

## GREY TABLE WARE FROM LATE ARCHAIC-EARLY CLASSICAL COMPLEXES OF THE CENTRAL QUARTER OF OLBIA PONTICA

Valentyna KRAPIVINA,

Nina LEJPUNSKAJA

**Keywords:** *grey table ware, Olbia, bowl, calyx, jug, beaker, pot, lekanis, lamp.*

**Abstract:** *The paper is devoted to the results of investigation of the grey table ware in Late Archaic – Early Classical complexes of the Central quarter of Olbia. These complexes are dugouts, semi-dugouts and pits. They all contain grey table ware, but it was only one and not the main part of the f table ware in Olbia. On the whole black-glazed vessels prevailed. Grey ceramics mostly imitated the forms of the black-glazed and painted pottery. It is represented by bowls, calyxes, jugs, oinochoai, beakers, pots, lekanides and their lids, lamps.*

Grey table ware is found in all centres of the North Black Sea littoral from the time of their appearance till the Late Antique period. Of course, the types of grey ceramics changed in the time and had peculiarities in every centre. There were also common features, characteristic for ancient Greek ceramics, but that could not be the base for the conclusion that the grey ceramics is the indicator of Greek ethnos<sup>1</sup>. As it is known the grey ware was characteristic for many cultures, in particular, it was the main group of the table ware for the population of Zarybinetskaja and Tchernjakhovskaja<sup>2</sup> cultures. Only the colour of ceramics scarcely could be the indicator of ethnos. For example, the problem is the appearance and chronology of wheel-made grey ware on the early Scythian settlements of the forest-steppe. Wheel-made grey vessels differ here in forms and clay from hand-made ones. They are represented mainly by the fragments of the table-ware pots with flask bottom and different kinds of rims, and the jugs. Even visual comparative analyses shows their differences with that ones from Classical states of the North-West Black sea littoral in Archaic period<sup>3</sup>. The assortment of grey ware in forest-steppe sites is rather poor, much poorer the same in the

---

<sup>1</sup> See: BUJSKIKH 2006, p. 31, 51-52.

<sup>2</sup> Sântana de Mureş in Romania.

<sup>3</sup> KRAPIVINA, DARAGAN 2008.

centers of the North-West Black Sea Littoral<sup>4</sup> or North-West Anatolia in the Late Bronze or Early Iron age<sup>5</sup>.

All that proved the necessity to continue the investigation of grey table ware in Classical states of the Black Sea littoral, especially of the early periods of their existence. Olbia Pontica is one of these centers. Probably ceramic production in it came into being rather soon after the city was settled down. Grey table ware in Olbia was mainly of local production, but some imports couldn't be excluded, especially for the initial period of its existence. The historiography of the question is given in the recent publication of S. B. Bujskikh<sup>6</sup> and does not need to be repeated. At least for the third quarter of the 6<sup>th</sup> century B.C. there are convincing proofs that own pottery existed in Olbia and Berezan settlement<sup>7</sup>.

In this paper we analyze of the quantity and the types of the grey table ware from Late Archaic – Early Classical complexes revealed in the Central quarter of Olbia. This quarter was situated to the south-west from agora, in Hellenistic period here the houses of rather rich citizens were built, which mainly destroyed the earlier buildings<sup>8</sup>. So there were revealed only nine complexes of Late Archaic – Early Classical time, which could be used for the investigation of their fillings. They are: two dugouts, four semi-dugouts and three pits. All dugouts and semi-dugouts could be dated in the frames of the third-fourth quarters of the 6<sup>th</sup> – the first half of the 5<sup>th</sup> centuries B.C.<sup>9</sup> (only one dugout is dated till the first quarter of 5<sup>th</sup> century B.C.). The pits are dated by the first half of the 5<sup>th</sup> century B.C., and one – even after the middle of the 5<sup>th</sup> century B.C.

The filling of all dugouts and semi-dugouts was the same, they all contained soft dark soil with ash, bones of domestic animals and fish and a lot of finds. Among the finds prevailed fragments of ceramics: amphorae formed 70-80 % of it, table ware – 15-20 %, kitchen ware – 1,5-6 %, handmade pottery – near 1 %. Besides there were bronze coins – „dolphins” (20-100 pieces), fragments of iron and bronze articles, sometimes beads, terracotta figurines, petit items of ceramics and bone, sheds with graffiti<sup>10</sup>.

Table ware was represented by black-glazed (prevailed), black-figured, painted and simple grey and red ceramics. In the archaic layers of Olbia and the settlements of its chora, plain table ware is mainly grey in color, as a rule polished and it is represented by numerous types of vessels. Red or light yellow vessels are not so numerous either in quantity, or in types; as a rule, they repeated some types of grey ones<sup>11</sup>.

*Semi-dugout 398* is dated by the third quarter of the 6<sup>th</sup> – the first half of the 5<sup>th</sup> centuries B.C. There were found 5 442 fragments of ceramics. Amphorae

<sup>4</sup> See: ALEXANDRESCU 1978; KRAPIVINA 1987, 2007; BUJSKIKH 2006.

<sup>5</sup> BAYNE 2000.

<sup>6</sup> BUJSKIKH 2006, p. 31-34.

<sup>7</sup> BUJSKIKH 2006, p. 32-33; KRAPIVINA 2007, p. 98.

<sup>8</sup> LEJPUNSKAJA 1986, p. 29.

<sup>9</sup> Not the second half of the 6<sup>th</sup> – the beginning of the 5<sup>th</sup> centuries B.C., as it was considered earlier. See: LEJPUNSKAJA 1986, p. 30.

<sup>10</sup> LEJPUNSKAJA 1986, p. 30-33.

<sup>11</sup> KRAPIVINA 1987, 79; 2007, 99.

formed 74 % of all ceramics. Table ware is represented by black-glazed (55,6 % of table ware), black-figured (3,7 %), painted (7,4 %) and simple grey (22,2 %) and red (11,1 %) ceramics<sup>12</sup>. Besides there were found 107 bronze „dolphins“, the iron blade and the fragment of iron helmet, the terracotta figurine of Cybela with lion on her knees of the 6<sup>th</sup> century B.C<sup>13</sup>.

Grey table ware is represented by usual types for that group of ceramics. They are:

1) two bowls of type 1<sup>14</sup> with ovoid body, incurved rim (diameters<sup>15</sup> of them are 21,2 cm and 12 cm), one on ring foot, another on flat underside;

2) deep calyx of type 1 with ovoid body, high outturned rim<sup>16</sup> (D – 18,5 cm) (**Fig. 1/1**);

3) jug of type 1 with high and rather wide cylindrical neck and ovoid body, with one handle, attached under the rim and on the body (D of the rim – 14,5 cm);

4) oinochoe of type 3 with short neck, trefoil mouth and ovoid body, with oval handle, attached on the rim and on the body, lifted under the rim (D – 9,6 cm);

5) beaker of type 1 with ovoid body (D – 10,5 cm), high outturned rim, strap handle attached on the rim and on the body and lifted under the rim, on ring foot.

*Dugout 400* is dated by the second half of the 6<sup>th</sup> – the first half of the 5<sup>th</sup> centuries B.C., but the materials of the last quarter of the 6<sup>th</sup> – the second quarter of the 5<sup>th</sup> centuries B.C. prevailed. Except of ceramics there were found 100 bronze „dolphins“, the head of a spear. Table ware is not so numerous as in the previous one. It is represented by black-glazed, black-figured (one calyx) and grey ceramics. To grey polished ceramics belong:

1) jug (or oinochoe) with cylindrical neck (D - 8,0 cm) and biconical body (D – 14,0 cm), oval handle, attached on the body and probably on the rim, on ring foot<sup>17</sup> (**Fig. 1/2**);

2) pot of type 1 with rounded body, short cylindrical neck, outturned horizontal rim (D – 8,0 cm), traces of handle, attached on the body (**Fig. 1/3**).

*Dugout 401* is excavated partly, could be dated by the end of the 6<sup>th</sup> – the 5<sup>th</sup> centuries B.C., but the materials of the end of the 6<sup>th</sup> – the first half of the 5<sup>th</sup> centuries B.C. prevailed. Table ware is represented by black-glazed, black-figured, red-figured, painted and grey ceramics. The grey polished ceramics is rather numerous:

1) deep dark grey well polished calyx of type 1 with ovoid body, high outturned rim (D – 17,5 cm)<sup>18</sup> (**Fig. 1/4**);

2) five bowls of type 1 with ovoid body, incurved rim of different shapes (D – 24,6 -29,5 cm), ring foot, sometimes with two holes under the rim for hanging

<sup>12</sup> The calculation of table ware is given according to pieces taken into collection.

<sup>13</sup> RUSJAEVA, LEJPUNSKAJA 1982, 39.

<sup>14</sup> The classification of ceramics here and further is given according to: KRPIVINA 2007, 100-105.

<sup>15</sup> Further –D.

<sup>16</sup> KRPIVINA 2007, fig. 8, 8.

<sup>17</sup> This type is absent in classification of V. Krapivina (KRPIVINA 2007).

<sup>18</sup> KRPIVINA 2007, fig. 8, 7.

with the help of lace (**Fig. 1/5-8**);

3) jug of type 3 with short cylindrical neck (D – 9,6 cm) and wide body, outturned rim and handle, attached on the rim and on the body, lifted under the rim;

4) pot of type 1 with rounded body, short cylindrical neck, outturned horizontal rim (D – 16,7 cm), strap handle, attached on the rim and on the body and two triangle projection of the rim on both sides of the handle (**Fig. 1/9**).

*Semi-dugout 214* is dated by the second half of the 6<sup>th</sup> – the first half of the 5<sup>th</sup> centuries B.C. There were found 3 674 fragments of ceramics. Amphorae formed 83,6 % of all ceramics. Table ware is represented by black-glazed, black-figured, painted and simple grey ceramics. Besides ceramics there were found 11 bronze „dolphins“, 1 „coin-arrow“, 5 heads of arrow, fragments of the vessel of Phoenician glass, item of bone.

Grey table ware is represented by domed lid, decorated by grooves, with rather wide horizontal rim and upturned flange, its diameter is 17,5 cm, probably, belonged to lekani<sup>19</sup> (**Fig. 2/1**).

*Semi-dugout 197* is dated by the second half of the 6<sup>th</sup> – the first half of the 5<sup>th</sup> centuries B.C. Except of ceramics there were found 40 bronze „dolphins“, 2 „coin-arrows“, bronze and bone heads of arrow, beards, two terracotta figurines of sited goddess of the end of the 6<sup>th</sup> – the beginning of the 5<sup>th</sup> centuries B.C.<sup>20</sup>, ceramic items. There are graffiti on some of black-glazed vessels and items. Table ware is represented by black-glazed, painted and grey ceramics. To grey polished ceramics belong:

1) bowl of type 1 with ovoid body, incurved rim of different shapes (D – 23,0 cm), two holes under the rim for hanging with the help of lace (**Fig. 2/2**);

2) lekani<sup>21</sup>, D of the rim is 18,0 cm (**Fig. 2/3**);

3) jug of type 2 with cylindrical neck and rounded body, with one double handle, attached on the rim (D – 12,8 cm) and on the body (**Fig. 2/4**);

4) three jugs of type 1 with high and wide cylindrical neck and large ovoid body, rim is slightly outturned and thickened (D – 13,0-13,5 cm) (**Fig. 2/5, 6**);

5) small round lamp with one nose (D – 5,5 cm, H – 2,3 cm).

*Semi-dugout 198* is dated by the third quarter of the 6<sup>th</sup> – the first half of the 5<sup>th</sup> centuries B.C. according to the material in the filling. At the same time its upper date could not be later the beginning of the 5<sup>th</sup> century B.C. as its south-eastern part was destroyed by the pit of that time. Table ware is represented by black-glazed, black-figured (fragments of 12 calyxes), painted, few simple grey and red ceramics. Besides ceramics, there were found 20 bronze „dolphins“, pieces of iron and bronze items. Table grey polished ceramics is represented by high leg of a bowl or calyx (**Fig. 2/7**).

*Pit 399* preserved on the depth of 2,4 m. The material of the filling is dated in wide frames of the middle of the 6<sup>th</sup> – the 5<sup>th</sup> centuries B.C. There were found 4 650 fragments of ceramics. Amphorae formed 82 % of all ceramics. Table ware is

<sup>19</sup> KRAPIVINA 2007, p. 105, fig. 8, 13.

<sup>20</sup> RUSJAEVA, LEJPUNSKAJA 1982.

<sup>21</sup> Very rare find.

represented by black-glazed (prevailed), black-figured, painted, simple grey and red (few) ceramics. Besides there were found „bronze dolphins”, metal items.

Grey table ware is represented by usual types for that group of ceramics. They are rather numerous:

1) five bowls of type 1 with ovoid body, incurved rim of different shapes (D – 17,0-32,50 cm), on ring foot (**Fig. 2/8, 9, 11**);

2) small bowl with curved rim, with one horizontal handle attached on the rim, it imitated Ionian bowls;

3) rim of the jug (D – 9,0 cm), probably of type 4;

5) two oinochoai of type 3 with short concave neck, trefoil mouth and ovoid body (D of the mouth – 9,0 and 11,0 cm) (**Fig. 3/1**);

6) three beakers of type 2 with biconical body, high outturned rim, strap handle attached on the rim and on the body and lifted under the rim, on ring foot (D of the rim – 9,8 cm, D of the body - 13,2 – 16,5 cm) (**Fig. 2/10; 3/2**);

7) two domed lids with rather wide horizontal rim and upturned flange, its diameter is 18,0 cm, probably, belonged to lekanis<sup>22</sup> (**Fig. 3/3**).

*Pit 421* preserved on the depth of 3,3 m. The material of the filling is dated in wide frames of the middle of the 6<sup>th</sup> – the 5<sup>th</sup> centuries B.C. There were found 2 475 fragments of ceramics. Table ware is represented by black-glazed, black-figured, simple grey and red ceramics.

Grey table ware is represented by:

1) three calyxes of type 2 with biconical body, high outturned rim (D – 16,2 – 16,4 cm), two horizontal handles (**Fig. 3/4, 5**);

2) two bowls of type 1 with ovoid body, incurved rim of different shapes (diameter – 15,0 and 23,0 cm), ring foot or flat underside (**Fig. 3/6, 7**);

3) bowl of type 3<sup>23</sup> with ovoid body, vertical upper wall and horizontal rim (D – 21,0 cm), on ring foot (**Fig. 3/8**), they are rare;

4) beaker of type 2 with biconical body, high outturned rim, strap handle attached on the rim and on the body and lifted under the rim, on ring foot (D of the rim – 10,0 cm, D of the body – 11 cm) (**Fig. 3/10**);

5) jug of type 2 with cylindrical neck and slightly outturned thickened (D – 8,2 cm) (**Fig. 3/9**);

6) double handle of a jug with ovoid body (**Fig. 3/11**);

7) lower part of a jug of type 8 with narrow neck and ovoid body (D – 13,8 cm), on ring foot (**Fig. 4/1**);

8) oinochoe of type 3 with short concave neck, trefoil mouth and ovoid body (D of the mouth – 8,7 cm) (**Fig. 4/2**);

9) round lamp with one nose (D – 11,5 cm, H – 2,3 cm), imitation of Ionian type (**Fig. 4/3**).

*Pit 211* preserved on the depth of 2,65 m. It cut the semi-dugout 198. The material of the filling is dated in wide frames of the middle of the 6<sup>th</sup> – the first half of the 5<sup>th</sup> centuries B.C. Though it was erected not later the beginning of the 5<sup>th</sup> century B.C. There were found 3 584 fragments of ceramics. Besides there were

<sup>22</sup> KRAPIVINA 2007, p. 105, fig. 8, 13.

<sup>23</sup> KRAPIVINA 2007, p. 103, fig. 8, 2.

found bronze „dolphins“, bronze heads of arrow, terracotta figurines of sited monkey of local production of the 5<sup>th</sup> centuries B.C.<sup>24</sup>. Table ware is represented by black-glazed, black-figured, painted, simple grey and red ceramics.

Grey table ware is represented by the upper part of the jug of type 7<sup>25</sup> with high cylindrical neck, outturned and thickened rim (D – 15,6 cm) and two oval in section handles, attached under the rim and on the body, it imitated table ware amphorae (Fig. 4/4).

Thus we could state that grey table ware was only one and not the main part of the table ware in Olbia Pontica in the Late Archaic – Early Classical time. Vessels of grey clay, very often polished, mostly imitated the forms of the black-glazed and painted pottery. In everyday life there were used grey bowls, calyxes, beakers, jugs, oinochoai, more rare pots, lekanidas, lamps.

### BIBLIOGRAPHY

ALEXANDRESCU 1978 - P. Alexandrescu, *Histria IV, La céramique d'époque archaïque et classique (VII-IVe s.)*, București-Paris, 1978.

BUJSKIKH 2006 – S. B. Bujskikh, *Grey Ceramics as Ethno-indicator of Greek Population in the Lower Bug Region in the 6<sup>th</sup> – 1<sup>st</sup> Centuries BC*, *Bosporos Studies* 11, Simferopol-Kerch (2006), 29-57.

KRAPIVINA 1987 - V.V. Krapivina, *Plain Tableware*, in *The Culture of the Population of Olbia and its Vicinities in Archaic Time*, Kiev, 1987, p. 71-79 (in Russian).

KRAPIVINA 2007 - V.V. Krapivina, *Grey Ceramics of Olbia of the VI<sup>th</sup> – V<sup>th</sup> Centuries B.C.*, *Arheology* 1 (2007), 98-106 (in Ukrainian).

KRAPIVINA, DARAGAN, 2008 – V. Krapivina, M. Daragan *The Problems of Comparative Analyses of Grey Ware from Forest-Steppe and Classical State of the North-West Black Sea Littoral in Early Iron Age*, in *Pontic Grey Wares. International Conference, Bucarest-Constanza 30/09 – 03/10/2008. Bucarest-Constanza (2008)*.

LEJPUNSKAJA 1986 – N.A. Lejpunskaja, *Residential District of Olbia to the South-West from Agora (1972-1977 years)*, in *Olbia and its Vicinities*, Kiev, 1986, p. 29-47 (in Russian).

RUSJAEVA, LEJPUNSKAJA 1982 – A.S. Rusjaeva, N.A. Lejpunskaja, *The Group of Terracotta Figurines from Olbia*, in *New Monuments of Ancient and Medieval Fine Art*, Kiev, 1982, p. 58-77 (in Russian).

<sup>24</sup> RUSJAEVA, LEJPUNSKAJA 1982, p. 63.

<sup>25</sup> KRAPIVINA 2007, fig. 4, 3.

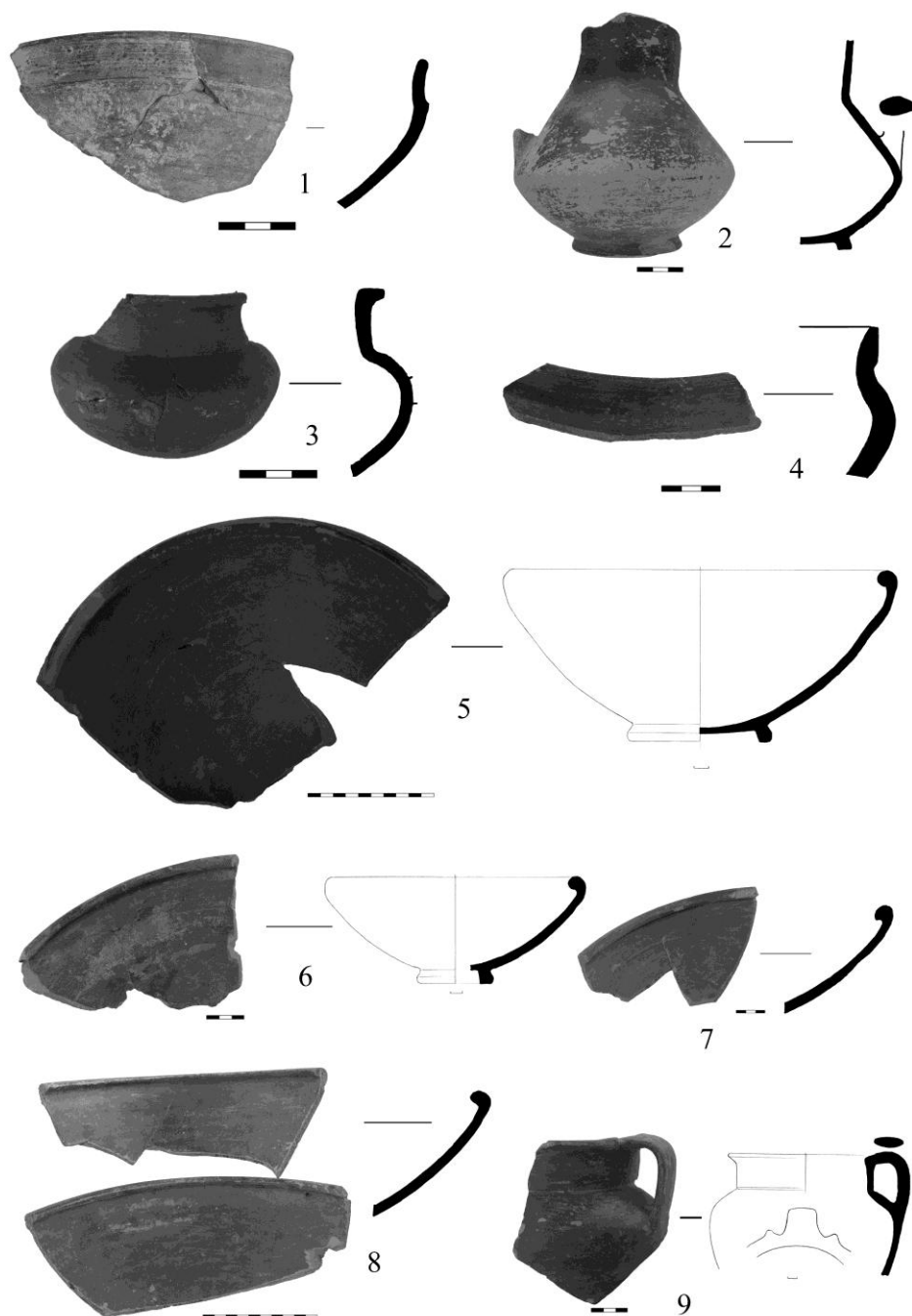


Fig. 1 - Grey table ware from Olbia: 1 - semi-dugout 398, calyx of type 1; 2, 3 - dugout 400: 2 - jug (or oinochoe) with cylindrical neck; 3 - pot of type 1; 4-9 dugout 401: 4 - calyx of type 1; 5-8 - bowls of type 1; 9 - pot of type 1.

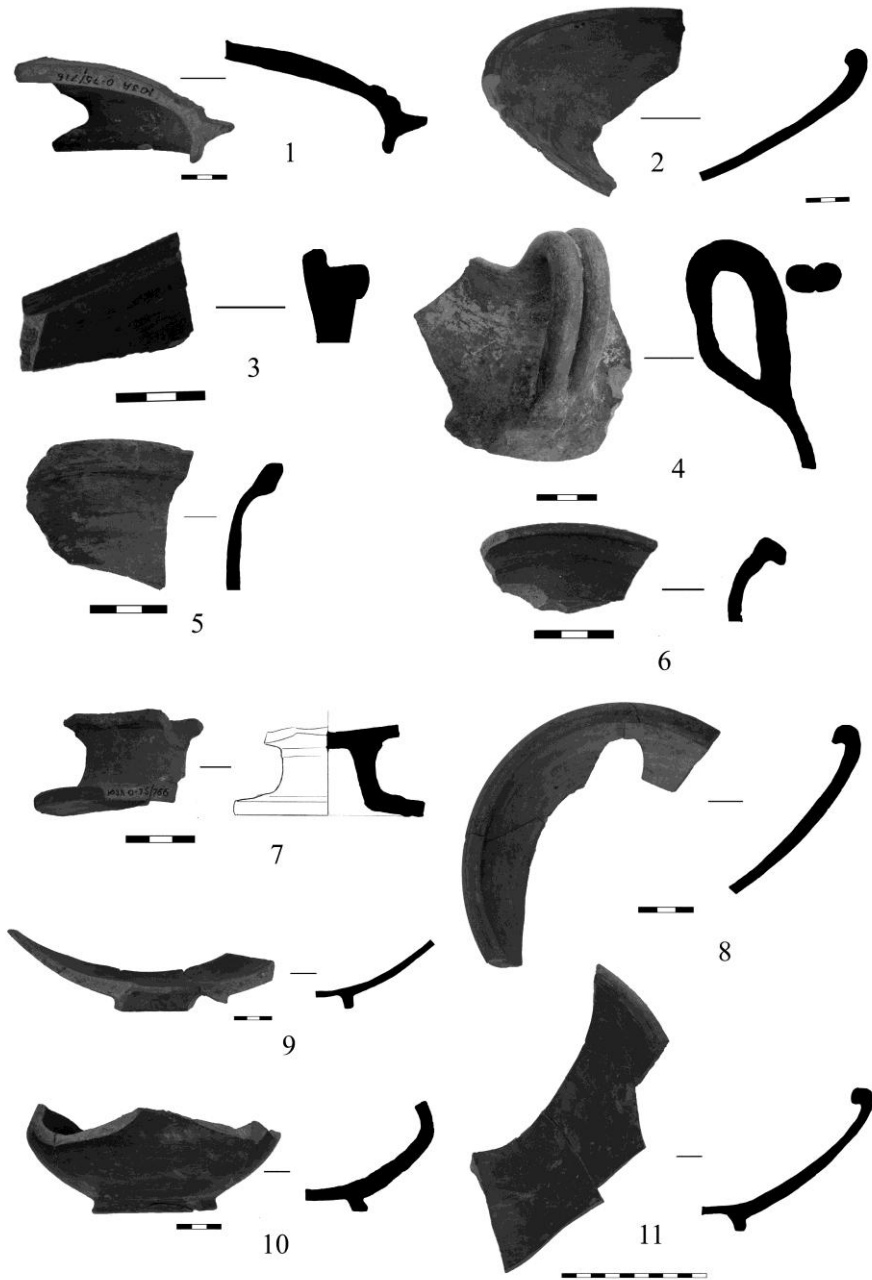


Fig. 2 - Grey table ware from Olbia: 1 - semi-dugout 214, lid of lekane; 2-6 - semi-dugout 197: 2 - bowl of type 1; 3 - lekane; 4 - jug of type 2; 5, 6 - jugs of type 1; 7 - semi-dugout 198, high leg of a bowl or calyx; 8 - 11 - pit 399: 8, 9, 11 - bowls of type 1; 10 - beaker of type 2.

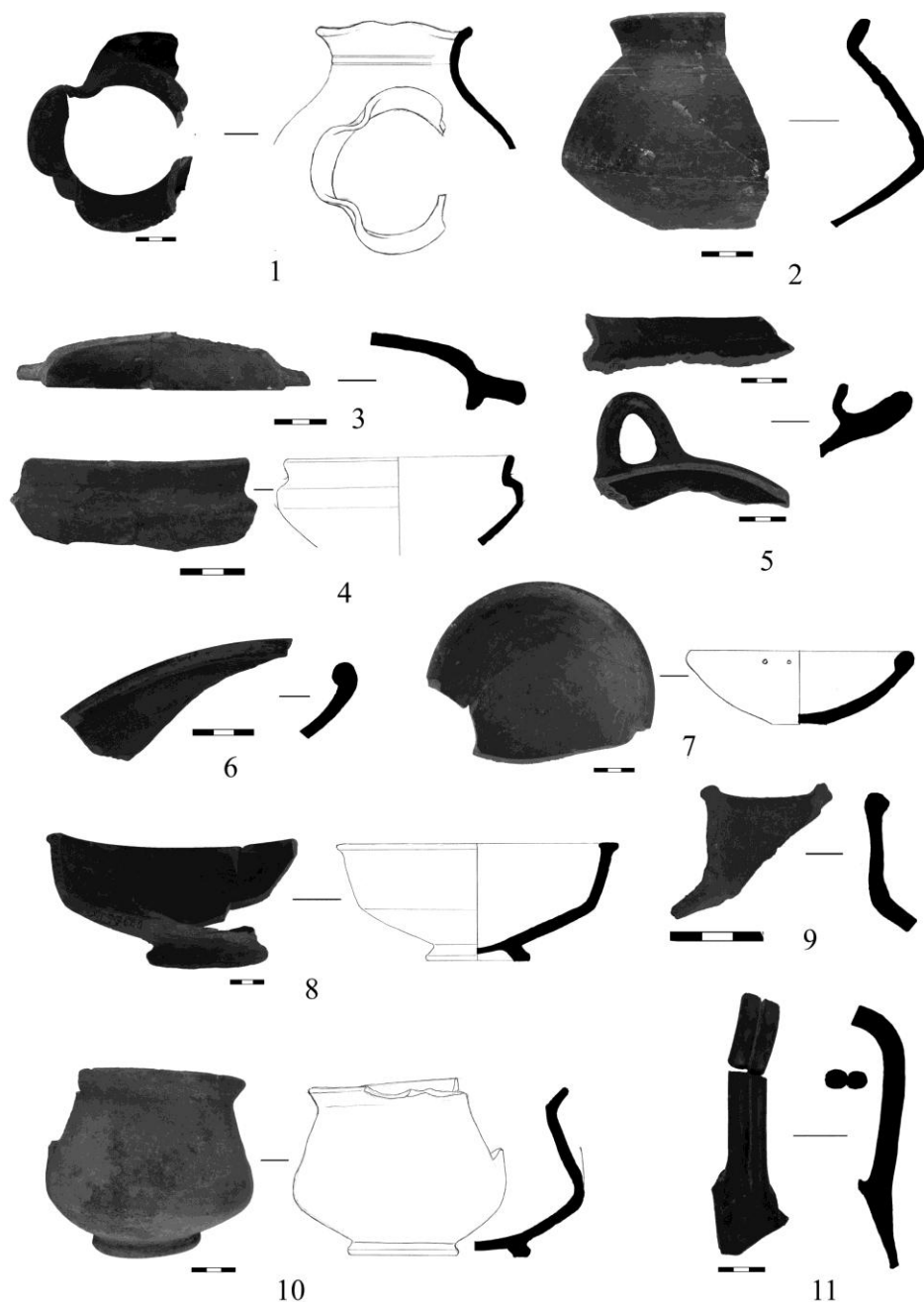


Fig. 3 - Grey table ware from Olbia: 1- 3 - pit 399: 1- oinochoe of type 3; 2 - beaker of type 2; 3 - lid of lekanis; 4 - 11 - pit 421: 4, 5 - calyxes of type 2; 6, 7 - bowls of type 1; 8 - bowl of type 3; 9 - jug of type 2; 10 - beaker of type 2; 11 - double handle of a jug.

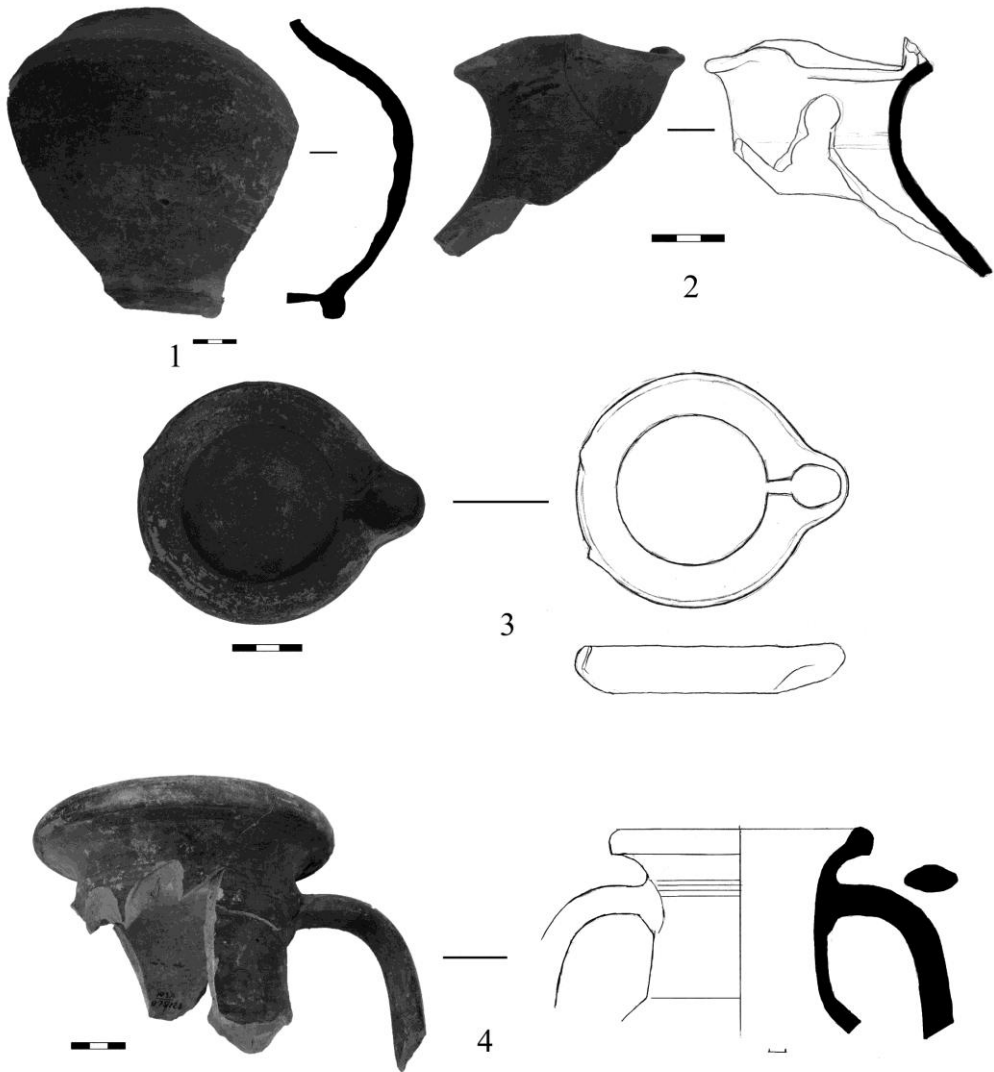


Fig. 4. Grey table ware from Olbia: 1-3 – pit 421: 1 - jug of type 8; 2 - oinochoe of type 3; 3 – lamp; 4 – pit 211, jug of type 7 (table amphora).