

CLOTHING ACCESSORIES ORNAMENTS FOUND IN DOBRUDJA

Cristina PARASCHIV-TALMAȚCHI*
Gabriel CUSTUREA**

Keywords: *belt ornaments, strap ends, migration period, Early Middle Ages, Dobrudja.*

Cuvinte-cheie: *ornamente de curea, capete de curea, perioada migrațiilor, evul mediu timpuriu, Dobrogea.*

Abstract: *The authors present 16 unpublished belt ornaments located in the collection of the Museum for National History and Archaeology in Constanța. Their approach was prompted by the finding of a relatively small number of such pieces among published materials for the migration period and the Early Middle Ages in Dobrudja, thus creating an unrealistic image for this territory. The 16 strap ends were placed chronologically, at least temporarily, relative for some of them, based on some analogies with identical or similar pieces as decorative style, technique or other features. Thus, five of these are from the 6th – 7th centuries, the others belonging to the 9th – 11th centuries.*

Rezumat: *Autorii prezintă 16 ornamente de centură inedite aflate în colecția Muzeului de Istorie Națională și Arheologie din Constanța. Acest demers a fost determinat de constatarea, pentru perioada migrațiilor și a evului mediu timpuriu în Dobrogea, a prezenței unui număr relativ redus de astfel de piese în materialele editate, ceea ce crea o imagine nerealistă pentru teritoriul respectiv. Cele 16 capete de curea au fost încadrate cronologic prin analogie cu piese identice sau asemănătoare ca stil decorativ, tehnică sau alte caracteristici; aceasta face ca datarea propusă să fie pentru unele dintre ele, cel puțin momentan, relativă. Astfel, cinci dintre piese sunt din secolele VI – VII, celelalte aparținând veacurilor IX – XI.*

Over time, people have felt the need to make changes to both its clothing and accessories, thus creating currents, trends for a specific period, chronologically well placed. Cloaks, tunics, dresses have often been put in value by the

* Cristina Paraschiv-Talmațchi: Muzeul de Istorie Națională și Arheologie, Piața Ovidiu nr. 12, Constanța, 900745; e-mail: talmatchi@gmail.com.

** Gabriel Custurea: Muzeul de Istorie Națională și Arheologie, Piața Ovidiu nr. 12, Constanța, 900745; e-mail: custurea@gmail.com.

accessories that complement them (brooches, rings, earrings etc.), complete them (appliqués), or hold various components (belts and straps). These accessories were present in all social layers, the difference being given by the material they were made of, the size, the neat character shown in the manufacture of the item, in other words its final value. The accessories entered also in the army clothing, some with decorative purpose, others bearing a message, signaling a flag bearer, member of a unit or with a deeply emotional role, the noise made by them provoking fear to the adversary etc.

However, we find that there are areas where such findings are not too many, and for some periods are very rare, not exceeding ten to twenty copies. Such a situation was found for the migration period and the Early Middle Ages in Dobrudja, our study aiming a completion of the current situation, by putting 16 unpublished belt ornaments in scientific circuit, which are in the collection of the Museum for National History and Archaeology in Constanța.

Catalogue

1. Rectangular strap end, with a rounded end. On the obverse the piece was ornamented with incisions arranged in „V” at the bottom, respectively with phytomorphic motif. On the reverse there is no decoration present (Pl. 2/1, 4/1). Place of discovery: Dobrudja *passim*; bronze; fragmentary; L = 1.9 cm; l = 1.1 cm; thickness = 0.15 cm; MNHAC* collection, inv. 46640.

2. Rectangular openwork strap end, with a rounded end. It was decorated with an incised line, placed towards the lower right side and five holes of different sizes. On the reverse two mounting ears are preserved (Pl. 2/2, 4/2). Place of discovery: Tufani (Constanța county); bronze; L = 2.69 cm; l = 1.46 cm; thickness = 0.24 cm; MNHAC collection, inv. 42996.

3. Rectangular openwork strap end, with rounded tip. It presents eight perforations of different sizes and shapes on each side (Pl. 2/3, 4/3). Place of discovery: Dobrudja *passim*; bronze; L = 2.52 cm; l = 1.6 cm; thickness = 0.43 cm; MNHAC collection, inv. 46641.

4. Rectangular strap end, with rounded tip. On the obverse it is decorated with an incised motif, tamga style, and the reverse is straight. It presents a hole to the right end, centrally (Pl. 2/4, 4/4). Place of discovery: Dobrudja *passim*; bronze; L = 3.82 cm; l = 0.95 cm; thickness = 0.45 cm; MNHAC collection, inv. 44433.

5. Rectangular strap end, with rounded tip. Both sides of the piece are straight, without decoration (Pl. 2/5, 4/5). Place of discovery: Cochirleni (Constanța county); bronze; fragmentary; L = 2.65 cm; l = 1.53 cm; thickness = 0.23 cm; MNHAC collection, inv. 42195.

6. Rectangular strap end, with a rounded end. The obverse side was decorated with embossed phytomorphic motifs, framed by a border consisting of a straight line and a granulated one. Two of the holding pins are preserved (Pl. 2/6, 4/6). Place of discovery: Tufani (Constanța county); bronze; L = 3.35 cm; l = 1.25 cm; thickness = 0.18 cm; MNHAC collection, inv. 42239.

* Museum for National History and Archaeology Constanța.

7. Rectangular strap end, with a sharper end. Its obverse was decorated with embossed heart-shaped motifs, held together and framed in a box located at the edge of the piece. On the reverse, one of the mounting rivets and the trace of the second one is preserved (Pl. 2/7, 4/7). Place of discovery: Dobrudja *passim*; bronze; fragmentary (two pieces); L = 3.5 cm; l = 1.33 cm; thickness = 0.15 cm; MNHAC collection, inv. 44494.

8. Strap end with simple rectangular body, with a small protuberance in the middle of the preserved end. It does not present any decoration. On the reverse three mounting rivets are preserved (Pl. 2/8, 4/8). Place of discovery: Târgușor, „Ester” point (Constanța county); bronze; fragmentary; L = 3.69 cm; l = 1.4 cm; thickness = 0.16 cm; MNHAC collection, inv. 46603.

9. Rectangular strap end, with a rounded end and a triangle shaped one, fretted inside, towards the piece. Its obverse was decorated with two straight lines arranged longitudinally and a broken one, which follows the piece edges, all incised. Two mounting rivets are preserved on the reverse; where the third one was placed, there is a perforation now (Pl. 2/9). Place of discovery: Târgușor (Constanța county); bronze; L = 4.16 cm; l = 1.45 cm; thickness = 0.2 cm; MNHAC collection, inv. 41267.

10. Rectangular strap end, with a rounded end and a fretted one towards the piece. Incised phytomorphic motifs are present on the obverse, placed in a frame serrated outwards. Four mounting nails are preserved on the reverse and in the fretted side corners it has two perforations (Pl. 3/10, 4/10). Place of discovery: Dobrudja *passim*; bronze; L = 4.38 cm; l = 1.44 cm; thickness = 0.15 cm; MNHAC collection, inv. 42247.

11. Rectangular strap end, with a rounded end and a fretted one towards the piece. On obverse it shows weakly incised geometric motifs, symmetrically placed in a frame. On the reverse it retains a mounting rivet. It has two perforations (Pl. 3/11, 5/11). Place of discovery: Dobrudja *passim*; bronze; L = 2.63 cm; l = 1.25 cm; thickness = 0.13 cm; NMHAC collection, inv. 44493.

12. Rectangular strap end, with a sharper end. On the obverse it shows phytomorphic embossed motifs, placed in a frame consisting of two embossed lines, which also outlines the edges of the piece. On the reverse it preserves three of the rivets mounting, two of them with mounting plates (Pl. 3/12, 5/12). Place of discovery: Dobrudja *passim*; bronze; fragmentary (two pieces); L = 4.94 cm; l = 1.95 cm; thickness = 0.2 cm; MNHAC collection, inv. 46606.

13. Rectangular strap end, with a rounded end. Both sides of the piece were decorated with embossed motifs, „palm” type, arranged longitudinally. The right end of the piece, the one from the belt, also preserves elements of the mounting strap (Pl. 3/13, 5/13). Place of discovery: Dobrudja *passim*; bronze; L = 4.27 cm; l = 2 cm; thickness = 0.3 cm; MNHAC collection, inv. 44492.

14. Rectangular strap end, with a rounded end and a fretted one towards the piece with a protuberance in the center. On the obverse it has phytomorphic motifs placed in a frame, which also outlines the edges of the piece, all embossed. Three of the clamping rivets that have mounting plates are preserved on the reverse (Pl. 3/14). Place of discovery: Târgușor (Constanța county); bronze; L = 3.92 cm; l = 1.2 cm; thickness = 0.18 cm; MNHAC collection, inv. 41266.

15. Rectangular strap end, with one end slightly fretted towards the piece. Its obverse presents embossed phytomorphic and geometrical motives, and the edges of the piece are shaped by an embossed frame. On the reverse it preserves three of the mounting rivets (Pl. 3/15, 5/15). Place of discovery: Tufani (Constanța county); bronze; fragmentary; L = 3 cm; l = 1.05 cm; thickness = 0.17 cm; MNHAC collection, inv. 42237.

16. Rectangular strap end, which presents on the obverse embossed phytomorphic motifs, framed by a border. On the reverse it preserves three of the mounting rivets, two of them with mounting plates (Pl. 3/16, 5/16). Place of discovery: Valu lui Traian, „SMA” point (Constanța county); bronze; fragmentary; L = 2.94 cm; l = 1.36 cm; thickness = 0.2 cm; MNHAC collection, inv. 46642.

Comments

As we know, these pieces were used for gaskets straps hanging from belts, both with counterweight role, the strap remaining stretched, as well as decoration, bringing an aesthetic plus of a practical fashion accessory. These were fixed on top of these gaskets straps, the mounting process consisting in mounting rivets plates, thin nails were then bent or the tip of the belt was inserted inside the piece, when it allowed, and then fastened with a rivet or by easily pressing the piece. Another method was the one used for item no. 13, with rectangular frame through which the bent strap end was introduced and then fastened with a rivet or perhaps an appliqué.

Strap ends could be produced by the following processes: casting, cold pressing and welding of various components¹. Almost all the presented pieces were made by casting.

As it can be seen, for only half of them we know the place of discovery, the others are coming from the Istro-Pontic territory (Dobrudja *passim*).

The lack of more complete data concerning the context of their discovery determines us to resort to chronological classification of similar pieces which appeared in well-dated contexts or for which more concluding information was used. In their absence, at some pieces we referred to production technique, shape and decoration. Under these circumstances, the chronology proposed by us will be, at least temporarily, relative.

We haven't identified an identical item in the consulted specialty literature for the strap end at the first position in the catalogue. The closest analogy and also the only one, concerning the scene, we can establish with a silver gilt strap end found in Florești (Cluj county)². It has been dated to the early 6th century AD and comes from the tomb of a warrior³.

We have analogies at Pietra Frecăței (Tulcea county)⁴ for the piece no. 2. In the inventory of a tomb six strap ends were reported there, all openwork, five of them approaching the appearance of the one discovered at Tufani, except that they have only three holes. The pieces from there have been dated initially in the

¹ DASKALOV 2012, p. 164.

² Gepizii 2011, p. 110-111, nr. 36.

³ OPREANU, VOIȘIAN, BOTA 2007, p. 511, 518, pl. 2.

⁴ PETRE 1962, p. 582, 583, fig. 20/16-20.

6th – 7th centuries; the author subsequently returned upon the date by opting for the 7th century AD⁵. Another piece, dated late 6th century - beginning of the 7th century, comes from a tomb discovered at Tomis (Constanța)⁶. We mention other analogies in Bulgaria, at Veliki Preslav⁷ (6th - 7th centuries)⁸ and a piece comes from North-East Bulgaria (second half of the 6th century - the first decades of the 7th century)⁹.

At no. 3 in the catalogue we have also an openwork strap end, but it is rectangular in and hollow inside the section. Its decoration, with eight holes on each side, is approaching as ornamental style to the last piece discovered at (L)Ibida (Slava Rusă, Tulcea county¹⁰), except that the last one has mounting ears and the decoration is slightly different (the 6th century AD¹¹). The strap end from Goleš (Silistra region, Bulgaria¹²), also with mounting ears, is dated to the second half of the 6th century - the first decades of the 7th century¹³. Instead, the one from Dragoevo (Šumen region, Bulgaria¹⁴), framed chronologically as the last piece, is rectangular in section and hollow inside.

Strap end no. 4 in the catalogue, with incised tamga style ornament, has the closest analogies in southeastern Bulgaria, in Kiten (Varna region¹⁵) and in Dobrich¹⁶. There are two almost identical pieces, as decoration and dimensions, which have been dated to the second half of the 6th century - the first decades of the 7th century¹⁷. Pieces of the same type were found in Bulgaria and in other points¹⁸, but different in decoration and size.

From Cochirleni comes one fragmentary strap end, being made by welding components. A similar, almost complete piece comes from Cheșereu (Bihar county)¹⁹, and another is part of a gasket belt discovered in Crimea²⁰. The first is of lead and comes from inhumation graves dated to the period 670-720. The second one was also discovered in a necropolis and dated to the 6th – 7th centuries.

Item no. 6 from the catalogue has analogies in Bulgaria (Varna²¹ and Pliska²² museum collections), Hungary (from Kisköre) and Slovakia (in Nové Zámky)²³. The earliest dating for this type of strap end is 8th – 9th centuries, but it can also be

⁵ PETRE 1987, p. 71, pl. 130 bis/207e.

⁶ BUCOVALĂ, PAȘCA 1992, p. 249, 254, pl. 6/M.21-inv.38476.

⁷ VITLYANOV 2007, p. 257, pl. 2/23-25.

⁸ VITLYANOV 2007, p. 249.

⁹ DASKALOV 2012, p. 75, 165, 245, fig. 75/10.

¹⁰ OPAIȚ 1991, p. 46, fig. 18/56.

¹¹ OPAIȚ 1991, p. 47.

¹² DASKALOV 2012, p. 76, 245, fig. 75/23.

¹³ DASKALOV 2012, p. 165.

¹⁴ DASKALOV 2012, p. 75, 165, 245, fig. 75/4.

¹⁵ DASKALOV 2012, p. 245, fig. 73/8.

¹⁶ DONCHEVA 2007, p. 160, fig. 23; DASKALOV 2012, p. 245, fig. 73/5.

¹⁷ DASKALOV 2012, p. 165.

¹⁸ DONCHEVA 2007, p. 160, fig. 21, 22 and 24; DASKALOV 2012, p. 243, fig. 73.

¹⁹ COSMA 2002, p. 184, 420, pl. 83/6.

²⁰ DASKALOV 2012, p. 162, 191, fig. 21/2.

²¹ PLETNJOV, PAVLOVA 1992, pl. IX/71, 72.

²² PLETNJOV, PAVLOVA 1992, p. 181.

²³ PLETNJOV, PAVLOVA 1992, p. 181.

met later, in the 10th century AD.²⁴

An almost identical piece, as shape and decoration, with copy no. 7 of the catalogue exists in Bulgaria, at the museum in Varna²⁵. It was dated to the 9th – 10th century.

The next two pieces were discovered in Târgușor area. First, no. 8 in the catalogue, undecorated, has analogies in Bulgaria, in the Varna museum collection, where the two strap ends come from Slavejkovo and Kiten²⁶ (with the observation that the second one has the end with a protuberance, fretted to the inside of the piece). These have been assigned chronologically to the 9th – 10th centuries, based on similar pieces in museum collections in Silistra and Dobrich²⁷. Another piece, from Veliki Preslav, received a wider classification, from the 9th century until the middle of the 11th century²⁸.

The second one, no. 9 in the catalogue, has a linear decoration and a similar shape with a piece that is in the collection of Varna museum²⁹, except that this one has a embossed decoration. It was dated by analogy with similar pieces in museum collections from Dobrich and Veliko Tjrnovo, to the 9th – 10th centuries.

Item no. 10 of the catalogue also has analogies in Bulgaria. Some strap ends were found at Odjrci, among them being one similar in shape and decoration with our piece³⁰. It was dated to the 9th – 10th centuries³¹. Some similarities, regarding the decoration, can be observed with the bronze strap end found on the Danube riverbank, near Noviodunum (Isaccea, Tulcea county)³².

For the strap end described at no. 11 in the catalogue, the closest analogy, regarding somehow the decoration, can be established it with a piece discovered at Veliki Preslav³³, dated to the 9th century - middle of the 11th century.

The largest piece in our catalogue, located at no. 12, is unfortunately fragmentary. It draws attention not only by its size, but also by the decoration composition and how neatly it was crafted. Coming from somewhere in Dobrudja, the piece shows some analogies with a copy located in Varna³⁴ museum collection, dated to the 9th century - beginning of the 11th century. A similar piece was discovered in Bulgaria, at Pliska³⁵.

For the next piece, no. 13 in the catalogue, we can identify analogies even in Dobrudja. These are two unforeseeably discovered lead strap ends³⁶, for which analogies were found in Ukraine and Russia and placed chronologically in the 9th

²⁴ PLETNJOV, PAVLOVA 1992, p. 181.

²⁵ PLETNJOV, PAVLOVA 1992, p. 176, 200, pl. VI/49, 213.

²⁶ PLETNJOV, PAVLOVA 1992, p. 197, pl. III/19, 20.

²⁷ PLETNJOV, PAVLOVA 1992, p. 169-170.

²⁸ STANILOV 1995, p. 123, 124, fig. 89, 134.

²⁹ PLETNJOV, PAVLOVA 1992, p. 176, 200, pl. 50, 213.

³⁰ DONCHEVA-PETKOVA, NINOV, PARUŠEV 1999, p. 164, pl. LI/695.

³¹ DONCHEVA-PETKOVA, NINOV, PARUŠEV 1999, p. 107.

³² BARNEA, MITREA, ANGHELESCU 1957, p. 167, 170, fig. 16/7.

³³ STANILOV 1995, p. 125, fig. 9/104, 126, 135.

³⁴ PLETNJOV, PAVLOVA 1992, p. 183, 204, pl. X/79, 217.

³⁵ PLETNEVA 1992, p. 61, fig. 32.

³⁶ BILAVSCHI, MATEI 2007, p. 324, 325, fig. 1/ 2, 3.

– 11th centuries³⁷. Other copies are in Bulgaria, at Pliska³⁸ and in the museum collection in Šumen, which are dated to the second third of the 9th century A.D.³⁹ It should be noted that all these have decorations, sometimes also dimensions, different from the one on our piece, with interrupted lines or placed in network.

From Târgușor comes a third piece, no. 14 in the catalogue, for which we have analogies at Dinogetia (Garvăn, Tulcea county)⁴⁰, a copy from the 10th – 11th centuries⁴¹, and in Bulgaria at Preslav (9th – 11th century)⁴² and Skala⁴³ (located in the museum collection of Silistra and dated to the 10th – 11th centuries⁴⁴).

For the piece no. 15 in the catalogue we could not find any analogies. But by shape, working technique and scenery, we consider, with the necessary reserves, that it can be framed in the 9th – 11th centuries. It comes from Tufani, from where we already have a piece from the 6th – 7th centuries, but also one from the 8th – 9/10th centuries, presented in the catalogue. Unlike the others, it shows special crafting care, which may suggest a specialized craftsman or a person of a higher social class who wore it.

The last piece in the catalogue, no. 16, was discovered at Valu lui Traian, not far from Constanța. The closest analogy for it we have in the North-Pontic steppe and it is widely dated to the 9th – 11th centuries⁴⁵.

As can be seen, the pieces were put in the catalogue chronologically, not by place of discovery. In spite of the observation, made earlier, that the proposed chronology remains largely relative (as long as there is no benefit from clear archaeological contexts of discovery), we find that, based on analogies, we have five pieces from the 6th – 7th centuries, the others belonging to the 9th – 11th centuries.

As places of discovery, one comes from Cochirleni, three from Târgușor, three from Tufani and one from Valu lui Traian, the others being, as noted above, from the Istro-Pontic territory.

We do not consider the occurrence of the piece from Cochirleni (6th – 7th centuries) as a chance finding. It can come from the perimeter of the late Roman settlements (4th – 6th centuries), identified since the last century in the village area⁴⁶. On the same occasion a few other settlements have been reported from the Early Middle Ages⁴⁷.

Two settlements from the 9th – 10th centuries⁴⁸ were not long ago reported in the perimeter of Târgușor village. They join two other known points, one of them being near the old town of Ester⁴⁹.

³⁷ BILAVSCHI, MATEI 2007, p. 325, n. 7.

³⁸ RAȘEV 2008, p. 441, 524, pl. LXXI/1-3.

³⁹ STANILOV 2006, p. 180, 181, fig. 9/3-5.

⁴⁰ ȘTEFAN, BARNEA, COMȘA, COMȘA 1967, p. 295, fig. 173/25.

⁴¹ ȘTEFAN, BARNEA, COMȘA, COMȘA 1967, p. 299.

⁴² SHTEREVA, MELAMED, GORYANOVA, PAZVANTOVA 1994, p. 39, no. 102.

⁴³ YOTOV, ATANASOV 1998, p. 164, 315, pl. CXVI/477.

⁴⁴ YOTOV, ATANASOV 1998, p. 110.

⁴⁵ GOLUBEVA, MOGILJNIKOV, SEDOV, ROZENFELJDT 1987, p. 198, 329, pl. LXXXI/15.

⁴⁶ HAȘOTTI, MIHAIL 1983, p. 285-294.

⁴⁷ CUSTUREA 2000, p. 31.

⁴⁸ PARASCHIV-TALMAȚCHI 2010, p. 288-292.

⁴⁹ CUSTUREA 2000, p. 38.

From Tufani we mention a coin from Basil II - Constantine VIII⁵⁰ and a reliquary cross of the 10th century - beginning of 11th century⁵¹.

From Valu lui Traian, point „SMA” (Agricultural machines unit), comes a reliquary cross⁵². Moreover, in several locations within the village, early medieval materials⁵³ were reported and more recently, south of this point, a large settlement, from the 9th century - beginning of the 11th century was investigated during the construction of the Bucharest-Constanța highway.

Thus we found that, for the areas of origin, strap ends are not singular discoveries of the period in which they can be classified, the contemporary artifacts are supporting the proposed dating.

Almost without reservation, experts have attributed this type strap ends to the migratory peoples coming from the North-Pontic territory or to their influence⁵⁴. In fact, the largest and most spectacular of such discoveries are coming from their tombs.

In conclusion, making a retrospective, we remind that strap ends of the 6th - 7th centuries have been reported on Dobrudjan territory (Pl. 1), at Capidava, Cochirleni, Tomis-Constanța, Mangalia-Callatis⁵⁵ (Pl. 6/8-9), Piatra Frecăței (Pl. 6/10-15), Slava Rusă-(L)Ibida and Tufani, and of the 9th - 11th centuries at Garvăn-Dinogetia (Pl. 6/1-4), Isaccea-Noviodunum (Pl. 6/5), Istria⁵⁶ (Pl. 6/7), Păcuiul lui Soare⁵⁷ (Pl. 6/6), Târgușor, Tufani and Valu lui Traian. Findings of a relatively small number of such pieces in published materials, has led us to put the 16 specimens from the museum collection in Constanța into scientific circulation, trying to give an image of the Istro-Pontic territory closer to the actual one, from this point of view. However, we hope that our approach will materialize as a necessary and useful study to archaeologists, with contribution to clarifying some aspects of Dobrudjan history in those periods.

BIBLIOGRAPHY

BARNEA, MITREA, ANGHELESCU 1957 – Ion Barnea, Bucur Mitrea, Niță Anghelescu, *Săpăturile de salvare de la Noviodunum*, Materiale 4 (1957), p. 155 – 174.

BILAVSCHI, MATEI 2007 – George Bilavschi, Ionel Matei, *Accesorii din metal descoperite în Dobrogea, provenite dintr-o colecție particulară*, ArhMold 30 (2007), p. 323 – 327.

BUCOVALĂ, PAȘCA 1992 – Mihai Bucovală, Cecilia Pașca, *Cercetări în necropola romană de vest a Tomisului* (1992), Pontica 25 (1992), p. 241 – 272.

COSMA 2002 – Călin Cosma, *Vestul și nord-vestul României în secolele VIII – X d.H.*, Cluj-Napoca, 2002.

CUSTUREA 1999 – Gabriel Custurea, *Câteva cruci relicvar descoperite în Dobrogea*, Pontica 32 (1999), p. 303-304.

⁵⁰ CUSTUREA 2000, p. 155.

⁵¹ CUSTUREA, PARASCHIV-TALMAȚCHI 2011, p. 136, 141.

⁵² CUSTUREA, PARASCHIV-TALMAȚCHI 2011, p. 136.

⁵³ MĂNUCU-ADAMEȘTEANU 1992, 349-350; CUSTUREA 1999, p. 303-304.

⁵⁴ ȘTEFAN, BARNEA, COMȘA, COMȘA 1967, p. 299-300; TEODOR 2003, p. 497; DASKALOV 2012, p. 166-167.

⁵⁵ PREDA 1980, p. 150, pl. XVI, 164, pl. XXXIV.

⁵⁶ ZIRRA 1963, p. 393, fig. 29/10.

⁵⁷ DIACONU, VÎLCEANU 1972, p. 154, 156, fig. 63/1.

CUSTUREA 2000 – Gabriel Custurea, *Circulația monedei bizantine în Dobrogea (sec. IX – XI)*, Constanța, 2000.

CUSTUREA, PARASCHIV-TALMAȚCHI 2011 – Gabriel Custurea, Cristina Paraschiv-Talmațchi, *Small Crosses from the Byzantine Period Discovered on the Danube-Pontic Territory*, ЕВРВ 6 (2011), p. 7 – 21.

DASCALOV 2012 – Методи Даскалов, *Колани и коланни украси от VI – VII век (от днешна България и съседните земи)*, София, 2012.

DIACONU, VÎLCEANU 1972 – Petre Diaconu, Dumitru Vîlceanu, *Păciuil lui Soare. Cetatea bizantină*, vol. I, București, 1972.

DONCHEVA 2007 – Стеда Дончева, *Нови накити тип Мартиновка от Североизточна България*, in *Проблеми на прабългарската история и култура*, 4-2, София, 2007, p. 153 – 170.

DONCHEVA-PETKOVA, NINOV, PARUŠEV 1999 – Людмила Дончева-Петкова, Лазар Нинов, Веселин Парушев, *Одърци. Селище от Първото българско царство*, том. 1, София, 1999.

Gepizii 2011 – *Gepizii. Războinici și artizani. Catalog de expoziție*, (ed. Corneliu Gaiu), Bistrița, 2011.

GOLUBEVA, MOGILJNIKOV, SEDOV, ROZENFELJDT 1987 – Л.А. Голубева, В.А. Могильников, В.В.Седов, Р.Л. Розенфельдт, *Финно-угры и балты в эпоху средневековья*, Москва, 1987.

HAȘOTI, MIHAIL 1983 – Puiu Hașotti, Eugen Mihail, *Cercetări perieghetice între localitățile Izvorul Mare și Cochirleni*, Pontica 16 (1983), p. 285 – 294.

MĂNUCU-ADAMEȘTEANU 1992 – Gheorghe Mănuclu-Adameșteanu, *Cruci relicvar de tip bizantin descoperite în sudul Dobrogei*, Pontica 25 (1992), p. 349 – 354.

ОРАИЋ 1991 – Andrei Opaïț, *O săpătură de salvare în orașul antic Ibida*, SCIVA 42 (1991), 1-2, p. 21 – 56.

OPREANU, VOIȘIAN, BOTA 2007 – С. Opreanu, V. Voișian, E. Bota, *Mărmântul unui războinic din epoca migrațiilor descoperit la Cluj-Napoca – „Polus”*, in S. Nemeti, Fl. Fodorean, E. Nemeth, S. Cociș, I. Nemeti, M. Pîslaru (eds.), *Dacia Felix. Studia Michaeli Bărbulescu oblata*, Cluj-Napoca, 2007, p. 510 – 519.

PARASCHIV-TALMAȚCHI 2010 – Cristina Paraschiv-Talmațchi, *Noi informații privind evul mediu timpuriu în zona centrală a Dobrogei*, Pontica 43 (2010), p. 283 – 301.

PETRE 1962 – Aurelian Petre, *Săpăturile de la Piatra Frecăței*, Materiale 8 (1962), p. 565 – 589.

PETRE 1987 – Aurelian Petre, *La romanité en Scythie Mineure (II^e – VII^e siècles avant notre ère). Recherches archéologiques*, București, 1987.

PLETNEVA 1992 – Светлана Плетнева, *Стратиграфические исследования Плиски (работы Советского отряда 1977-1980 гг.)*, Плиска-Преслав 5 (1992), p. 35 – 76.

PLETNJOV, PAVLOVA 1992 – Валентин Плетньов, Ваня Павлова, *Раннесредновековни ремъчни накрайници във Варненския Археологически Музей*, Известия на Народния Музей-Варна 28 (1992), p. 158-223.

PREDA 1980 – Constantin Preda, *Callatis. Necropola romano-bizantină*, București, 1980.

RAŠEV 2008 – Рашо Рашев, *Българската езическа култура VII-IX век*, София, 2008.

ȘHTEREVA, MELAMED, GORYANOVA, PAZVANTOVA 1994 – Ирина Щетева, Катя Меламед, Снежана Горянова, Евгения Пазвантова, *Българският средновековен град. Технологии*, София, 1994.

STANILOV 1995 – Станислав Станилов, *Метални гарнитурни за ремъци и облекло от двореца във Велики Преслав*, Плиска-Преслав 7 (1995), p. 110 – 135.

STANILOV 2006 – Станислав Станилов, *Художественият метал на българското ханство на Дунав (7-9 век.)*, София, 2006.

ȘTEFAN, BARNEA, COMȘA, COMȘA 1967 – Gheorghe Ștefan, Ion Barnea, Maria Comșa, Eugen Comșa, *Dinogetia. I. Așezarea feudală timpurie de la Bisericuța-Garvăn*,

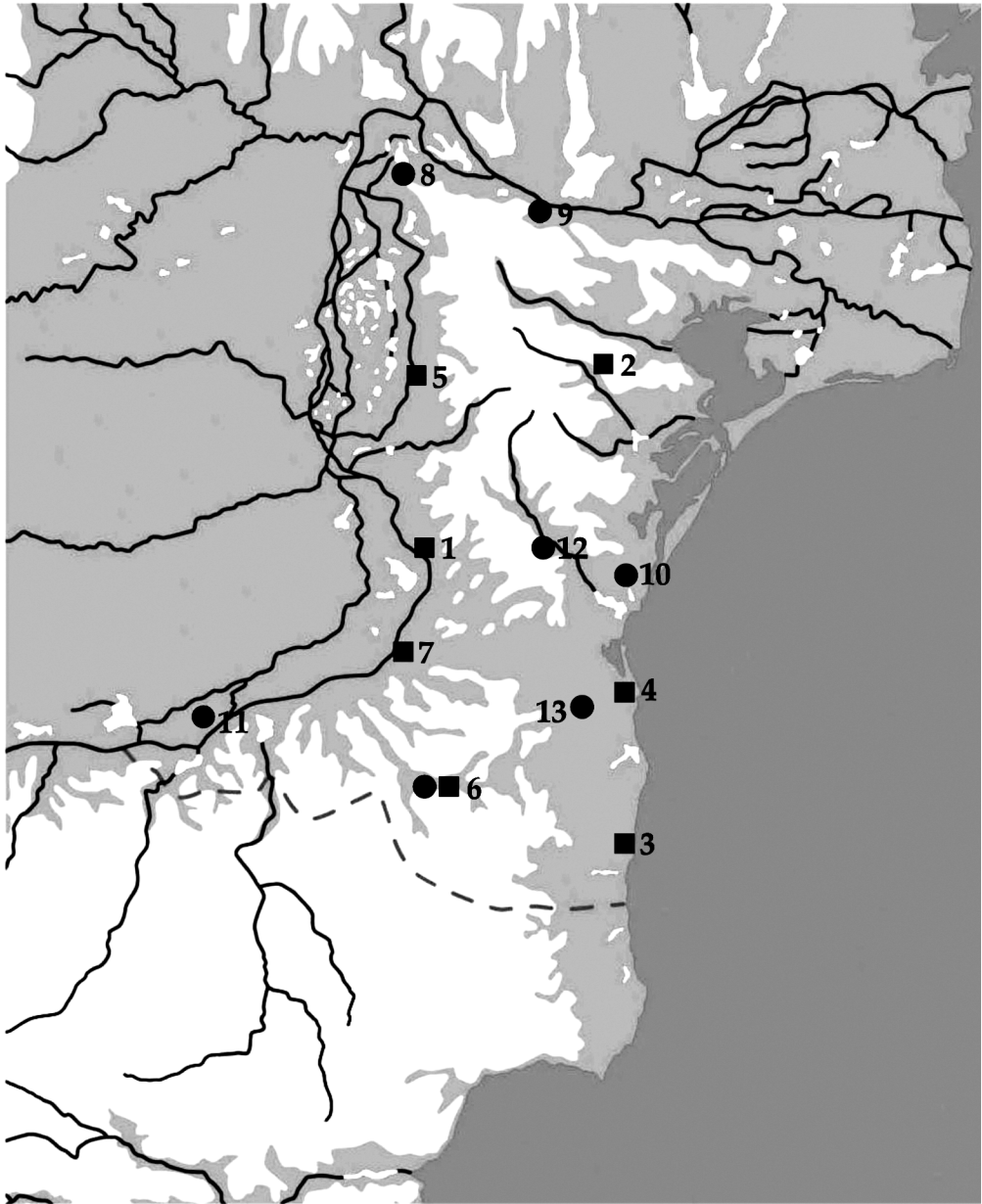
București, 1967.

TEODOR 2003 – Dan Gh. Teodor, *Elemente nomade din secolele VI – VIII d.Hr. în regiunile de la est și sud de Carpați*, in Dan Gh. Teodor, *Spațiul carpato-dunăreano-pontic în mileniul marilor migrații*, Buzău, 2003, p. 495 – 509.

VITLYANOV 2007 – Стоян Витлянов, *Непубликувани коланни гарнитури от Велики Преслав*, in *Изследвания по Българска Средновековна Археология. Сборник в чест на проф. Рашо Рашев*, (ed. P. Georgiev), Фабер, 2007, p. 245-258.

YOTOV, ATANASOV 1998 – Валери Йотов, Георги Атанасов, *Скала. Крепост от X-XI век до с. Кладенци, Тервелско, София*, 1998.

ZIRRA 1963 – Vlad Zirra, *Двуобрядовый могильник раннефеодальной эпохи в Капул Вишлор-Истрия*, *Dacia N.S.* 7 (1963), p. 355–412.



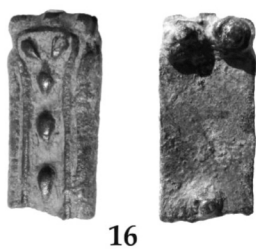
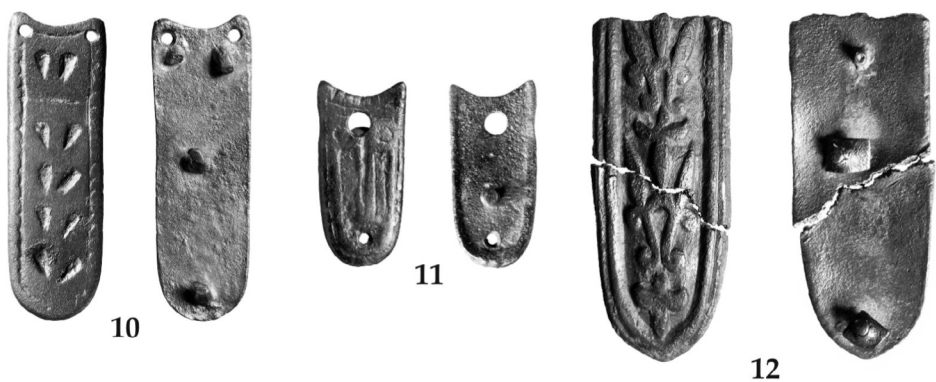
Pl. 1 - Territorial distribution of strap ends discoveries in Dobrudja:

▣ (6th-7th centuries) ● (9th-11th centuries)

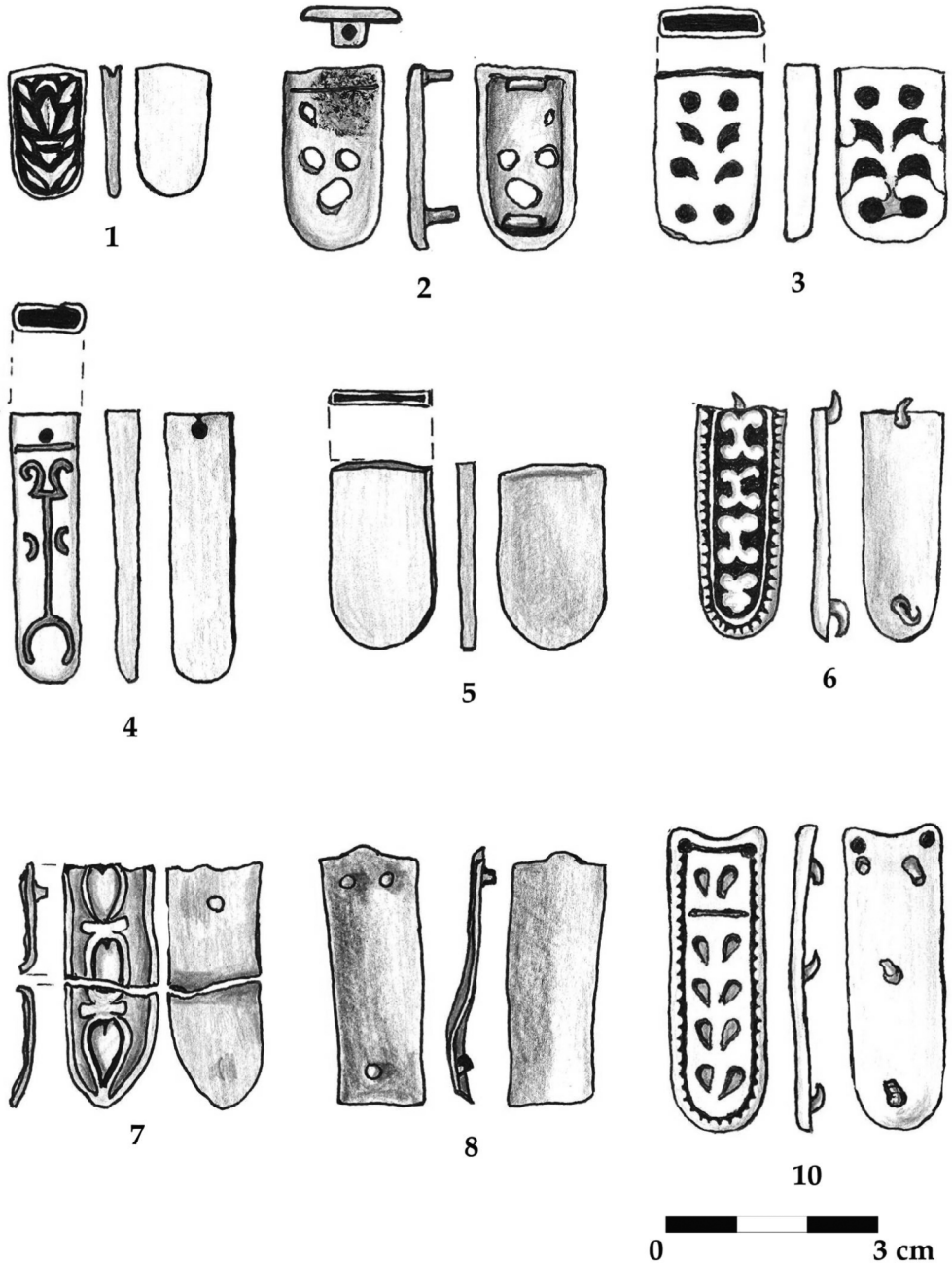
1. Capidava; 2. Slava Rusă; 3. Mangalia; 4. Constanța; 5. Pietra Frecăței;
 6. Tufani; 7. Cochirleni; 8. Garvăn; 9. Isaccea; 10. Istria; 11. Păcuiul lui Soare;
 12. Târgușor; 13. Valu lui Traian.



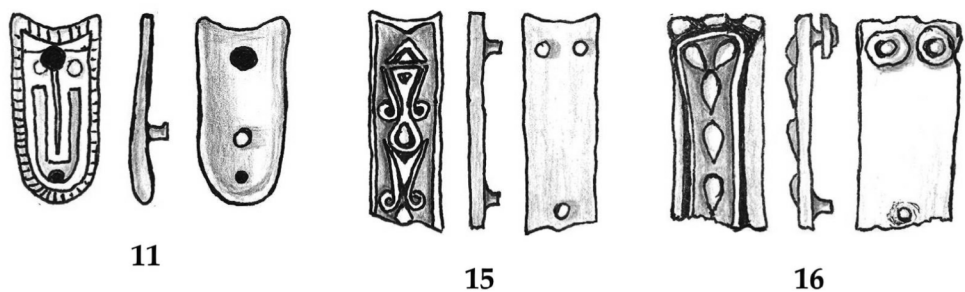
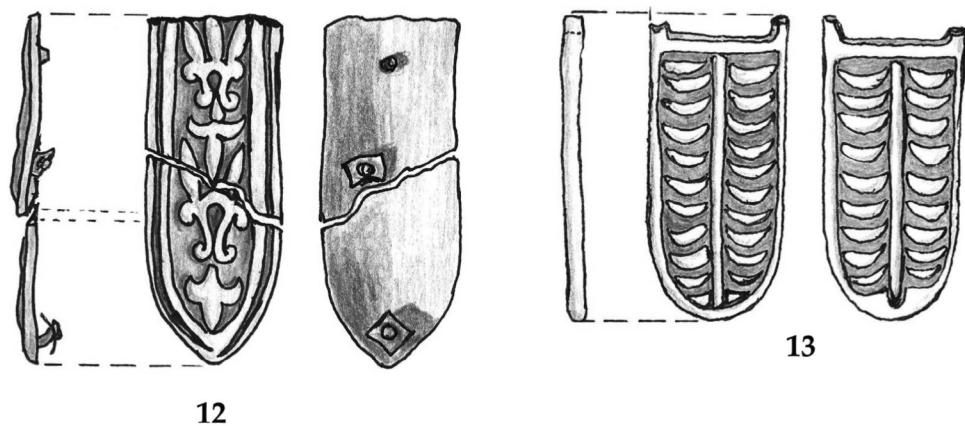
Pl. 2 – Strap ends presented in the catalogue.



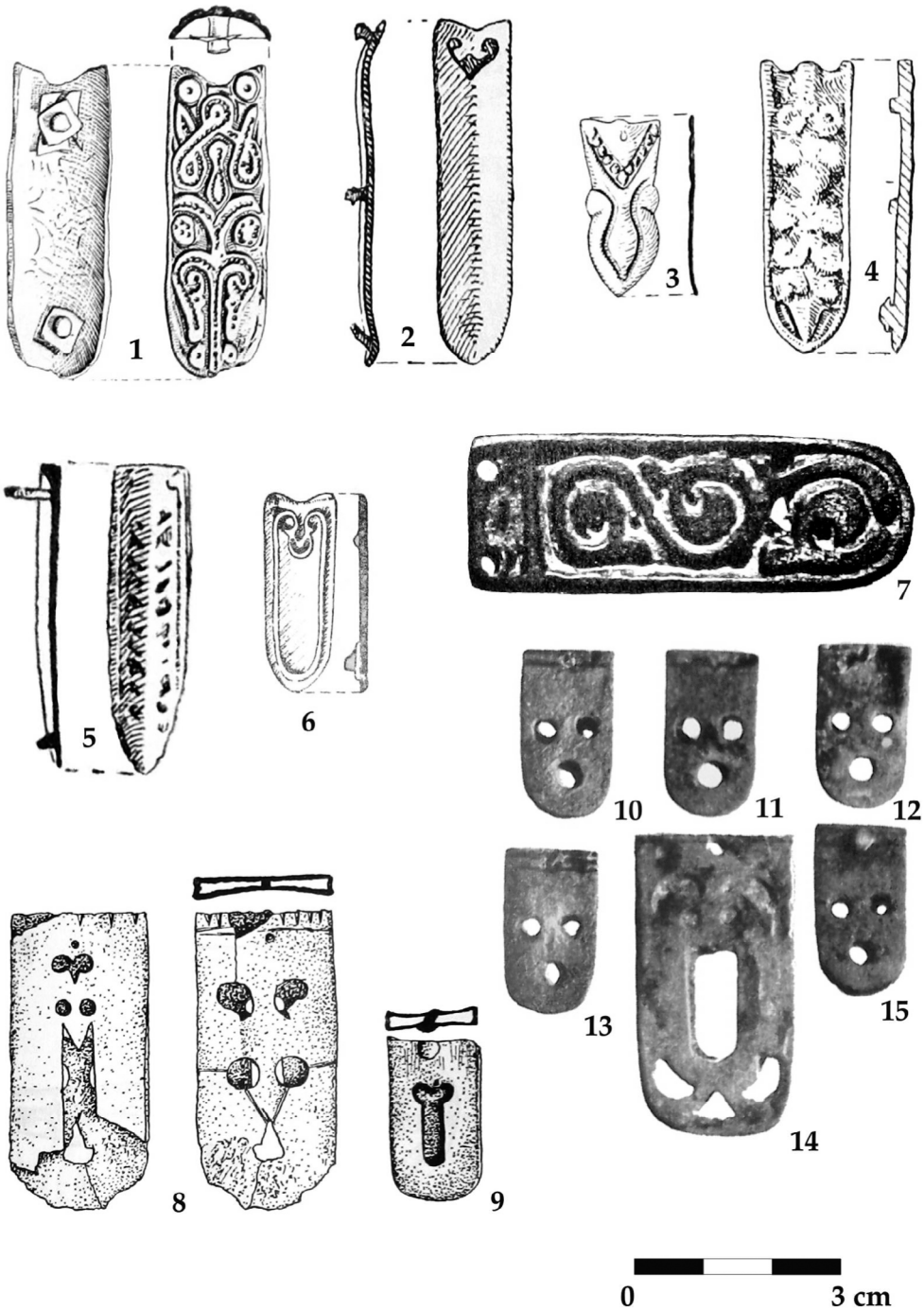
Pl. 3 – Strap ends presented in the catalogue.



Pl. 4 – Strap ends presented in the catalogue.



Pl. 5 – Strap ends presented in the catalogue.



Pl. 6 - Others strap ends discovered in Dobrudja: 1-4. Garvăn; 5. Isaccea; 6. Păciul lui Soare; 7. Istria; 8-9. Mangalia; 10-15. Piatra Frecăței.