

# STAMPS ON AMPHORAE AND LAGYNOI HANDLES FROM THE ISLAND OF CHIOS\*

Aris TSARAVOPOULOS

Andrei OPAITȚ

Gelly FRAGOU

**Keywords:** *Chios, stamps, amphorae, lagynoi, Black Sea.*

**Summary:** *The island of Chios has provided a great deal of evidence concerning the local production of amphorae and lagynoi that were transported abroad. Early maritime contacts between Chios and the Black Sea region are well-known. The authors aim to reveal the contacts in the Hellenistic and early Roman times, using the evidence provided by stamped amphorae and lagynoi handles. The authors focus not only on a number of well-known Chian names stamped on amphorae and lagynoi handles, but also on a number of lesser known names that enlighten the Chian presence outside the island.*

## Introduction

The geographical position of Chios and the role the island played in the trade routes throughout the antiquity is well-known. Chian amphorae have been found in all regions of the Aegean, the Black Sea, and throughout the eastern and western Mediterranean. The abundance of Chian amphorae is reasonable, as Chios was already an established city state since the 7<sup>th</sup> century BC. During its history, the island of Chios enjoyed privileges due to its geographical position and from its production of its famed wines, *Ariousios* and *Fanaios*<sup>1</sup>. Local production of transport amphorae is attested from the 6<sup>th</sup> century BC through to the late Roman period.

The island seems to have been one of the first wine/oil exporters in the Pontus region. Excavations have uncovered numerous Chian amphorae along the

---

\* The authors are grateful to Angelos Matthaïou for his help on the onomastics and the epigraphic matters.

<sup>1</sup> Athenaeus, I. 26, 29, 32; Pliny, XIV.8.9; XIV.17.97; Strabo, XIV.1.35.

entire coastline of the Black Sea and beyond<sup>2</sup>, including: Phanagoria<sup>3</sup>, Belozerkoe<sup>4</sup>, Pervomaevka<sup>5</sup>, Olbia, Myrmekion and Niconion<sup>6</sup>, the Cimmerian Bosphorus<sup>7</sup>, Elizavetovskoe<sup>8</sup>, Usad'ba Litvinenko (Stanislav 2)<sup>9</sup> on the north shore of the Black Sea, Chersonnesos<sup>10</sup>, Căscioarele<sup>11</sup> and Dichiseni<sup>12</sup> in southern Walachia<sup>13</sup>, Tulcea<sup>14</sup>, Jurilovca (Orgame)<sup>15</sup>, Istros<sup>16</sup>, Vișina<sup>17</sup>, Sf. Gheorghe<sup>18</sup> and Enisala in northern Dobrudja<sup>19</sup>, Callatis<sup>20</sup>, Tomis<sup>21</sup>, Agigea and Ion Corvin in southern Dobrudja<sup>22</sup> and in Odessus, Apollonia and Mesembria<sup>23</sup> on the Bulgarian coast.

Most of the publications, mentioned above, generally deal with the early Chian amphorae of the 6<sup>th</sup> and the 5<sup>th</sup> centuries BC that have been found around the Black Sea region. The distinctive well-known shapes of the amphorae, with the early bulging neck and the distinguished toe helped in their identification. Thus, it is the early contacts between the island of Chios and the Black Sea region that dominate, whilst the later contacts, during the late Hellenistic and Roman periods, remain largely unknown.

This paper presents new evidence of stamps dating between the late Hellenistic and Roman periods. We wish to bring to light a number of stamps that have not been identified as Chian until now. This material is part of an ongoing project we have undertaken to identify and classify a number of stamped amphorae and lagynoi handles, loom weights, roof tiles and water pipes, which are either stray finds or have come from rescue excavations that have been taking place in Chios since 1981. The material for this project is stored in the Archaeological Museum of Chios. The collection contains over 500 stamps, the

---

<sup>2</sup> We would need a great number of publications in order to discuss all the regions where Chian amphorae have been found. For this reason and for the needs of this paper we will only focus on the Chian stamped handles that have been discovered on the island and are yet unidentified. We will compare these with finds from around the Black Sea region.

<sup>3</sup> ŠELOV 1956, p. 129

<sup>4</sup> BYLKOVA 2005a, p. 220, 223

<sup>5</sup> BYLKOVA 2005a, p. 227

<sup>6</sup> BRAŠINSKIJ 1973, p. 123, notes 59, 60; BYLKOVA 2005a, p. 221

<sup>7</sup> ZEEST 1960, p. 74-9, 138, table 11; BYLKOVA 2005a, p. 220

<sup>8</sup> BRAŠINSKIJ 1980, p. 209-210, 215-216, Table I-II, VII-VIII

<sup>9</sup> BYLKOVA 2005a, p. 218-219

<sup>10</sup> BYLKOVA 2005a, p. 221

<sup>11</sup> SÎRBU 1983, p. 47

<sup>12</sup> SÎRBU 1983, p. 48

<sup>13</sup> SÎRBU 1983, p. 58, 61

<sup>14</sup> BAUMANN 1973-1975, p. 32

<sup>15</sup> SÎRBU 1983, p. 50; MĂNUCU ADAMEȘTEANU 2008, p. 79-94

<sup>16</sup> CANARACHE 1957, p. 9, 15, 351, 354; LAZAROV 1982, p. 15; BUZOIANU 1991, p. 75-80, 85-88, 92-93

<sup>17</sup> SÎRBU 1983, p. 54, 58

<sup>18</sup> BAUMANN 1973-1975, p. 39-40; SÎRBU 1983, p. 52

<sup>19</sup> BAUMANN 1973-1975, p. 45

<sup>20</sup> BUZOIANU 1979, p. 91, 93, nos 38, 55, pl. III.5, IV.1; SÎRBU 1983, p. 58, 61

<sup>21</sup> LAZAROV 1982, p. 15; BĂRBULESCU *et al.* 1987, p. 92, 99, 101, 105; BUZOIANU 1991, p. 75-80, 85-88, 92-93

<sup>22</sup> SÎRBU 1983, p. 45, 49

<sup>23</sup> MUȘEȚEANU *et al.* 1978, p. 188; LAZAROV 1982, p. 7-15

greater amount of which is Chian. A small number come from the islands of Rhodes, Paros, Kos etc.

Stamps with names appear on Chian amphorae and lagynoi handles from the Hellenistic through to the Roman period. If the Chian amphorae shapes of the early periods are well identified by exploring the stamped handles of the lesser known Hellenistic and periods we expect to broaden our knowledge on the contacts between the island of Chios and the Black Sea region.

We mention here that we are aware of the difficulty of dating handles outside the archaeological context. Our identification relies greatly on similar stamps that were found in certain archaeological contexts on Chios and other consuming sites. The dating of the stamps relies also on the letters form and related names from coins and inscriptions from Chios.

It seems that local pottery production did not stop on the island of Chios from the 6<sup>th</sup> century BC until the 3<sup>rd</sup> century AD. During the Archaic and Classical periods ceramic kilns were located to the north and south of the modern city of Chios. Evidence of ceramic kilns from the Hellenistic and Roman periods come from rescue excavations that have taken place on the whole island<sup>24</sup> (*fig. 1*). During these periods, an increase in production seems to have occurred in a wide region to the south of the modern city of Chios. This also provides us with evidence about the increase in the population and the settlements of the island during these periods.

A ceramic kiln of the 2<sup>nd</sup> and 3<sup>rd</sup> centuries AD was uncovered outside the south part of the city (*fig. 2*). The workshop produced *Dressel 24 similis* type amphorae, in a large kiln, along with other ceramics such as unguentaria, in a smaller kiln<sup>25</sup> (*fig. 3*). To the north of the island, near to the modern village of Spartounda, evidence of another ceramic kiln was found. A number of amphorae sherds that were found in the furnace chamber date it to the late Roman period<sup>26</sup>.

Chian stamps with names appear from the end of the 4<sup>th</sup> century BC to the late imperial times. In general, Chian stamps do not bear symbols (exceptions being stamps including the sphinx, the amphora, and a bunch of grapes), prepositions, adjectives of nationality, titles, and patronymics, attested in other Aegean production centers. They only bear a name in the genitive, or more rarely in the nominative, written usually on one line, occasionally on two lines<sup>27</sup>. One might argue that some amphorae would have been recognized in antiquity by their shape and the clay used without the need for an ethnic<sup>28</sup>. This may have been the case with the distinguished shapes of the Chian amphorae. Sometimes one can read an abbreviation instead of a complete name, or monograms and combinations of the most characteristic letters of a name, some of which can be easily read, while others are difficult to decipher.

<sup>24</sup> TSARAVOPOULOS 1986a, p. 124-144

<sup>25</sup> OPAIT& TSARAVOPOULOS 2010, p. 23-25

<sup>26</sup> TSARAVOPOULOS 1985, p. 80

<sup>27</sup> GRACE 1949; GRACE & SAVVATIANOU-PETROPOULAKOU 1970, p. 361; BÖRKER 1998, p. 59; JÖHRENS 1999, p. 248 ; GARLAN 2000, p. 25, 76, 139-140

<sup>28</sup> GRACE 1947, p. 449

Chian handles are stamped on their highest point. They are usually round or oval in section, and very often narrow downwards (*fig. 4*). During the 2<sup>nd</sup> and 3<sup>rd</sup> centuries AD the handles became wider. Another characteristic of the vessels—not always preserved—is the white yellowish skin, which sometimes darkens, that covers the whole body including the handles. The shape of the stamp is usually long and narrow rectangular with rounded ends. The clay is clean without visible inclusions predominantly orange-red in colour, occasionally exhibiting different colour tones<sup>29</sup>. Toning depends on the type of the clay used, the firing temperature and even on the potter; we have noticed the same colour tones on handles that bear the same name.

Chian wine was known as one of the finest wines in the ancient world<sup>30</sup> and was among the first wines that arrived in the Pontus region. Its distribution, however, in the Pontic market was limited, in the 4<sup>th</sup> century BC, when other wine production centers had entered this market dynamically.

Compared to other significant centers of wine and oil production, stamped handles from Chios are not abundantly found in the various consuming sites. Most likely this is due to the following reasons:

1. Difficulty in identifying stamps as Chian, since neither the name of the city nor other characteristics are mentioned that would help locate the origin of the stamps. It should be mentioned here that most often we find only the stamps without any other identifying pieces of the amphorae.

2. There are also amphorae shapes that have not as yet been identified as Chian. Such an example comes from the city of Chios; an amphora that contained a burial dated to the 3<sup>rd</sup> century BC (*fig. 5*). It was an unidentified Chian amphora shape, until it was found on the island along with the name *Ἐπικράτου* stamped on its handle. The amphora bears a flaring mouth with a band rim, a flared neck, oval section handles, and an oval body with a discoid knob<sup>31</sup>.

3. The false attribution of Chian stamps to other production centers<sup>32</sup>. This may be due to the change of Chian amphorae shapes after the 1<sup>st</sup> century BC and their similarity with other common amphorae shapes.

4. Alternatively: stamping might not have taken place on every vessel in a batch, instead one amphora, for instance, might have been stamped out of a series of say 10 or 100 amphorae. This may also help explain the purpose of stamping, connecting it more with the control of manufacturing and export process rather than with the promotion of the product's origin.

For all the reasons discussed above, it is fundamental to familiarize ourselves with the stamps found in the place of their production in order to recognize them abroad. From the rich collection of stamps that are stored in the Archaeological Museum of Chios, we will now discuss those we recognize with safety as being Chian. More specifically we will discuss those stamps that have been found outside the island, but as yet have not been identified as Chian or in some cases have been attributed to other production centers.

<sup>29</sup> OPAIȚ & TSARAVOPOULOS 2010, p. 26

<sup>30</sup> Strabo XIV.1.35; Pliny XIV.8.9; XIV.17.97; Athenaeus I.26, 29, 32

<sup>31</sup> OPAIȚ & TSARAVOPOULOS 2011, here p. 307, figs. 41-43.

<sup>32</sup> See below

### The purpose of stamps on Chian handles

Over the last two centuries, many scholars have tried to explain the purpose of marks and stamps on amphorae<sup>33</sup>. We do not aim to repeat here all the theories and hypotheses concerning the purpose of stamps, but instead to discuss our observations since examining a large number of Chian stamps.

To whom did the names of the stamps belong? To *archons* of the city, officials, producers, traders, potters or others involved in the production of the vessels? The possibility that the names are linked to the owners of pottery workshops or “commercial corporations” seems unlikely as the names would continue over time. In this case for many generations as the “corporations” and the workshops would be inherited from father to son, to grandson, keeping the family name through the generations. However, from the 120 names, in our catalogue, only two names, *Hikesios* (fig. 24) and *Charmides*<sup>34</sup> (fig. 32) are repeated through the generations.

The only rich catalogue of Chian *archons* and *stephanephoroi* (officials) was developed through the study of coins and inscriptions. The catalogue was initially organized by Mavrogordatos<sup>35</sup> and then enriched by Lagos<sup>36</sup>. This catalogue contains 150 names that span 330 BC until the 3<sup>rd</sup> century AD. Less than 30 of them can be identified and compared with the 130 names and monograms contained in our catalogue. Lagos identified the names on the coins with *moneyers*, the responsible for the finance *archons*. Only few names, however, coincide in the two catalogues. This crossover makes us believe that the names on the stamps might have belonged to *archons* responsible for the quality of the manufactured amphorae or for the control of the exported products.

### Names, abbreviations and monograms on Chian stamps<sup>37</sup>

The catalogue of stamps presented below includes 1. Complete names with symbolic motifs, 2. Plain complete names in the genitive or, rarely, in the nominative, 3. Abbreviations and 4. Monograms.

#### Complete names with symbolic motifs

There are a small number of round stamps with a name and an additional symbolic motif, such as the vine leaf or the Sphinx, the main symbol of Chios.

---

<sup>33</sup> GRACE 1934, p. 197; GRACE 1947, p. 449; GRACE 1949, p. 182; GRACE 1952; GRACE 1956, 166 ff; GRACE & SAVVATIANOU-PETROPOULAKOU 1970, p. 280, 359-363; KOEHLER 1978b, p. 237; KOEHLER 1982, p. 289; SARIKAKIS 1986, p. 122; VAN DER MERSCH 1994, p. 114; LAWALL 1998b, p. 83-84; GARLAN 2000, p. 20-28, 50-55, 74-76, 127, 140, 153-154, 159-160, 171-172

<sup>34</sup> see below *Χαρμίδης*

<sup>35</sup> MAVROGORDATOS 1915a and b, p. 1-52, 361-432, pl. I, II, XVIII, XIX; 1916, p. 281-355, pl. X, XI; 1917, p. 281-355, pl. IX; 1918, p. 1-79, pl. I, II; 1919, p. 217-220

<sup>36</sup> LAGOS 1998

<sup>37</sup> New stamps on Chian amphora handles have been published in FRAGOU 2013.

**Ἀριστομένους with vine leaf**<sup>38</sup> (*fig. 6.1*)

Round stamp on an amphora handle with skin. The diameter of the stamps is 1.9 cm and the height of the letters is 0.4 cm. The cross-section of the handle is 3X2.7 cm. The name bears two lunate *sigma*, and the stamp bears a vine leaf in the middle. The vine leaf is the symbol of one of the main wealth sources of the island – the wine.

Date: 2<sup>nd</sup> century BC.

**Ποσειδωνίου with sphinx** (*fig. 6.2*)

Round stamps on amphorae handles with skin; the diameter of the stamps is 1.5 cm and the height of the letters is 0.2 cm. The cross section of the amphorae handles is 3.6 x 2.5 cm. The name bears a lunate *sigma*.

Date: 270-220 BC<sup>39</sup>.

A Chian stamped amphora handle with a sphinx has also been found on the small islet of Mikri Dragonara, off the coast of the island of Kythera in the southern Aegean, and is dated to the late 2<sup>nd</sup> century BC<sup>40</sup>.

The sphinx was the main state symbol of the island of Chios. It is the only official state symbol that was used on the island until the late imperial times<sup>41</sup>. According to Grace, the appearance of the sphinx on the amphora handles was related to the time the Chians changed the shape or capacity of the export amphora containers<sup>42</sup>.

**Complete names**

It seems that complete names in the genitive, and more rarely in the nominative, appeared on Chian handles from the end of the 4<sup>th</sup> century BC until the late Roman period.

**Ἀθηναγόρου** (*fig. 7*)

Deep rectangular stamp on an amphora handle with white skin. The dimensions of the stamp are l: 3.7 cm, w: 0.7 cm, with a letter height of 0.5 cm. The cross-section of the handle is 3.5 x 3.4 cm.

The name is common in Chios from inscriptions and coins<sup>43</sup>.

Date: late 3<sup>rd</sup>/early 2<sup>nd</sup> century BC.

**Ἀθηναίου**<sup>44</sup> (*fig. 8*)

Shallow rectangular with rounded ends stamps on lagynoi handles, with white skin. The dimensions of the stamps are l: 3 cm, w: 0.6 cm, with a letter height of 0.5 cm. The cross-section of the handles is 3 x 1.5 cm.

The name is common in Chios from inscriptions and coins<sup>45</sup>.

<sup>38</sup> SARIKAKIS 1989, p. 65, A 523

<sup>39</sup> ZAHAROU-LOUTRARI 1998, p. 106-7

<sup>40</sup> ZAHAROU-LOUTRARI 1998, p. 110-1

<sup>41</sup> ZAHAROU-LOUTRARI 1998

<sup>42</sup> GRACE 1949, p. 182; GRACE & SAVVATIANOU- PETROPOULAKOU 1970, p. 359; GARLAN 2000, p. 76

<sup>43</sup> MAVROGORDATOS 1917, p. 225, no 83; 1918, p. 73; SARIKAKIS 1989, p. 13, A 110

<sup>44</sup> DERFLER 1993, no 114, pl. 46.2

<sup>45</sup> MAVROGORDATOS 1917, p. 222, 223, no 76a, no 78; 1918, p. 73; SARIKAKIS 1989, p. 15, A. 124; LAGOS 1998, series 18 & 19, no 58

Date: 2<sup>nd</sup> century BC.

**Ἀλκιμάχου**<sup>46</sup> (*fig. 9*)

Rectangular stamps on amphorae handles, which taper downwards. All the handles bear evidence of skin. The dimensions of the stamps are l: 3 cm, w: 0.9 cm and with a letter height of 0.4 cm. The cross-section of the handles is 3.75 x 2.6 cm. The name is common in Chios<sup>47</sup>.

Date: 4<sup>th</sup> BC.

**Ἀπελλεῦς**<sup>48</sup> (*fig. 10*)

Rectangular stamps on amphorae and lagynos handles with thick skin. The dimensions of the amphorae and the lagynos stamps are l: 3.4 cm and 4.5 cm, w: 1.2 cm and 1 cm, with a letter height of 0.5 cm and 0.6 cm respectively. The cross-section of the amphorae handles is 3 x 3.1 cm tapering downwards, and the cross-section of the lagynos handle is 3 x 1.5 cm.

The name is Ἀπελλῆς in the nominative. The letters "A" and "E" can be found reverse. The name can also be found stamped on two lines.

Date: 2<sup>nd</sup> century BC.

**Ἀπολλωνίδου** (*fig. 11*)

Rectangular with rounded ends stamps, on two lines on amphorae handles with skin. The dimensions of the stamps are l: 3.4 cm, w: 1 cm, with a letter height of 0.5 cm. The cross-section of the handles is 3.5 x 2.3 cm. The letter *omega* is cursive. The name is very common in Chios<sup>49</sup>.

Date: 2<sup>nd</sup> century BC.

**Ἀπολλωνίου**<sup>50</sup> (*fig. 12*)

Rectangular with rounded ends stamp, on two lines, on an amphora handle with dark skin. The dimensions of the stamp are l: 3.1 cm, w: 0.9 cm, with a letter height of 0.3 cm. The cross section of the handle is 3.8 x 3.5 cm tapering downwards (3.1 x 2.9 cm). The letter *omega* is cursive.

Date: 2<sup>nd</sup> century BC.

**[Ἀ]ρτέμαδος**<sup>51</sup> (*fig. 13*)

Rectangular stamps on amphorae handles, with white skin. The dimensions of the stamps are 3.6 x 0.7 cm with a letter height of 0.3 cm. The cross-section of

<sup>46</sup> MACALISTER 1912, no 44; CROWFOOT *et al.* 1957

<sup>47</sup> MAVROGORDATOS 1916, p. 306, 313, nos 60, 63a; 1918, p. 73; SARIKAKIS 1989, p. 23, A 191; LAGOS 1998, series 18 & 19, no 61

<sup>48</sup> MAVROGORDATOS 1916, p. 318, 321, nos 66c, 67, p. 345, p. 355; 1918, p. 73; DESY 1989; SARIKAKIS 1989, p. 42, A 335; BÖRKER 1998, no 563, no 636; LAGOS 1998, series 18 & 19, nos 63, 64; JÖHRENS 1999, nos 564, 848-850

<sup>49</sup> MAVROGORDATOS 1915b, p. 412, no 53; 1916, p. 314, no 65, p. 321, no 67; SARIKAKIS 1989, p. 50, A 404; LAGOS 1998, series 18 & 19, no 66

<sup>50</sup> MAVROGORDATOS 1917, p. 226, no 85; BÖHRINGER & KRAUSS 1937, no 60; SARIKAKIS 1989, p. 54, A 434; LAGOS 1998, Roman series I, no 144

<sup>51</sup> SARIKAKIS 1989, p. 69, A 546

the handles is 2.8 x 2.7 cm. The letters *sigma* and *epsilon* are lunate. The name is *Ἀρτεμάς* in the nominative.

Date: 1<sup>st</sup> century BC.

**Βότρως**<sup>52</sup> (*fig. 14*)

Round retrograde stamp on two lines on an amphora handle with dark skin. The diameter of the stamp is 1.6 cm with a letter height of 0.4 cm. The diameter of the handle is 3.3 cm. The letter *sigma* is lunate.

Date: 2<sup>nd</sup> century BC.

**Δημοκρίτου** (*fig. 15*)

Rectangular with rounded ends stamp on an amphora handle with skin. The dimensions of the stamp are l: 4.1 cm, w: 0.6 cm, with a letter height of 0.5 cm. The cross-section of the handle is 3.3 x 2.8 cm and tapers downwards.

The stamp was found outside the pottery kiln, in the modern city of Chios, and it comes from the lower stratum<sup>53</sup>.

Date: 1<sup>st</sup> century BC/ 1<sup>st</sup> century AD.

**Ἐρμίου**<sup>54</sup> (*fig. 16*)

Long rectangular retrograde stamps, with lunate *epsilon*, on amphorae handles with skin. The dimensions of the stamps are l: 4 cm, w: 1.3 cm, with a letter height of 0.6 cm. The cross-section of the handles is 3.2 x 2.9-2.6 cm. The name is *Ἐρμίας* in the nominative.

Date: 1<sup>st</sup> century BC/ 1<sup>st</sup> century AD

**Εὐβούλου**<sup>55</sup> (*fig. 17*)

Deep rectangular with rounded ends stamp on an amphora handle with white skin. The dimensions of the stamp are: l: 3.5 cm, w: 0.9 cm with a letter height of 0.5 cm. The cross-section of the handle is 3 x 2.7 cm. The letter *epsilon* is lunate.

Date: 1<sup>st</sup> century BC/ 1<sup>st</sup> century AD.

**Εὐρυκράτου**<sup>56</sup> (*fig. 18*)

Deep rectangular with rounded ends stamps on amphorae and lagynos handles, with and without skin. The dimensions of the amphorae and the lagynos stamps are l: 3.8 cm and 2.8 cm respectively, w: 1 cm and 0.8 cm respectively, with a letter height of 0.5 cm. The cross-section of the amphorae handles is 3.5 x 3.1 cm, with a diameter of 3 cm, tapering downwards. The cross-section of the lagynos handle is 2.8 x 1.5 cm.

<sup>52</sup> SARIKAKIS 1989, p. 93, B 33

<sup>53</sup> TSARAVOPOULOS 1986a, p. 139-141, (the stamp is not mentioned in the article)

<sup>54</sup> SARIKAKIS 1989, p. 158, E 133

<sup>55</sup> SARIKAKIS 1989, p. 166, E 195

<sup>56</sup> SARIKAKIS 1989, p. 174, E 250

The name can be found retrograde, it is stamped on one or two lines, and it can also be found in short as Εὐρουκρα(-), Εὐρουκρ(-) and Εὐρουκ(-). Sometimes, some letters are reverse.

Date: 2<sup>nd</sup>/1<sup>st</sup> centuries BC.

The name appears also with a patronymic.

#### Εὐρουκράτου τοῦ Μαχίου (fig. 19)

Deep rectangular stamps, on two lines, on amphorae handles with white and without skin. In one example, the name is retrograde and stamped twice, while often some of the letters are reverse. The dimensions of the stamps are l: 3 cm, w: 0.9 cm, with a letter height of 0.4 cm. The cross-section of the handles is 3.4 x 3.3 cm. The patronymic *Μάχιος* is very rare and only attested once, in Thessaly<sup>57</sup>.

Date: 2<sup>nd</sup>/ 1<sup>st</sup> centuries BC<sup>58</sup>.

#### Ἡγησίου (fig. 20)

Rectangular stamps on amphorae handles, without skin. The dimensions of the stamps are l: 3.5 cm, w: 0.6 cm, with a letter height of 0.5 cm. The cross-section of the handles is 4.2 x 2.9 cm tapering downwards. They bear a lunate *sigma*.

Along with the stamps of *Μεν*, *Ἰκεσίου* and *Κρόνιος* are one of the most common stamps found on the island and outside.

Date: c. 200 BC<sup>59</sup>.

#### Ἡρακλείδου (fig. 21)

Deep rectangular stamp on an amphora handle with whitish skin. The dimensions of the stamp are: pres. l: 3.3 cm, w: 1.1 cm and with a letter of 0.4-0.5 cm. The cross-section of the handle is: 3.5 x 3.1 cm.

The name is very common, from inscriptions in Chios, in the 1<sup>st</sup> century BC<sup>60</sup>.

Date: 1<sup>st</sup> century BC.

#### Ἡρακλέοντος (fig. 22)

Rectangular stamp on two lines on an amphora handle with whitish skin. All the letters are retrograde and the letter *sigma* is lunate. The dimensions of the stamp are l: 2.1 cm, w: 1.2 cm, with a letter height of 0.4 cm. The cross-section of the handle is 4.2 x 2.6 cm.

Date: 1<sup>st</sup> century BC – 1<sup>st</sup> century AD.

<sup>57</sup> LGPN IIIB, p. 271

<sup>58</sup> PRIDIK 1896, p. 177, nos 5-6; PRIDIK 1917, p. 111, nos 237, 240; BÖHRINGER & KRAUSS 1937, no 72; SARIKAKIS 1989, p. 174, E 251; ARIEL & FINKIELSZTEJN 1994, p. 230, SAH 132; PALACZYK & SCHÖNENBERGER 2003, nos 561-565

<sup>59</sup> GRACE 1956, p. 166, no 197; CROWFOOT *et al.* 1957; GRACE & LENGER 1958, p. 368-434; GRACE & SAVVATIANOU-PETROPOULAKOU 1970, p. 362, E 227; SZTETYŁŁO 1976, no 363; SARIKAKIS 1989, p. 198, H 14; BÖRKER 1998, no 566; JÖHRENS 1999, nos 853-855

<sup>60</sup> SARIKAKIS 1989, p. 205, no 63

**Ἰκεσίου** (*fig. 23*)

Rectangular and oval stamps on amphorae and lagynos handles, with dark skin. The dimensions of the stamps are l: 2.6 cm and 2.4 cm, w: 0.7 cm and 1.2 cm, with a letter height of: 0.5 cm and 0.7 cm respectively. The diameter of the amphorae handles is 3.7 cm tapering downwards, while the cross-section of the lagynos handle is 2.4 x 1.5 cm.

The stamp is very common on handles found outside the island of Chios<sup>61</sup>. It is also a name that seems to have had a successor, as a number of these stamps bear a lunate "C" and are less carefully inscribed and stamped.

Date: 3<sup>rd</sup> century BC<sup>62</sup>.

**Κρόνιος**<sup>63</sup> (*fig. 24*)

Rectangular stamps on amphorae handles, with skin. The dimensions of the stamps are l: 2.1 cm, w: 0.9 cm, with a letter height of 0.4 cm. The cross-section of the amphorae handles is 3.5 x 3.1 cm tapering downwards.

It is one of the few names in the nominative. The name can be found either fully written with a lunate *sigma* or abbreviated as Κρονι(-), Κρο(-) or even with the monogram Κρ on round stamps. Some examples are retrograde.

The Κρ and Κρο examples are also found on square and round stamps on lagynoi handles with skin. The dimensions of the stamps are l: 1.4 cm, w: 0.6 cm, and with a diameter of 1.4 cm and with a letter height of 0.5 cm. The cross-section of the handles is 3 x 1.6 cm.

Date: 2<sup>nd</sup>/ 1<sup>st</sup> centuries BC.

**Νεικηφόρου** (*fig. 25*)

Rectangular with rounded ends stamp on an amphora handle without skin. The dimensions of the stamp are l: 4.8 cm, w.: 1 cm, with a letter height of 0.5 - 0.8 cm. The cross-section of the handle is 3.5 x 2.2 cm.

The letter "N" is retrograde. The name *Νεικηφόρος* (=Νικηφόρος) is written with an "EI," which is read as "I," when the "EI" and the "I" obtained the same sound.

Date: late 2<sup>nd</sup> century BC.

**Ῥήσιος** (*fig. 26*)

Round stamp on a lagynos handle with dark brown skin. The name is found retrograde between two circles. The diameter of the stamp is 1.8 cm. The diameter of the circles is 0.5 cm and the height of the letters is 0.4 cm. The handle is

<sup>61</sup> GRACE 1934, p. 282, nos 240-241; GRACE 1956, p. 166, no 198, pl. 73; METZGER 1969, nos 3-4; CALVET 1972, p. 47, no 96; SZTETYŁŁO 1976, p. 96, nos 360-2; SZTETYŁŁO 1983, no 351; COULSON *et al.* 1997, no 35; JÖHRENS 1986, no 19; SARIKAKIS 1989, p. 242, I.22; ARIEL 1990, p. 74, S 453; SZTETYŁŁO 1991, nos 214 - 215; BÖRKER 1998, p. 567-572; JÖHRENS 1999, p. 856; PALACZYK & SCHÖNENBERGER 2003, nos 172-185; ARIEL 2005, no 14; LAWALL 2007b, p. 56

<sup>62</sup> LAGOS 1998, series 17, no 40

<sup>63</sup> GRACE 1934, no 248; GRACE 1956, p. 167 no 201 (AH 128); LINGER 1957, p. 175, no 119; GRACE & SAVVATIANOU-PETROPOULAKOU 1970, p. 362, E 228; SARIKAKIS 1989, p. 278, K 170; BÖRKER 1998, nos 613, 645-647, 700-701, 739

elongated oval in cross-section. The name is *Ρῆσις* in the nominative and is very rare. It is attested only once in Samos<sup>64</sup>.

Date: 3<sup>rd</sup> century BC.

### Συπέτου (fig. 27)

Deep rectangular stamp on an amphora handle without skin. The dimensions of the stamp are l: 4.4 cm, w: 1.2 cm, with a letter height of 0.7 cm. The cross-section of the handle is 4.4 x 2.5cm. It bears a lunate *sigma*.

It was found over fired around the area of pottery workshops in the modern city of Chios<sup>65</sup>. Similar stamps come from Acidava and Gornea (Caraș-Severin) that are dated to the second half of the 2<sup>nd</sup> century AD<sup>66</sup>. Until recently the name along with the origin of the stamp were unidentified<sup>67</sup>.

### Σώζων<sup>68</sup> (fig. 28)

Deep rectangular stamps on amphorae handles, with dark skin. The dimensions of the stamps are l: 4.8 cm, w: 1 cm, with a letter height of 0.6 cm. The cross-section of the handles is 4.5 x 2.3 cm tapering downwards.

It was found over fired around the area of pottery workshops in the modern city of Chios.

It is one of the few names in the nominative, although it may be an abbreviation of the genitive form: *Σώζων(τος)*. It bears a lunate *sigma*, a cursive *omega* and a retrograde "Z." The stamps were found over-fired around an area of pottery workshops in the modern city of Chios. The same stamps have been found in Romula, Acidava, Napoca, Sucidava, Apulum, Orlea and Tyras, in Viminacium (Moesia Superior), and Philippopolis-Trimontium (Thracia). For some years the origin of these stamps was uncertain and difficult to be established, while sometimes the explanation that was given was based on false information<sup>69</sup>. Sometimes the attention was turned towards the eastern Mediterranean and more particularly towards the Aegean Sea, but the island of Chios was never mentioned as the place of their origin<sup>70</sup>. Now, their origin is established<sup>71</sup>.

Date: late 2<sup>nd</sup>/ early 3<sup>rd</sup> century AD.

<sup>64</sup> MATTHAIIOU 1989, p. 67-68, cf. IG XII 6, 560

<sup>65</sup> TSARAVOPOULOS 1986a, p. 139-141, (the stamp is not mentioned in the article); OPAIȚ & TSARAVOPOULOS 2011, p. 321, cat. 65, figs. 32, 33.

<sup>66</sup> BÖRKER 1998, no 570 (1314); RUSCU 2003, p. 13, nos 1, 40,54, pl. XII

<sup>67</sup> GUDEA 1973, p. 569-573

<sup>68</sup> STAERMAN 1951, p. 42, Abb. 6, Nr. 223; LIFSHITZ 1963, p. 556, no 6; TUDOR 1965, p. 43 POPILIAN 1974, p. 139; FLORESCU & PETOLESCU 1977, p. 187, no 463; PREDĂ & GROSU 1993, p. 50; BJELAJAC 1996, p. 58, nos 91-92, fig. XVI-XVIII; BÖRKER 1998, no 729; RUSCU 2003, nos 1, 31, 99, pl. XVIII; RUSCU 2003, p. 75, no 127; RUSCU 2003, p. 32, no 31, pl. VIII; ARDEȚ 2007, p. 209-210, nos 21, 24-25, figs 105, 108-9; DYCZEK 2008, p. 518; OPAIȚ & TSARAVOPOULOS 2010, p. 26-28 ; OPAIȚ & TSARAVOPOULOS 2011, p. 321, cat. 63, 64, figs. 32, 33.

<sup>69</sup> POPILIAN 1974, p. 140

<sup>70</sup> TUDOR 1965, p. 43

<sup>71</sup> OPAIȚ & TSARAVOPOULOS 2010, p. 26-28

**Σώσου**<sup>72</sup> (*fig. 29*)

Rectangular with rounded ends stamps on amphorae handles, with dark skin. The dimensions of the stamps are l: 2.5 cm, w: 1 cm, with a letter height of 0.4-0.6 cm. The cross-section of the handles is 3.3 x 3.8 cm and taper downwards. The stamp bears a cursive *omega* and two lunate *sigma*. The name, which is Σῶσος in the nominative, is common in Chios<sup>73</sup>.

Date: 1<sup>st</sup> century BC/ 1<sup>st</sup> century AD.

**Τρύφωνος**<sup>74</sup> (*fig. 30*)

Rectangular with rounded ends stamp on an amphora handle with skin. The dimensions of the stamp are l: 3.3 cm, w: 1.1 cm, with a letter height of 0.3-0.7 cm. The cross-section of the handle is 3.4 x 2.7 cm. The name is Τρύφων in the nominative. The stamp bears a cursive *omega* and a retrograde "N." The name is very common in Chios<sup>75</sup>.

Date: 1<sup>st</sup> century AD.

**Χαρμίδου**<sup>76</sup> (*fig. 31*)

Rectangular with rounded ends stamps on amphorae handles, with skin. The dimensions of the stamps are l: 2.9 cm, w: 0.7 cm, with a letter height of 0.3-0.4 cm. The cross-section of the handles is 3.2 x 2.7 cm.

From the different form of the letters we presume that these stamps differ from the abbreviations XAP and the monograms X,A,P.

Date: 3<sup>rd</sup> century BC (?).

**Abbreviations**

Abbreviated names are very common. Some of them are identified with one name each and some others can be identified with more than one name.

**Αμυν(-)**

Rectangular with rounded ends stamps on amphorae handles, with skin. The dimensions of the stamps are l: 2.5 cm, w: 0.7 cm, with a letter height of 0.5 cm. The cross-section of the handles is 3.4 x 3.2 cm.

**Αμυ(-)**

Rectangular with rounded ends stamps on amphorae handles, with skin. The dimensions of the stamps are l: 2.6 cm, w: 0.9 cm, with a letter height of 0.8 cm. The cross-section of the handles is 3.6 x 3.3 cm.

The abbreviations Ἀμύν and Ἀμύ (*fig. 32*) could be identified with the name Ἀμύντας, which occurs on Chios<sup>77</sup>.

Date: 3<sup>rd</sup> century BC.

<sup>72</sup> SARIKAKIS 1989, p. 420, no 137

<sup>73</sup> SARIKAKIS 1989, p. 420

<sup>74</sup> SARIKAKIS 1989, p. 433, no 67

<sup>75</sup> MAVROGORDATOS 1916, p. 323, no 67; 1918, p. 75; LAGOS 1998, series 20, no 119

<sup>76</sup> SARIKAKIS 1989, p. 467, no 18

<sup>77</sup> SARIKAKIS 1989, p. 26, A 208

**Ἀσκλη(-).**<sup>78</sup> (fig. 33)

Rectangular stamp on an amphora handle. The dimensions of the stamp are pres. l: 3.5 cm, w: 0.9 cm, with a letter height of 0.45 cm. The cross-section of the handle is 3.2 x 2.95 cm.

It is possibly an abbreviation of the name *Ἀσκληπιάδης* or *Ἀσκληπιόδωρος*, two names that are common on the island of Chios.

Date: 3<sup>rd</sup>/2<sup>nd</sup> centuries BC.

**Εἰσι(-)**<sup>79</sup> (fig. 34)

Rectangular stamps, some with rounded ends, on amphorae and lagynos handles with thick skin. The dimensions of the stamps are l: 2.6 cm, w: 1.1 cm, with a letter height of 0.7 cm. The cross-section of the handles is 3.7 x 3.3 cm.

The stamps bear either the four barred or the lunate *epsilon*. One example bears a lunate *sigma*. They could be identified with the name *Εἰσίων* (=Ἰσίων) (*Εἰσίωνος* in the genitive) or with the name *Εἰσίδωρος* (=Ἰσίδωρος) (*Εἰσιδώρου* in the genitive).

Date: Late Hellenistic period. The stamps with the four barred *sigma* are dated to the late 3<sup>rd</sup> century BC and those with the lunate *sigma* belong possibly to a successor and are dated to the 2<sup>nd</sup> century BC.

**Εὐρυκρα(-), Εὐρυκρ(-) and Εὐρυκ(-)**

See *Εὐρυκράτου*.

**Ζωσίμο(υ)**<sup>80</sup> (fig. 35)

Shallow rectangular with rounded ends stamp on an amphora handle with thick white skin. The letter "Z" is retrograde, the *omega* is cursive, and the *sigma* is lunate. The dimensions of the stamp are l: 3.8 cm, w: 0.9 cm, with a letter height of 0.5 cm. The cross-section of the handle is 3.7 x 2.6 cm tapering downwards.

Date: 1<sup>st</sup> century BC/1<sup>st</sup> AD<sup>81</sup>.

**Θεμίσω(νος?)**<sup>82</sup> (fig. 36)

Rectangular retrograde stamps on amphorae handles, with whitish skin. They bear a lunate *epsilon* and *sigma* and a cursive *omega*. The dimensions of the stamps are l: 4.1 cm, w: 1.2 cm, with a letter height of 0.7 cm. The cross-section of the handles is 3.2 x 2.7 cm.

The name is *Θεμισίων* in the nominative (*Θεμισίωνος* in the genitive).

Date: 1<sup>st</sup> century AD.

<sup>78</sup> SARIKAKIS 1989, p. 79, A 626

<sup>79</sup> SARIKAKIS 1989, p. 251, I 81

<sup>80</sup> SARIKAKIS 1989, p. 193, no 87

<sup>81</sup> OPAITĪ & TSARAVOPOULOS 2010, p. 28; OPAITĪ & TSARAVOPOULOS 2011, p. 321, cat. 66, figs. 31 b, 34, 35.

<sup>82</sup> BOARDMAN 1967, p. 245, no 640; SARIKAKIS 1989, p. 216, Θ 11

**Θερσεῦ(ς)**<sup>83</sup> (*fig. 37*)

Rectangular stamps on amphorae handles, with whitish skin. The dimensions of the stamps are l: 2.5 cm, w: 0.7 cm, with a letter height of 0.6 cm. The cross-section of the handles is 3.3 x 2.9 cm.

The name is *Θερσης* in the nominative (*Θερσεῦς* in the genitive).

Date: late Hellenistic/early Roman period.

**Κρονη(-) and Κρο(-)**

See *Κρόνιος*.

**Λίχαν(τος)**<sup>84</sup> (*fig. 38*)

Rectangular with rounded ends stamp on an amphora handle with thick white skin. The dimensions of the stamp are l: 2.6 cm, w: 1.8 cm, with a letter height of 0.5 cm. The cross-section of the handle that narrows downwards is 3.4 x 4.2 cm.

It is an abbreviation of the name *Λίχαντος*, which is *Λίχας*<sup>85</sup> in the nominative, and not of the name *Λιχάνωρ*, which is not attested.

Date: 4<sup>th</sup> century BC.

**Μεν(-)**<sup>86</sup> (*fig. 39*)

Twenty five rectangular stamps on amphorae handles, with and without skin, bear a lunate "E," two bear a four barred "E," three bear the letter "N" reverse and four are retrograde with a lunate "E." In some cases, on amphorae handles, the letter "M" resembles the letter "H" and six examples have a reverse "N." The dimensions of the stamps are l: 3.2 cm, w: 0.9 cm, with a letter height of 0.6 cm. The cross-section of the handles is 3.9 x 3.3 cm tapering downwards.

Fewer examples come from lagynoi handles with skin. Two examples bear a four barred "E," five a lunate "E" and one has the letter "N" reverse. The letter "M" that resembles the letter "H" appears on six lagynoi handles with a lunate "E." The dimensions of the stamps are l: 3.1 cm, w: 1 cm, with a letter height of 0.7 cm. The cross-section of the handles is 3 x 1.6 cm.

They could be identified with the name *Μένων* (which is *Μένωνος* in the genitive), but also with the names *Μενεσθεῦς*<sup>87</sup>, *Μενεκράτης*, *Μενεκλής*<sup>88</sup>. They are one of the most often found abbreviations on the island of Chios. The shape of the stamp varies, as well as the form of the letter "M" that sometimes resembles the letter "H", the form of the letter "E" that can be found either four barred or lunate, and last, the form of the letter "N" that is found also retrograde. The majority of these stamps come from the southern part of the modern city of Chios

<sup>83</sup> MAVROGORDATOS 1916, p. 310, no 62a; SARIKAKIS 1989, p. 234, Θ 113; LAGOS 1998, series 17, no 39

<sup>84</sup> GRACE & SAVVATIANOU-PETROPOULAKOU 1970, p. 370, E 225; SARIKAKIS 1989, p. 293, M 74

<sup>85</sup> LGPN 1, p. 289

<sup>86</sup> SARIKAKIS 1989, p. 310, M 70; LAGOS 1998, series 17, no 47

<sup>87</sup> LAGOS 1998, Series 17, no 47

<sup>88</sup> LAGOS 1998, Series 18 & 19, nos 95, 96

and it seems very likely that the pottery workshops in the Hellenistic and Roman periods were located in that region.

Date: 3<sup>rd</sup> and 2<sup>nd</sup> centuries BC.

**Μενω(-)**<sup>89</sup> (*fig. 39*)

Rectangular stamps on lagynoi and amphora handles with skin. A lagynos stamp is found on two lines, with a lunate “E” and a reverse “N.” The dimensions of the lagynoi and the amphora stamps are l: 4.2 cm and 2.9 cm, w: 1.1 cm and 0.6 cm, with a letter height of 0.7 cm and 0.5 cm respectively. The cross-section of the handles is 3 x 2 cm and 3.7 x 3 cm respectively.

The letter *omega* can be found capital or cursive on both lagynoi and amphora handles. They are identified with the name *Μένων*, which is *Μένωνος* in the genitive.

Date: 3<sup>rd</sup>/2<sup>nd</sup> centuries BC.

**Ξενοκλ(-)** (*fig. 40*)

Rectangular stamp on an amphora handle with dark skin. The dimensions of the stamp are l: 2.5 cm, w: 0.8 cm, with a letter height of 0.4 cm. The cross-section of the handle is 3.9 x 3.3 cm.

It could be identified with the names Ξενοκλῆς, Ξενοκλείδης, Ξενοκλειτος<sup>90</sup> etc.

Date: 3<sup>rd</sup> century BC.

**Τιμ(-)** (*fig. 41*)

Rectangular stamps on amphora handles, with skin. The dimensions of the stamps are l: 2 cm, w: 1 cm, with a letter height of 0.3-0.5 cm. The cross-section of the handles is 3.5 x 3.3 cm tapering downwards.

They could be identified with a wide range of different names<sup>91</sup>, such as Τιμανδρος, Τιμοδάμας, Τιμοκλῆς, Τίμων<sup>92</sup>.

Date: 3<sup>rd</sup>/ 2<sup>nd</sup> centuries BC.

**Χαο(-)**<sup>93</sup> (*fig. 42*)

Rectangular with rounded ends stamps on amphorae handles, with skin. The dimensions of the stamps are l: 2.1 cm, w: 1.2 cm, with a letter height of 0.8 cm. The cross-section of the handles is 3.4 x 3 cm.

This is possibly an abbreviation of the name *Χαρμίδου* (see above).

<sup>89</sup> ETIENNE & BRAUN 1986, no 249; SARIKAKIS 1989, p. 317, M 122; ARIEL 1990, S 455; BÖRKER 1998, nos 567-568, 576-605, 648- 650; PALACZYK & SCHÖNENBERGER 2003, no 186

<sup>90</sup> SARIKAKIS 1989, p. 352, Ξ 6

<sup>91</sup> SARIKAKIS 1989

<sup>92</sup> MAVROGORDATOS 1916, nos 41-44

<sup>93</sup> SARIKAKIS 1989, p. 465, X 4

### Monograms

There are monograms that are identified with a particular name each. There are also monograms that can be identified with a wide range of names and others that are difficult to decipher.

**ΔΕΡ**<sup>94</sup> **ΔΞ** (fig. 43)

Rectangular with rounded ends stamps on amphorae handles with skin. The dimensions of the stamps are l: 2.1, w: 1.9 cm, with a letter height of 0.6 cm. The diameter of the handles is 3 cm. They could be identified with the name *Δέρκυλος*, which is a common name on the island<sup>95</sup>.

Date: late 4<sup>th</sup> century BC.

**ΚΡ**

See *Κρόνιος*

**ΠΑ**<sup>96</sup> **Π** (fig. 44)

Rectangular with rounded ends and circular stamps on amphorae and lagynoi handles with and more rarely without skin. The dimensions of the stamps are l: 2.5 cm, w: 0.9 cm, diam.: 1.3 cm, with a letter height of 0.7 and 0.5 cm respectively. The cross-section of the amphorae handles is 3.3 x 3.1 cm tapering downwards. The cross-section of the lagynoi handles is 2.9 x 1.4 cm.

**ΠΑΡ**<sup>97</sup> **Π** **Ρ** **Α** (fig. 45)

Rectangular with rounded ends and circular stamps on amphorae and lagynoi handles with skin. The dimensions of the stamps are l: 2 and 1.4 cm, w: 1.4 and 1 cm, diam.: 1.9 cm, with a letter height of 0.9 and 0.6 cm respectively. The cross-section of the amphorae and lagynoi handles is 3.3 x 2.7 cm and 3 x 1.3 cm respectively.

Dating: second half of the 3<sup>rd</sup> century BC and 2<sup>nd</sup> century BC.

The monograms **ΠΑ** and **ΠΑΡ** are stamped on amphorae and lagynoi handles. They could be identified with a wide range of names<sup>98</sup>. The shape of the stamps varies as well as the position of the letter "P" and the form of the letter "A," from which a late dating can be given to a number of stamps.

<sup>94</sup> SARIKAKIS 1989, p. 105, Δ 20; ARIEL & FINKIELSZTEJN 1994, SAH 135

<sup>95</sup> MAVROGORDATOS 1916, p. 318, no 66c; 1918, p. 74; LAGOS 1998, series 18 & 19, no 74

<sup>96</sup> CANARACHE 1957, no 819; SZTETYŁŁO 1983, no 378; COJA 1986, p. 444; ETIENNE & BRAUN 1986, no 252; SARIKAKIS 1989, p. 363, Π 3; ARIEL & FINKIELSZTEJN 1994, p. 231, SAH 134 (ROM 1B); BÖRKER 1998, nos 639-640

<sup>97</sup> BOARDMAN 1956, no 13; GRACE 1956, p. 167, no 203 (AH 129); GRACE & SAVVATIANOU-PETROPOULAKOU 1970, E 235; ETIENNE & BRAUN 1986, no 253; SARIKAKIS 1989, p. 367, Π 27; BÖRKER 1998, nos 785-786; FINKIELSZTEJN 2000, p. 210-211, pl. 109 f-h

<sup>98</sup> SARIKAKIS 1989, p. 366-369

XAP<sup>99</sup> X X X (fig. 46)

Round, square and oval stamps on lagynos and amphorae handles with skin. The diameter of the round stamps is 1.3 cm. The dimensions of the square stamps are 1.4 x 1.4 cm and of the oval stamps are 1.3 x 1.5 cm. The height of the letters is between 0.6 and 0.9 cm. The cross-section of the handles is 2.8 x 1.6 cm.

The loop of the letter "P" is placed either to the right, to the left or inside the letter "X." Grace, however, has suggested that Chian stamps have the "P" loop towards the right, instead of to the left of the letter "X."<sup>100</sup> It can be seen from our sample, however, that Chian stamps can have the "P" loop either towards the left or to the right of the letter "X." They are possibly an abbreviation of the name *Χαρμίδης* (see above).

Date: 2<sup>nd</sup>/1<sup>st</sup> century BC.

**Unidentified** (fig. 47)

Oval stamps on amphorae handles with white skin. The dimensions of the stamps are l: 2 cm, w: 1.5 cm. The diameter of the handles cross-section is 3.4 cm, tapering downwards (to 2.8 cm).

### Conclusion

As shown, some stamp names appear more often than others on the amphorae and lagynoi from Chios and of those found in the consuming sites. The question we will try to answer, after we complete our study of all the available material, is why this happens. Is it a matter of increased production during certain periods, when Chios enjoyed political and other privileges that allowed exports to rise? Or is it a matter of the lack of information that prevents the identification of names? This would then show that Chios probably had a constant and continuous export trade, something quite likely due to its strategic position between the eastern Mediterranean and the Black Sea.

We hope that the publication of this collection has increased the knowledge concerning Chian stamps in connection to Chian trading ventures of the past. We also expect the forthcoming finds from the Black Sea region to further enrich the Chian stamps record.

<sup>99</sup> GRACE 1956, p. 172, no 220 (AH 31), pl. 76; GRACE & SAVVATIANOU-PETROPOULAKOU 1970, p. 362, E 234, pl. 60; BUZOIANU 1979, no 55; SZTETYŁŁO 1983, no 352; PANAS & PONTES 1998, no 102

<sup>100</sup> GRACE & SAVVATIANOU-PETROPOULAKOU 1970, p. 362

## CATALOGUE OF NAMES

Name	Examples	Shape of stamp	Date
Αθηναγόρας	1	rectangular	late 3 <sup>rd</sup> /early 2 <sup>nd</sup> century BC
Αθηναῖος	2	rectangular with rounded ends	2 <sup>nd</sup> century BC
Αλκίμαχος	5	rectangular	4 <sup>th</sup> century BC
Αμύντας abbr. Αμυν(-) and Ἄμυ (-)	9	rectangular with rounded ends	3 <sup>rd</sup> century BC
Ἀπελλῆς	4	rectangular	2 <sup>nd</sup> century BC
Ἀπολλωνίδης	2	rectangular with rounded ends on two lines	2 <sup>nd</sup> century BC
Ἀπολλώνιος	1	rectangular with rounded ends on two lines	2 <sup>nd</sup> century BC
Ἀριστομένης with vine leaf	1	round	2 <sup>nd</sup> century BC
Ἀρτεμᾶς	2	rectangular	1 <sup>st</sup> century BC
Ἀσκλη[πιάδης] ? or Ἀσκλη[πιόδωρος]	1	rectangular	3 <sup>rd</sup> / 2 <sup>nd</sup> centuries BC
Βότρως	1	round retrograde on two lines	2 <sup>nd</sup> century BC
Δημόκριτος	1	rectangular with rounded ends	1 <sup>st</sup> century BC/1 <sup>st</sup> century AD
ΔΕΡ monogram identified with the name Δέρκυλος	3	rectangular with rounded ends	late 4 <sup>th</sup> century BC
Εἰσίων (=Ἰσίων?)	4 (1 on lagynos)	rectangular and rectangular with rounded ends	late Hellenistic period, late 3 <sup>rd</sup> and 2 <sup>nd</sup> centuries BC
Ἑρμίας	2	rectangular retrograde	1 <sup>st</sup> century BC/1 <sup>st</sup> century AD

Εὔβουλος	1	rectangular with rounded ends	1 <sup>st</sup> century BC/1 <sup>st</sup> century AD
Εὐρυκράτης	16 (1 on lagynos)	rectangular with rounded ends	2 <sup>nd</sup> /1 <sup>st</sup> centuries BC
Εὐρυκράτης ὁ Μαχίου	3	rectangular on two lines	2 <sup>nd</sup> /1 <sup>st</sup> centuries BC
Ζώσιμος	1	rectangular with rounded ends	2 <sup>nd</sup> century AD
Ἥγησίας	15	rectangular	c. 200 BC
Ἡρακλεΐδης	1	rectangular	1 <sup>st</sup> century BC
Ἡρακλέων	1	rectangular on two lines	1 <sup>st</sup> century BC
Θεμισῶν	4	rectangular retrograde	1 <sup>st</sup> century AD
Θερσηῆς	2	rectangular	late Hellenistic/ early Roman period
Ἰκέσιος	23 (one on lagynos)	rectangular and oval	3 <sup>rd</sup> century BC
Κρόνιος abbr. Κρονη(-), Κρο(-), Κρ(-)	16 (7 on lagynoi)	rectangular, square and round	2 <sup>nd</sup> / 1 <sup>st</sup> centuries BC
Λίχας	1	rectangular with rounded ends	4 <sup>th</sup> century BC
Μεν	65 (14 on lagynoi)	rectangular	3 <sup>rd</sup> and 2 <sup>nd</sup> centuries BC
Μένων abbr. Μενω(-)	3 (2 on lagynoi)	rectangular	3 <sup>rd</sup> and 2 <sup>nd</sup> centuries BC
Νεικηφόρος (Νικηφόρος)	1	rectangular with rounded ends	late 2 <sup>nd</sup> century BC
Ξενοκλ(-)	1	rectangular	3 <sup>rd</sup> century BC
ΠΑ monogram	13 (4 on lagynoi)	round and rectangular with rounded ends	3 <sup>rd</sup> and 2 <sup>nd</sup> centuries BC
ΠΑΡ monogram	11 (2 on lagynoi)	round and rectangular with rounded ends	3 <sup>rd</sup> and 2 <sup>nd</sup> centuries BC

Ποσειδώνιος with sphinx	2	round	270-220 BC
Ῥῆσις	1	round	3 <sup>rd</sup> century BC
Σύνετος	1	rectangular	second half of the 3 <sup>rd</sup> century AD
Σώζων	2	rectangular	late 2 <sup>nd</sup> /early 3 <sup>rd</sup> centuries AD
Σῶσος	2	rectangular with rounded ends	1 <sup>st</sup> century BC/ 1 <sup>st</sup> century AD
Τιμ(-)	3	rectangular	3 <sup>rd</sup> / 2 <sup>nd</sup> centuries BC
Τρύφων	1	rectangular with rounded ends	1 <sup>st</sup> century AD
ΧΑΡ monogram identified with the name Χαρμίδης	9 (1 on lagynos)	round, square and oval	2 <sup>nd</sup> /1 <sup>st</sup> century BC
Χαρ(μίδης)	6	rectangular with rounded ends	3 <sup>rd</sup> century BC
Χαρμίδης	8	rectangular with rounded ends	3 <sup>rd</sup> century BC

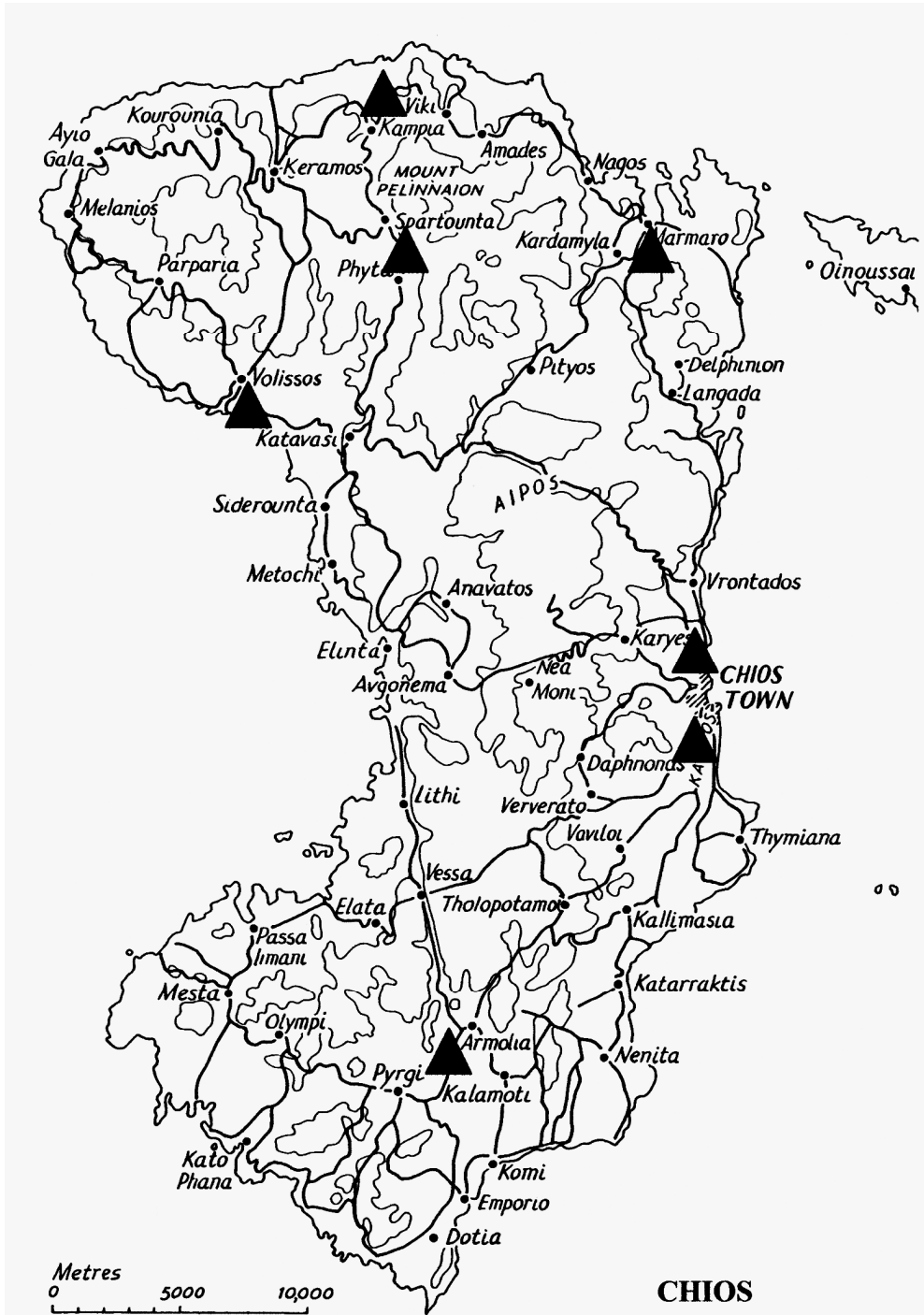


Fig. 1 – Map of the island of Chios with the position of the ceramic workshops (based on YALOYRIS 1986, map 7).

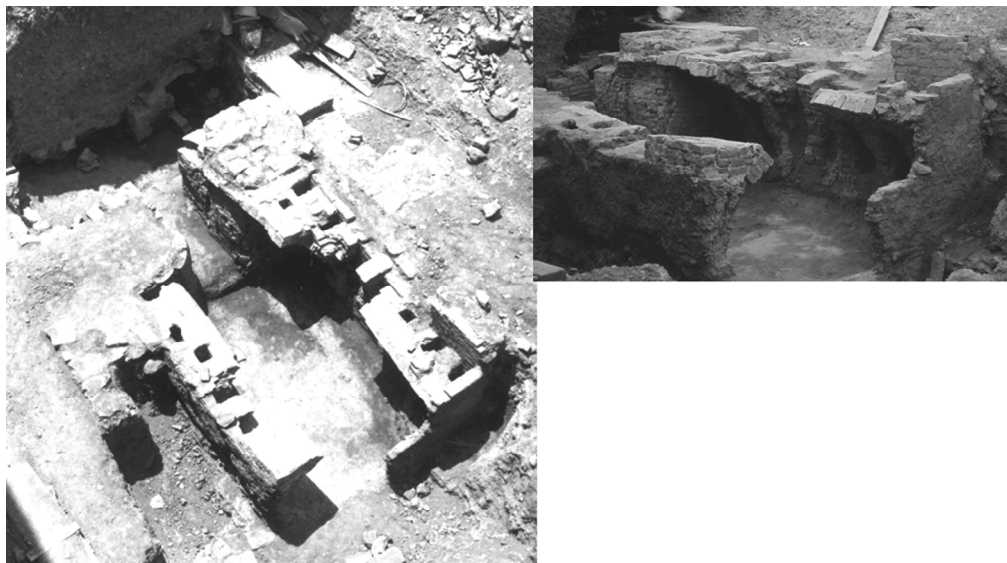


Fig. 2 – General and detail of the amphora kiln in the south of the city of Chios.

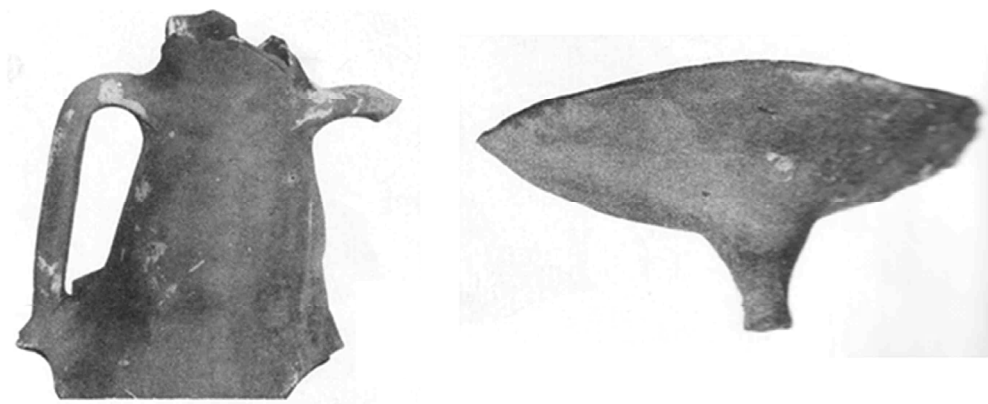


Fig. 3 – The amphorae produced in the ceramic kiln.

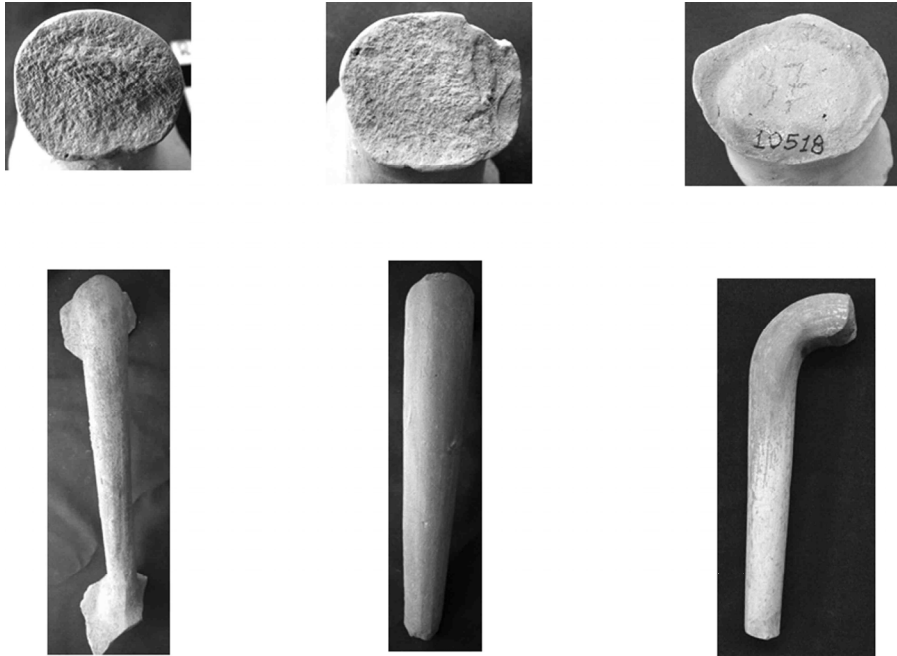


Fig. 4 – Amphora handles from Chios.



Fig. 5 – Chian amphora of the 3<sup>rd</sup> century BC.

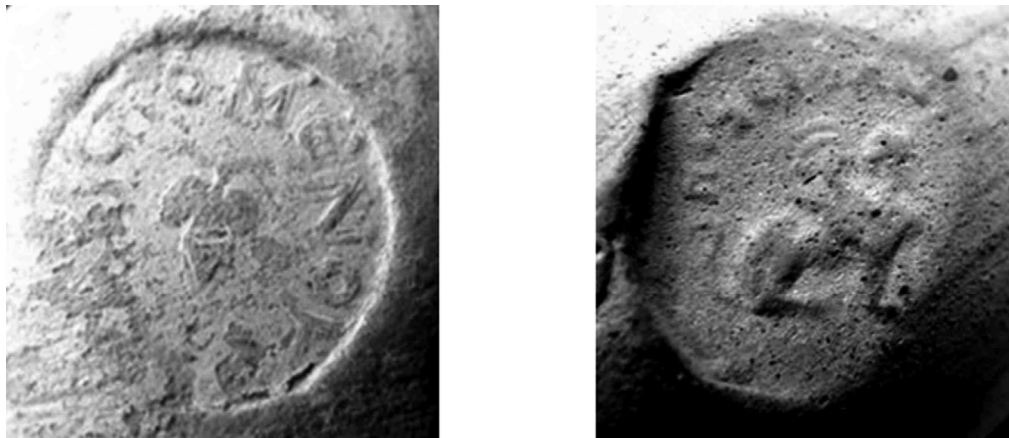


Fig. 6 – Chian stamps with symbolic motifs.



Fig. 7 – Chian stamp with the name *Αθηναγόρας*.



Fig. 8 – Chian stamp with the name *Αθηναίος*.



Fig. 9 – Chian stamp with the name *Ἀλκίμαχος*.

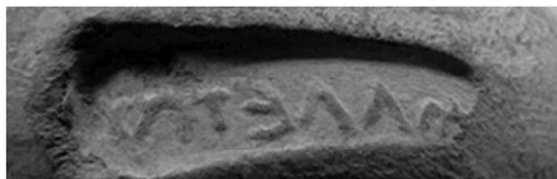


Fig. 10 – Chian stamps with the name *Ἀπελλῆς*.



Fig. 11 – Chian stamp with the name *Ἀπολλωνίδης*.



Fig. 12 – Chian stamp with the name *Απολλώνιος*.



Fig. 13 – Chian stamp with the name *Αρτεμῆς*.



Fig. 14 – Chian round stamp with the name *Βότρυς*.



Fig. 15 – Chian stamp with the name *Δημόκριτος*.



Fig. 16 – Chian stamp with the name *Ἑρμίας*.



Fig. 17 – Chian stamp with the name *Εὔβουλος*.



Fig. 18 – Chian stamps with the name *Εὐρυσκράτης*.



Fig. 19 – Chian stamp with the name and the patronymic *Εὐρυσκράτης ὁ Μαχίου*.

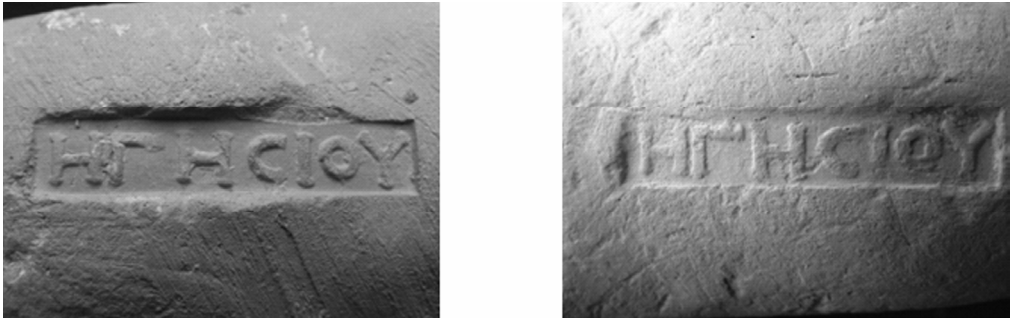


Fig. 20 – Chian stamps with the name *Ηγησίας*.



Fig. 21 – Chian stamp with the name *Ηρακλείδης*.



Fig. 22 – Chian stamp with the name *Ηρακλέων*.

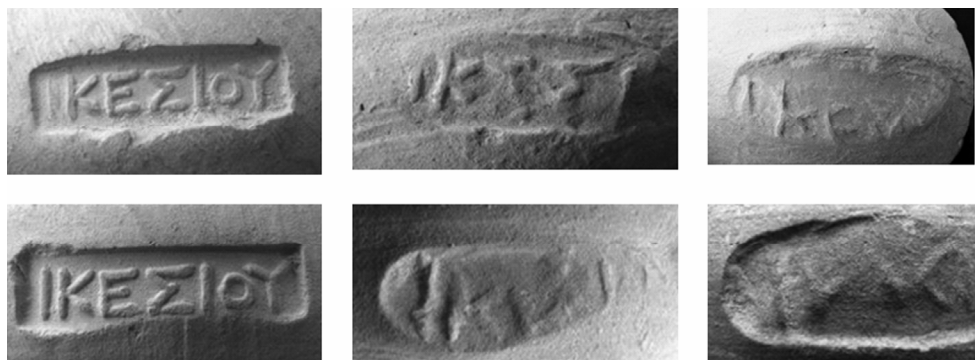


Fig. 23 – Chian stamps with the name *Ἰκέσιος*.



Fig. 24 – Chian stamps with the name *Κρόνιος* complete, abbreviated, and monogrammed.



Fig. 25 – Chian stamp with the name *Νεικηφόρος*.



Fig. 26 – Chian stamp with the name *Ῥῆσις*.



Fig. 27 – Chian stamp with the name *Σύνετος*



Fig. 28 – Chian stamps with the name *Σώζων*.



Fig. 29 – Chian stamp with the name *Σῶσος*.



Fig. 30 – Chian stamp with the name *Τρύφων*.



Fig. 31 – Chian stamp with the name *Χαρμίδης*.



Fig. 32 – Chian stamps with the abbreviations of the name *Αμόντας*.



Fig. 33 – Chian stamp with the abbreviation *Ασκλη(-)*.

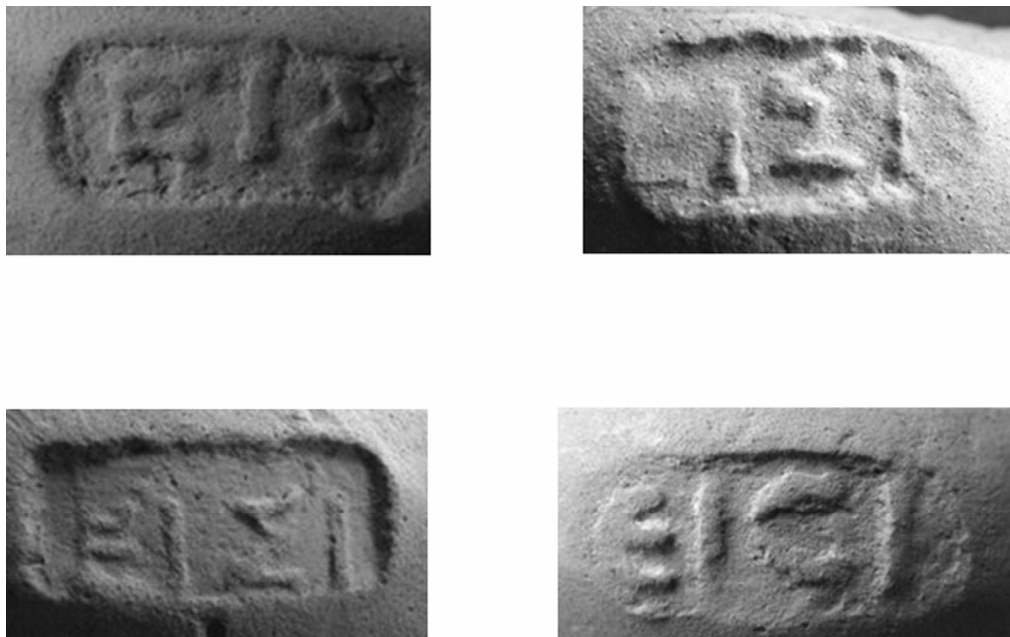


Fig. 34 – Chian stamps with the abbreviation *Είσι(-)*.



Fig. 35 – Chian stamp with the name *Ζώσιμος*.

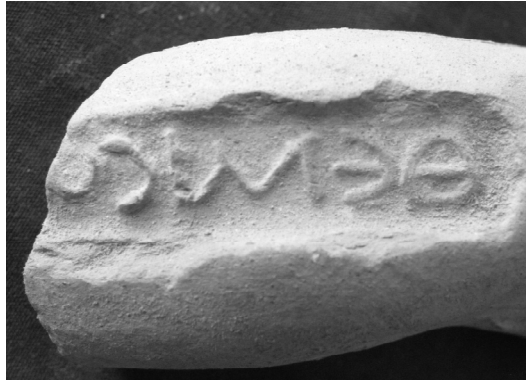


Fig. 36 – Chian stamp with the abbreviation of the name *Θεμίσων*.



Fig. 37 – Chian stamp with the abbreviation of the name *Θερσης*.



Fig. 38 – Chian stamps with the abbreviation of the name *Λίχας*.



Fig. 39 – Chian stamps with the abbreviations *Μεν(-)* and *Μενω(-)*



Fig. 40 – Chian stamp with the abbreviation *Ξενοκλ(-)*.



Fig. 41 – Chian stamp with the abbreviation *ΤΙ(-)*.



Fig. 42 – Chian stamps with the abbreviation *ΧΑΡ(-)*.



Fig. 43 – Chian stamps with the monogram *ΔΕΡ*.

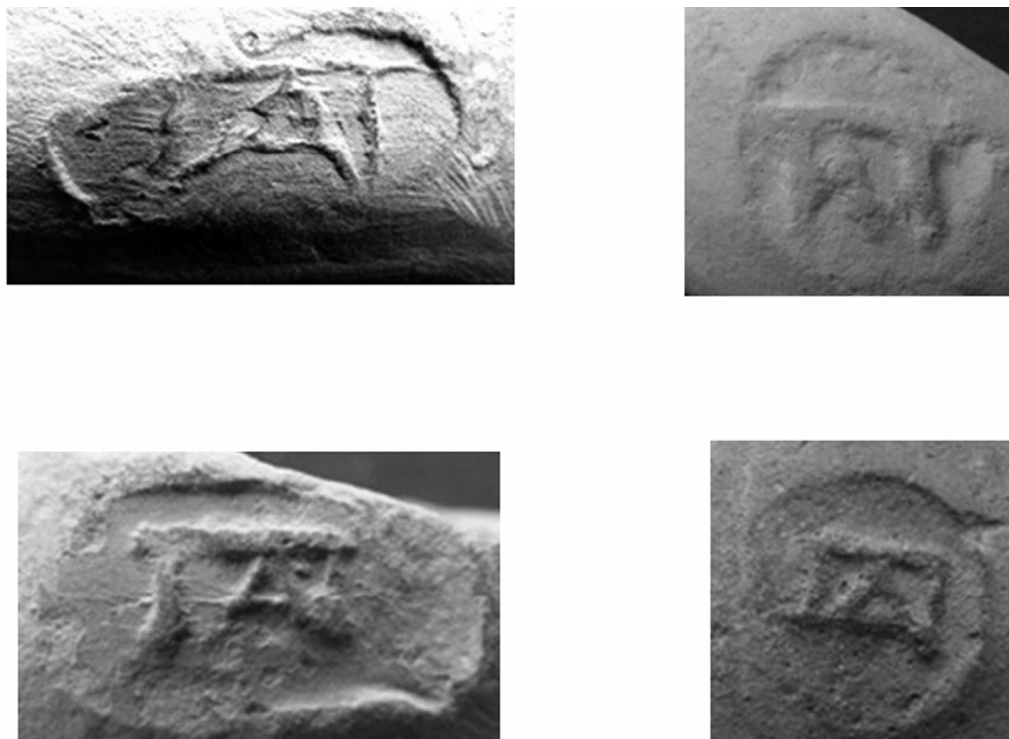


Fig. 44 – Chian stamps with the monogram ΠΑ.

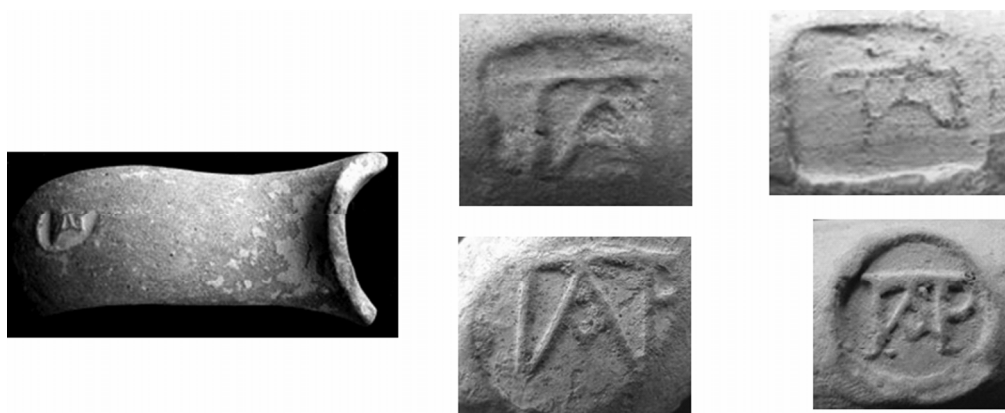


Fig. 45 – Chian handle and stamps with the monogram ΠΑΡ.

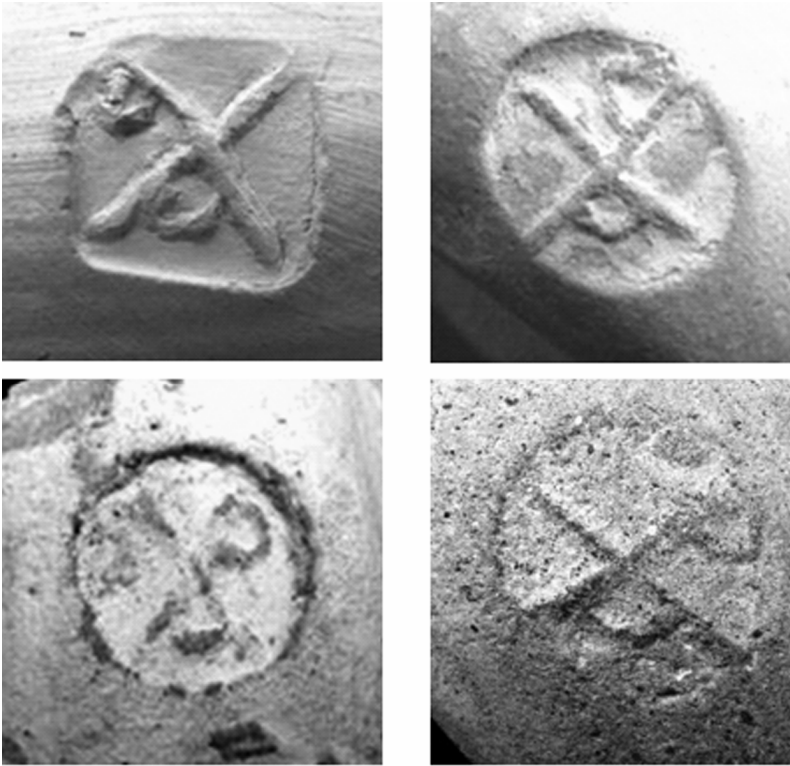


Fig. 46 – Chian stamps with the monogram *XAP*.



Fig. 47 – Chian stamps with unidentified patterns.