

## ARCHAEOLOGICAL EXCAVATIONS AT CAPE CHIRAKMAN / BIZONE, KAVARNA 2016–2021

Velislav BONEV\*  
Elena VASILEVA\*  
Kalin MADZHAROV\*  
Yana DIMITROVA\*  
Rosen PEEVSKI\*

**Cuvinte-cheie:** *săpături arheologice, necropole, monede, ștampile amforice, locuințe medievale târzii.*

**Keywords:** *excavations, necropolis, coins, amphora stamps, Late Medieval premises.*

**Rezumat:** *În acest articol sunt publicate rezultatele și o serie de descoperiri din complexele arheologice cercetate integral la Capul Chirakman, precum și monede și ștampile amforice dobândite în timpul săpăturilor arheologice din ultimii șase ani. Așezarea antică Bizone este situată în zona portuară a orașului actual Kavarna. Este situat pe un platou cu pante extrem de abrupte cunoscut sub numele de Capul Chirakman. În antichitate, lungimea sa era mai mare. Cu toate acestea, un cutremur puternic din secolul I a.Chr. a dus la prăbușirea părții sale de sud-est în mare. Momentul și modul în care a fost creat orașul Bizone rămân neclare. Numele Bizone a fost menționat pentru prima dată într-un decret din Histria în cinstea lui Agathocles, datând din anul*

---

\* Velislav BONEV: Sofia University 'St. Kliment Ohridski', 15 Tsar Osvoboditel Blvd, 1000 Sofia, velislav.bonev@abv.bg – *History of the archaeological research; Late Medieval features.*

\* Elena VASILEVA: National Archaeological Institute with Museum – Bulgarian Academy of Sciences, 2 Saborna Str., 1000 Sofia, helengnom@gmail.com – *History of the archaeological research; Late Medieval features; Necropolis*

\* Kalin MADZHAROV: National Archaeological Institute with Museum – Bulgarian Academy of Sciences, 2 Saborna Str., 1000 Sofia, kalin.madzharovv@gmail.com – *Amphora stamps.*

\* Yana DIMITROVA: National Archaeological Institute with Museum – Bulgarian Academy of Sciences, 2 Saborna Str., 1000 Sofia, yanadimitr@yahoo.com – *Tables and drawings.*

\* Rosen PEEVSKI: National Museum of History, 16 Vitoshko Lale Str., 1618 Sofia, rokcacster@gmail.com – *Coins.*

200 a.Chr. Chiar dacă s-au descoperit materiale din perioade anterioare, cea mai importantă dezvoltare a orașului Bizone a fost probabil în epoca elenistică. După cutremur, în epoca romană, așezarea a fost refăcută sub același nume. Vremurile tulburi ale secolului al VI-lea au forțat populația așezării să se retragă din nou pe platou. Căderea cetății ar trebui să fie datată din secolul al VI-lea și atribuită marilor invazii avaro-slave. În Evul Mediu așezarea a fost refăcută sub numele de Karvuna și s-a dezvoltat semnificativ. În secolele XIII-XIV, a atins cel mai înalt nivel de prosperitate sub stăpânirea despoților locali Balik și Dobrotitsa.

Cercetarea se axează pe complexele încadrate cronologic în cea mai recentă perioadă de locuire la Capul Chirakman, perioada de la sfârșitul secolului al XIV-lea până la sfârșitul secolului al XV-lea. Patru locuințe din această perioadă au fost studiate integral. Toate au fost studiate integral și au caracteristici similare. Toate sunt săpate în pământ, pereții lor sunt cu o singură față și din pietre de carieră de diferite dimensiuni, lipite cu pământ. În interior au fost găsite numeroase obiecte legate de viața de zi cu zi a locuitorilor. În unele din locuințe, ziduri din epocile anterioare au fost refăcute și/sau adăugate și astfel utilizate pentru construirea altora noi. Au fost excavate mai multe gropi din Evul Mediu târziu și au fost excavate, de asemenea, 17 morminte din Evul Mediu târziu. Două dintre ele au fost găsite în interiorul uneia dintre locuințele excavate, iar celelalte aparțin unei necropole care se află la nord de bazilică și probabil parte a necropolei studiate în ultimii ani.

**Abstract:** In this article are published the results and selected finds from the fully studied features on Cape Chirakman, as well as coins and amphora stamps acquired during the archaeological excavations in the last six years. The ancient settlement of Bizone is located in the port area of the present-day town of Kavarna. It is located on a plateau with immensely steep slopes known as Cape Chirakman. In ancient times, its length was greater. However, a strong earthquake in the 1<sup>st</sup> century BC led to the collapse of its southeastern part in the sea. The time and manner in which Bizone was created remain unclear. The name Bizone was first mentioned in a decree from Histria in honor of Agathocles, dating back to 200 BC. Despite the discovery of material from earlier periods,<sup>1</sup> Bizone's best development was probably in the Hellenistic age. After the earthquake, in Roman epoch, the settlement was restored under the same name. The turbulent times of the 6<sup>th</sup> century forced the population of the settlement to retreat to the plateau again. The fall of the fortress should be dated back to the 6<sup>th</sup> century and attributed to the great Avar-Slavic invasions. During the Middle Ages, the settlement was restored under the name Karvuna and it developed significantly. In the 13<sup>th</sup> – 14<sup>th</sup> century, it reached its highest level of prosperity under the rule of the local despots Balik and Dobrotitsa.

The research is focused on features that chronologically refer to the latest inhabitation of Cape Chirakman, the period from the end of the 14<sup>th</sup> to the end of the 15<sup>th</sup> century. Four dwellings from this period have been fully studied. They all have similar characteristics. All of them are dug into the ground, their walls are single-faced and made of quarry stones of different sizes bounded with clay. Numerous objects related to the daily life of the people who inhabited them were found inside. In some of the dwellings,

---

<sup>1</sup> LAZAROV 2000, p. 32-33; MIRCHEV et alii 1962, p. 32-34; LAZAROV 1998, p. 93; SALKIN 1986, p. 251; THEODOSIEV 1994, p. 109.

walls from earlier periods had been rebuilt and/or added and thus used for the construction of new ones. Several Late Medieval pits were excavated and 17 Late Medieval graves have been excavated as well. Two of them were found inside one of the excavated dwellings, and the others belong to a necropolis which is located to the north of the basilica and probably part of the necropolis studied in recent years.

### History of the archaeological research

Today, the ancient settlement of Bizone is located in the port area of the present-day town of Kavarna (**Fig. 1**)<sup>2</sup>. It is located on a plateau with immensely steep slopes known as Cape Chirakman. In ancient times, its length was greater. However, a strong earthquake in the 1<sup>st</sup> century BC led to the collapse of its southeastern part in the sea<sup>3</sup>. From the northwest, the cape is connected to the peninsula by a narrow strip of land.

The time and manner in which Bizone was created remain unclear. Ancient authors were unaware of this as well. One version suggests that the settlement was founded by a local, pre-Greek population. Another possibility is that its emergence is related to the colonial policy of Mesambria in the time around or shortly after the middle of the 5<sup>th</sup> century BC<sup>4</sup>. The name Bizone was first mentioned in a decree from Histria in honor of Agathocles, dating back to 200 BC. It is about the Thracian leader Zoltes, who reached Bizone during attacks on the Greek colonies along the coast of Dobrudzha. The origin of the settlement and the character of its inhabitants have been discussed in scientific literature<sup>5</sup>. Despite the discovery of material from *earlier periods*<sup>6</sup>, Bizone's peak was probably in the Hellenistic period. The lack of major architectural remains on the cape plateau that can be associated with this epoch is explained by the fact that the settlement was located in the easternmost part of Cape Chirakman, which later collapsed into the sea. The results of the underwater studies of the cape area further support this theory<sup>7</sup>. However, recent fieldwork results show that the layers of the Hellenistic period may not have been revealed in the previous archaeological excavations. This is supported by: a collective find of gold staters dating back to the end of the 2<sup>nd</sup> century BC<sup>8</sup>; a treasure consisting of gold objects<sup>9</sup>; a large number of burial mounds; the results of the few excavated burial sites in the region and the discovered finds.<sup>10</sup> In the 1<sup>st</sup> century BC, a catastrophic earthquake

<sup>2</sup> Map. Dobrudzha in the 12<sup>th</sup> – 1<sup>st</sup> century BC, after TODOROVA *et alii* 2011, p. 170.

<sup>3</sup> CHRISTOSKOV *et alii*. 1995, p. 914-918.

<sup>4</sup> BOSHNAKOV 2004, p. 186.

<sup>5</sup> BOBCHEVA 1973, p. 38-40; VASILEV 1985, p. 13-16; MIRCHEV *et alii* 1962, p. 21-23.

<sup>6</sup> LAZAROV 2000, p. 32-33; MIRCHEV *et alii* 1962, p. 32-34; LAZAROV 1998, p. 93; SALKIN 1986, p. 251; THEODOSIEV 1994, p. 109.

<sup>7</sup> MIRCHEV *et alii* 1962, p. 81-82; POROZHANOV 1989, p. 8; POROZHANOV *et alii* 2006, p. 248-251; SALKIN 1987, p. 281; SALKIN 1996, p. 114; SALKIN & ANGELOVA 1988, p. 225; SALKIN & ORACHEV 1989, p. 172; SALKIN & GEORGIEV 2004, p. 119-120; SALKIN & GEORGIEV 2006, p. 254-255; TONCHEVA 1964.

<sup>8</sup> YOUROUKOVA 1977, p. 113-114.

<sup>9</sup> MINCHEV 1980, p. 15-19; MINČEV 1980.

<sup>10</sup> BOBCHEVA & SALKIN 1973; KITOV 1973, p. 37; KITOV *et alii* 1987, p. 101; KITOV 1990; KUZMANOV & SALKIN 1981, p. 118; LAZARENKO 2006, p. 223-225; LAZARENKO *et alii* 2007,

engulfs part of the ancient city when the front of the cape was torn off. Bizone is mentioned as one of the conquered settlements during the march of Lucullus on the Black Sea coast in 72 BC.

During the Roman period, the settlement was restored under the same name. However, it was located at the coastal part and flourished quickly<sup>11</sup>. The settlement was revived and the port began to operate again, as evidenced by the discovered remains in the coastal part of the present-day city<sup>12</sup>. However, the turbulent times of the 6<sup>th</sup> century forced the population of the settlement to retreat to the plateau again. There, a three-nave early Byzantine basilica with narthex and exonarthex was built. According to a Greek inscription found in the valley, it was probably dedicated to 'St. St. Kozma and Damyán'. To the north of the basilica, a study of a large building dated to the Late Antique period has begun and medieval layers have been discovered as well<sup>13</sup>. To the north of the gate, outside the fortress, in the direction of the village of Bozhurets, an embankment and an observation mound were discovered, most likely from the Middle Ages. To the south of the embankment, there is a partially excavated necropolis dated to the Late Antique period, partially overlapping with several tombs from the Hellenistic period. The graves are oriented in a direction from west to east, with graves without inventory predominating. The only exception is a grave of an adult individual with a cranial deformity and an inventory consisting of a belt set found between the legs, and a double-sided, finely crafted three-part bone comb. It is probably a person of Gothic or Sarmatian origin. The fall of the fortress should be dated back to the 6<sup>th</sup> century and attributed to the great Avar-Slavic invasions of 586–587<sup>14</sup>.

During the Middle Ages, the settlement was restored under the name Karvuna and it developed significantly. In the 13<sup>th</sup>–14<sup>th</sup> century, it reached its highest level of prosperity under the rule of the local despots Balik and Dobrotitsa. The fortress wall has been partially rebuilt, although it mainly follows the outlines of the earlier Byzantine one, as the area of the settlement was reduced significantly. The largest Late Medieval Christian necropolis was located and partially studied on the cape. More than 900 graves with a rich burial inventory have been examined from it<sup>15</sup>. The fortification system and its various alterations over the centuries have been discussed in detail in the scientific literature<sup>16</sup>. The main fortification system dates back to the Early Byzantine era, and its construction should be deemed as of late 4<sup>th</sup> – early 5<sup>th</sup> century. The gate with a rectangular tower to which a guard room is attached was located to the south<sup>17</sup>. The fortress wall covers the whole side of the land. On the way

---

326-329; SALKIN 1982, p. 32; SALKIN 1984; SALKIN 1986, p. 253-255; SALKIN 1989; TONCHEVA & RAFAILOV 1980.

<sup>11</sup> VASILEV 1985, p. 14-15; MIRCHEV *et alii* 1962, p. 22-23; TORBATOV 2002, p. 242.

<sup>12</sup> BOBCHEVA 1973, p. 39-40; MIRCHEV *et alii* 1962, p. 21-22.

<sup>13</sup> BOBCHEVA 1973, p. 39; VASILEV 1985, p. 19-20; MIRCHEV *et alii* 1962, p. 28-31.

<sup>14</sup> VASILEV 1985, p. 19; MIRCHEV *et alii* 1962, p. 83.

<sup>15</sup> VASILEV *et alii* 1977, p. 135; VASILEV *et alii* 1978, p. 137-138; VASILEV *et alii* 1979, p. 183-184; VASILEV *et alii* 1981, p. 153-154; CHOLAKOV *et alii* 1982, p. 109.

<sup>16</sup> VASILEV 1985, p. 18-20; MIRCHEV *et alii* 1962, p. 27-31, 36-64; TORBATOV 2002, p. 244-250.

<sup>17</sup> VASILEV 1985, p. 18-19; TORBATOV 2002, p. 249-250.

to the gate from the north, a preserved section of the second fortress wall was discovered during excavations in 2005<sup>18</sup>.

Some of the materials discovered during the archaeological excavations at Cape Chirakman are published, and the large collection of amphora stamps from the Hellenistic period is currently being processed<sup>19</sup>.

Archaeological excavations at Cape Chirakman began in 1929 and continued until 1933. They were led by O. Mărculescu, director of the high school in Kavarna. Trench excavations have been carried out on the plateau. However, the publications of 1934 and 1935 do not specify the exact locations. During the excavations, 15 stone covered graves were discovered. The finds from the surveys (stone sculpture, clay lamps, and amphora stamps) are dated to the Hellenistic, Ancient and Medieval periods<sup>20</sup>.

In 1951, the director of the Varna Museum M. Mirchev inspected the plateau and conducted trench excavations along its northern ridge, where he discovered numerous waste pits filled with black-glazed pottery, handles, and necks of amphorae, many of them stamped<sup>21</sup>. In 1952, 1953, and 1955 M. Mirchev, G. Toncheva, and D. Dimitrov from the Varna Museum undertook large-scale archaeological research in many sectors of the cape. A topographic survey of the plateau was made and a square grid plan was laid out. The excavations revealed that the materials of earlier periods (Eneolithic, Early Iron Age) originate mainly from the central part of the plateau<sup>22</sup>. In the detailed subsequent publication, the results and materials of the excavated Early Byzantine basilica, its adjacent buildings, two medieval churches, and a small medieval necropolis were published<sup>23</sup>. A general stratigraphy of the site is also presented, with the clarification that it is not valid for the entire area. It is mentioned that in 1960, specialists from the Varna Museum conducted archeological excavations of the Roman necropolis located on a southern slope on the left bank of the river, running in the low parts of the plateau<sup>24</sup>.

In 1972, the excavations were continued by V. Vasilev from the Archaeological Institute in Sofia<sup>25</sup>. He began the study of mounds and a necropolis located outside the fortress wall in the northwestern part of the promontory. His excavations continued until 1984 and more than 900 burial features and a small cemetery chapel was studied. Pits located beneath many of the burials and dating back to the Hellenistic period have been studied. Parts of the early fortress wall as well as a quadrangular tower have been uncovered. In

<sup>18</sup> SOTIROV & GATEV 2006, p. 255-257.

<sup>19</sup> VASILEV 1985; KUZMANOV & SALKIN 1981, 1992; LAZAROV 1973, 1975; TONCHEVA 1982; YORDANOV 1982; MINCHEV 1980; MIRCHEV 1958; MIRCHEV *et alii* 1962; SALKIN 1982; SHKORPIL 1934; BANEV *et alii* 1985; MADZHAROV 2022; SALKIN 1986, 2007.

<sup>20</sup> MĂRCULESCU 1934, 1935.

<sup>21</sup> MIRCHEV *et alii* 1962, p. 5.

<sup>22</sup> MIRCHEV *et alii* 1962, p. 6-7.

<sup>23</sup> MIRCHEV *et alii* 1962.

<sup>24</sup> MIRCHEV *et alii* 1962, p. 54-55.

<sup>25</sup> VASILEV *et alii* 1973, p. 58; VASILEV 1985.

the 1980s, the research of the promontory wall by V. Vasilev and A. Salkin began as well. After Vasilev's death, the research in these sectors was continued by I. Sotirov<sup>26</sup>.

In the late 1970s and 1980s, the study of a building dating back to the Hellenistic period, situated at the foot of the southern slope of the cape, began<sup>27</sup>.

In the early 1990s, to the west of the basilica, I. Sotirov and D. Toptanov studied several chained dwellings, generally dated to the period of the Second Bulgarian Kingdom<sup>28</sup>. At the same time, trench excavations to the east of the basilica revealed pits from the Hellenistic periods (oral reports by A. Salkin). Rescue excavations of a Late Antique necropolis were also carried out<sup>29</sup>.

In the early 1990s, works were carried out in the 'north-west' sector of the Late Medieval necropolis, exploration of which began in the late 1970s. Several Late Antique graves and pits, as well as Hellenistic pits have been partially studied<sup>30</sup>.

In 2003–2004, M. Tonkova, A. Salkin, and K. Land conducted trench excavations to the south of the so-called Hellenistic building at the southern foot of the cape<sup>31</sup>. In the same year, Y. Gatev partially explored a section of the second fortress wall which encloses the approach to the promontory from the harbor of the town Kavarna.<sup>32</sup>

In 2004–2005 I. Sotirov and Y. Gatev began the study of a complex of buildings to the north of the basilica. These excavations revealed that under the Medieval and the Late Antique features exists a thick layer dated to the Hellenistic period, which is not fully studied in depth yet<sup>33</sup>.

Field research in the vicinity of the settlement of Cape Chirakman was undertaken on several occasions<sup>34</sup>.

After a long break, the excavations were resumed by a team led by E. Vasileva, Y. Gatev and V. Bonev in 2016<sup>35</sup>. Extensive cleaning of a large part of the plateau was undertaken. The old square grid is restored and used in the present excavations. Two Late Medieval dwellings from the end of the 14<sup>th</sup> – early 15<sup>th</sup> century have been partially studied (dwellings 1 and 2). In both, the construction of the walls is single-faced and made out of small and medium-sized quarry stones, with clay being used for soldering. During the archaeological excavations, objects related to everyday life (spindle whorls, weights, knives, and various

---

<sup>26</sup> VASILEV 1984, p. 145; VASILEV 1985; VASILEV *et alii* 1976, p. 79-80; VASILEV *et alii* 1977, p. 135-137; VASILEV *et alii* 1978, p. 137-138; VASILEV *et alii* 1979, p. 183-184; VASILEV *et alii* 1981, p. 153-154; VASILEV *et alii* 1985, p. 248-250; VASILEV *et alii* 1986, p. 189-192; SOTIROV & GATEV 1996, p. 78; SOTIROV & GATEV 2005, p. 202-203; SOTIROV & GATEV 2006, p. 255-257.

<sup>27</sup> VASILEV *et alii* 1977, p. 135; VASILEV *et alii* 1978, p. 137-138; VASILEV *et alii* 1979, p. 183-184.

<sup>28</sup> SOTIROV & GATEV 1996, p. 78; TOPTANOV 1984.

<sup>29</sup> SOTIROV & GATEV 1996, p. 78.

<sup>30</sup> SOTIROV *et alii* 1990, p. 162-164; CHOLAKOV *et alii* 1982, p. 109.

<sup>31</sup> TONKOVA *et alii* 2004, p. 69; TONKOVA & SALKIN 2005, p. 136-137.

<sup>32</sup> SOTIROV & GATEV 2005, p. 203.

<sup>33</sup> SOTIROV & GATEV 2005, p. 202-203.

<sup>34</sup> VASILEVA *et alii* 2018 b, p. 599-601; GATEV 2007, p. 597-598; SALKIN & GEORGIEV 2004, p. 119. SALKIN *et alii*. 2004, p. 119.

<sup>35</sup> VASILEVA *et alii* 2017, p. 591-594.

tools), arrowheads, adornings, and coins were found. They date to a long time span – from the Hellenistic to the Ottoman periods.

Since 2017 the archeological excavations at Cape Chirakman are led by V. Bonev and E. Vasileva<sup>36</sup>. During this period, five more dwellings from the Late Medieval period (late 14<sup>th</sup> – early 15<sup>th</sup> century) with varying degrees of preservation were discovered and studied (some partially). All of them are dug into the ground and their walls are single-faced, made of quarry stones of different sizes. Clay is used as a solder. In two of the dwellings, severe fires that led to their destruction were recorded. Numerous objects related to the daily life of the people who inhabited them were found inside. In some of the dwellings, walls from earlier periods had been rebuilt and/or added and thus used for the construction of new ones. Several Late Medieval pits were excavated as well. They are all cylindrical in shape and embedded deep into the ancient layers. The materials from them are few. However, they contain a sufficient amount of information concerning for their dating.

To clarify the stratigraphy of the site, the work in a sector that I. Sotirov and Y. Gatev studied for two years (2004 and 2005), was resumed. Seventeen Late Medieval graves have been excavated as well. Two of them were found inside one of the excavated dwellings, and the others belong to a necropolis which is located to the north of the basilica and probably part of the necropolis studied in recent years.

In the present preliminary report are published the results of the excavations of the entirely studied Late Medieval features and selected finds from them, as well as the coins and the amphora stamps acquired during the archaeological surveys of the current team in 2016 - 2021. The rest of the artifacts are under restoration and will be published as soon as possible. The excavated graves and their anthropological analysis will be published as separate article also.

### **Late medieval features**

In the last six years, the research is focused on features that chronologically refer to the latest inhabitation of Cape Chirakman - the period from the end of the 14<sup>th</sup> to the end of the 15<sup>th</sup> century. Four dwellings from this period have been fully studied. They all have similar characteristics.

Dwelling *No 1* (**Pl. 1**) is located in the southern part of the plateau. The feature has been studied for several seasons<sup>37</sup>. It has a rectangular shape. Its walls are made of small and medium-sized quarry stones, and clay is used as a solder. The construction is unstable and single-faced. The room is probably part of a larger building with chained dwellings. The northern wall of the dwelling is 8.50 m long. The overall length of the east wall is 6.70 m, whereas the western wall is 4.20 m long. At the end of the west wall, a storage pit of vertically placed stone slabs was built. They form a square-like shape with dimensions 0.80 x 0.83 m. The thickness of the walls varies between 0.40 and 0.60 m. Inside the dwellings, several layers of destruction from the walls were removed, and a heavily burnt layer underneath was reached. It is saturated with small stones, pottery

---

<sup>36</sup> VASILEVA *et alii* 2018 a, p. 518-522; VASILEVA *et alii* 2019, p. 498-500; VASILEVA *et alii* 2020, p. 1155-1159; BONEV *et alii* 2021, p. 1055-1059.

<sup>37</sup> VASILEVA *et alii* 2017; VASILEVA *et alii* 2018 a; VASILEVA *et alii* 2019.

fragments, animal bones, shells, charcoal, clay coatings, and ash. In several places, black ash patches have been cleared, probably from support beams. On this level, several ceramic vessels that have fallen during the fire were found *in situ*. All the walls of the dwelling have only an inner face, indicating that the residential buildings from this period were half-entrenched in the earlier layers. This led to the disturbance of the Late Antique and Hellenistic layers and to the redeposition of materials from these periods in the Late Medieval dwellings. The floor level of premise No 1 is made of heavily rammed clay, which in some places, is laid on a stone base. In the western part of the room, the floor plaster was laid directly on large stone blocks, remains of ancient walls. Two grinding stones, charred wheat, as well as fragmented and whole ceramic vessels (PI. 1) were discovered on top of it *in situ*. A pit was excavated at the southern end of the room, in which a grave with inhumation was discovered. According to anthropological analysis, the buried individual was between 55 and 60 years old. However, the skeletal material gives conflicting information regarding gender. The floor plaster (heavily rammed clay with an average thickness of 0.05 cm.) was dismantled and a level of medium-sized stones closely lying next to each other in the northwestern corner of the room was reached.

Dwelling No 5 (PI. 2) is half-entrenched in the earlier layers. It has a roughly rectangular-shaped plan, east–west orientation, and well-preserved walls. Its internal dimensions are 2.48 m (E–W) × 1.63 m (N–S). The walls are made of quarry stones and roughly shaped in irregular rows. The western wall is an exception, as it is part of an ancient double-faced wall incorporated in the general layout of the feature (ca. 0.65 m thick). All other walls are single-faced, and their thickness is determined by the size of the stones that make them up. The northern wall of dwelling No 5 lies directly on a burnt layer with a light gray color (dated to the Late Antiquity). Fragments of Late Antique amphorae are visible beneath some of the stones on the ground. The western wall of dwelling No 5 is distinctive in its construction as it is double-faced and build of large stones bonded with clay. Probably these are remains of a Late Antique wall that was reused in the construction of dwelling No 5. The interior of the room was filled with stones from its destruction. In its eastern part, the interior space was reduced by a diagonal wall, probably used as a ‘refrigerator’ (storage niche). During the dismantling of the stones from it became apparent that the space was filled with dark brown soil, in which a fragment of a Late Antique amphora and one of a Late Medieval vessel were found. Its floor level was made of rammed earth. The pottery finds from the feature are highly fragmented and dated to Medieval, Late Antique and Hellenistic periods. Below its floor level, there is a partially revealed pithos, preserved *in situ*. It is associated with features from the Late Antiquity. To the north of its northern wall, a pavement of large stone blocks that was disturbed during the construction of dwelling No 5 was discovered. The excavation of the feature also uncovered several finds: a bone plate, fragments of a ceramic lamp, an amphora stamp, an Early Byzantine coin, and others. In the northwestern corner of the room, a pit (No 5) which must be related to the period of occupation in the room was excavated. The bottom of the latter disturbs earlier stone features, which according to their stratigraphic position, should be associated

with the Hellenistic period. A fishing net weight, a bead and a stone beam were found in its fill.

Dwelling *No 6* (Pl. 3) is situated in the southwestern corner of square 73 with only its southwestern corner entering from the north in square 83. The feature has been investigated for two seasons<sup>38</sup>. Its orientation is approximately N–S with a slight deviation to the west. Two of its walls are well preserved, with parts of the northern and western walls missing. The southern wall is constructed of large stone blocks, vertically embedded in the ancient layer, probably reused from earlier constructions. Clay was used as a solder. A single row is preserved – the base which lies on the soil. Preserved dimensions of the wall: length 2.13 m, width 0.23 m, height 0.33 m. From the eastern wall is preserved a row of large slab stones lying horizontally next to each other. The solder is clay. They lie on the ground, and only in some places, there is a substruction of single stones. The northern end of the wall is not preserved. The last stone from the wall is a very large block, vertically dug into the ground. Preserved dimensions of the wall: length 1.97 m, width 0.34 m, height 0.23 m. The western wall is single-faced, made out of quarry stones with clay as solder. A well-processed stone block is laid at its northern end. It protrudes slightly from the line of the wall and enters the interior of the room. There are numerous stones, some of large size, in the eastern profile of the sector, beneath the western wall of premise No 6. These are probably the remains of the eastern wall of a large Late Antique building with chained dwellings excavated in 2004<sup>39</sup>. It was probably used as a base in the construction of the western wall of the room. Preserved dimensions of the wall: length 2.30 m, width 0.15 m, height 0.30 m. The northern wall of the dwelling has been destroyed. However, five stones lying in a line with an approximate west–east direction have been uncovered on the ground. They are parallel to the southern wall of the room and are probably remnants of its northern wall. It is likely that the wall was single-faced and constructed of quarry stones with clay as solder. Two larger stones lying horizontally and penetrating deep were uncovered at the reached level. These are probably the remains of an earlier wall, on which the later one was built. Preserved dimensions of the wall: length 1.34 m, width 0.27 m, height 0.15 m. Assuming that these stones form the northern wall of dwelling No 6, its internal dimensions are as follows: 3.00 m (N–S) x 1.58 m (E–W).

Dwelling *No 7* (Pl. 3) is located to the east of dwelling No 5. The feature has been studied for two seasons<sup>40</sup>. It has a rectangular shape and NW–SE orientation. Three of its walls are preserved – the northern, eastern, and the western ones. The southern wall, if not destroyed, falls below the main profile in the sector. The room is entrenched in the ancient terrain, therefore its walls are single-sided. It is probable that some of them have been preserved from Late Antiquity and have been reused. Uncovered dimensions of the dwelling: 4.50 m (N–S) x 3.50 m (E–W). A large slab stone block was uncovered in its southern part, directly adjacent to the remaining profile. The western wall is best preserved concerning to height. It is built of medium-sized quarry stones, with the large ones in the northern part

---

<sup>38</sup> BONEV *et alii* 2021.

<sup>39</sup> SOTIROV & GATEV 2004.

<sup>40</sup> BONEV *et alii* 2021.

and the smaller ones in the southern part. The solder is clay. A tendency to arrange the blocks in rows that in places overlap for greater strength can be observed. The stones of the first row are larger in size and used as a base. The greatest height in terms of preservation is in the northern part – 1.00–1.05 m. This is visible in the studied pit No 12 which is adjacent to the inner east face of the western wall of the dwelling. The thickness of the wall could not be determined accurately as the outer face was missing from 0.40 to 1.40 m. In the northwestern corner of the exterior of the room, construction of quarry stones with an approximately rectangular shape was revealed. It appears to be a continuation of the northern and western walls and the front is formed the north and the west. Its previous function is not clear, but it is possibly a part of an earlier construction. Approximate dimensions: 1.40 m (N-S) x 1.00 m (E-W), height 0.89 m. To the west of this rectangular feature, large stone blocks were discovered *in situ*. They lie horizontally, with a step-wise position to the north. To the west, they are flanked by another linear row of stone blocks that are entrenched vertically. This is probably a remnant of an ancient construction. Pit No 12 is cylindrical in shape. From the level of detection up to 0.40–0.50 m, many stones are found in the soil, some of which lie close to each other. The filing of the pit is homogeneous – light brown, loose soil intermixed with some limestone pebbles and charcoal flecks. Up to a depth of 0.40 m, between the stones, the pottery sherds are only few and highly fragmented. Beyond this depth, the number of stones decreases, however, their size increases. More pottery sherds were found, and the size of the fragments increased. At a depth of 0.60–0.75 m from the level of detection, a layer of mussel shells was registered, which has a thickness of. 0.07–0.12 m. Below it, the amount of pottery found during the excavation decreases. The fragments are thin-walled, with glaze dated to 14<sup>th</sup>–15<sup>th</sup> centuries. Fragments of Late Antique tiles and animal bones were found as well. The northern wall of the dwelling is the one that is built more precisely. It is preserved in four rows, the first two of which are made out of very large, well stacked, and horizontally aligned quarry blocks. They lie relatively close to each other and the courses are leveled. In the southeastern corner of the room, only the block of the first course is preserved, and along the western wall, its height increases. This is due to the natural displacement of the modern terrain, which decreases towards the edge of the Cape. The stone block in the above-described corner lies on the modern surface. The blocks of the first and the second rows overlap. The height of the northern wall is the greatest (0.77 m) in the northwestern corner of premise No 7. The third row is preserved approximately to the middle of the wall. The third and the fourth rows are made out of smaller stones, most of which are flat and a larger amount of soil is observed between them. The length of the wall is 3.60 m. Its width can not be determined with precision as the wall is single-faced, and varies between 0.28–0.71 m. The method of construction of the first and the second rows allows the assumption that this is a remnant of earlier construction, probably dating to the Late Antique period, which was reused to make the northern wall of dwelling No 7. It was probably double-faced. However, its external face has been destroyed. The eastern wall is the one that is build the worst. It is preserved in three courses, with only the first course being made out of large stone blocks. The

solder is clay and the courses are irregular. The greatest preserved height is at the southern end with 0.48 m. Mainly flat stones were used with a lot of earth in between. The southern end is not uncovered, it enters under the east-west profile. Its thickness has also not been determined as it enters under the tourist path to the promontory. It is probably single-faced. The first course is located at a visibly higher level, apparently built entirely in the late medieval period. The uncovered length of the wall is 4.40 m.

### **Necropolis<sup>41</sup>**

During the regular archeological excavations conducted in 2020, 12 medieval graves with inhumation were excavated. A total of 13 individuals were identified - four children, one adolescent, four males, three females, and one adult of undetermined sex. The human bone remains, particularly those of adult individuals, are in relatively good condition. The males from the studied graves are distinguished by their very massive bones, with great length and respectively very tall stature, in contrast to the population studied and published in the 1980s<sup>42</sup> in which the majority of individuals were found to be of medium height.

The burial features are surrounded by stones, most of which are vertically driven. In one of the graves stone plates, that cover the pit are found. In others, slate stones were placed in different areas of the upper part of the skeleton. The skeletons are laid on the back, with stretched lower limbs, and the upper ones are bent at the elbow joint and placed in the abdomen. The orientation of the skeletons is E-W, with the head to the west. Bronze buttons were found in two of them, and a bronze hairpin in the other. The concentration of the features in two squares, as well as other graves studied in 2004-2005, suggests that they are part of a necropolis, which is most likely associated with a church or chapel, situated on the remains of the basilica complex situated nearby. The stratigraphic position of the excavated graves, as well as the finds from them, allow us to date the necropolis in the 14<sup>th</sup> – 15<sup>th</sup> centuries. This statement is confirmed by a radiocarbon analysis, which shows that the calibrated dates vary from 1358 to 1410.

### **Coins**

The archaeological site at Cape Chirakman is relatively well known and often mentioned in modern historical and archaeological studies, as well as in ancient literature. It was considered a small commercial polis from the Hellenistic period that increased in significance during the Roman classical age. Known for its ancient name Bizone, it surprisingly did not fall under the powerful influence of bordering Dionysopolis and was not assimilated as a satellite commercial city center. It did not remain merely an ordinary trade or warehouse post with a convenient port but certainly had its own influence as an independent center in the trade and politics of the Pontic cities. The regular mentions in the Portolan charts enabled an advantageous economic standing of the polis in the forefront

---

<sup>41</sup> The anthropological analysis is performed by Dr. Nadezhda Atanasova (Institute of Experimental Morphology, Pathology and Anthropology with Museum - Bulgarian Academy of Sciences). It will be published together with the description of the graves in the next issue of *Pontica*.

<sup>42</sup> KONDOVA *et alii* 1981; BOEV *et alii* 1982, 1989.

among the settlements that have existed on the northwestern Black Sea coast for a long time. The coins discovered during the last decade of research outlined a relatively long period with some interruptions in the intensity of revenues and several hiatuses. Bizone has suffered a series of cataclysms, military and natural, during which it lost its significance, and in some cases, even its entire population.

As for the scientific interest, respectively the material culture of Bizone expressed through some of the coins found on the territory of the settlement, one of the first pieces of research was published by I. Yordanov in a small collection of various authors dedicated to the peninsula in 1982<sup>43</sup>. I. Yordanov analyzed all of the finds discovered up to that point and stated that their total number was approximately 300. He placed them in a chronological period of approximately 2000 years and divided them into three main groups: coins from the Hellenistic, Roman, and Medieval periods. This division will be used conditionally, as modern research requires a more in-depth examination of monetary circulation. To obtain improved and more informative results because of these norms, the discovered coins will be separated into several shorter chronological periods. The one of the Roman age will be considered as Classical (Principate) and Late Antiquity. The early Byzantine period includes the end of the 5<sup>th</sup> – 6<sup>th</sup> century and the very beginning of the 7<sup>th</sup> century. The Early Middle Ages (8<sup>th</sup> – 10<sup>th</sup> century) are not well represented at Cape Chirakman. Therefore, the last intensively studied period is the Late Middle age which ended with coins of Ottoman emirs and sultans from the age of the Ottoman Empire that lasted until the middle of the 15<sup>th</sup> century. After this period, the existence of Cape Chirakman as a city center ceased and as a result, its habitation remained sporadic.

The coins that will be subject of this publication were discovered during regular archaeological excavations and originate from an area confined by the fortress wall, at the highest part of the cape, or more specifically to the north of the basilica.

Another crucial circumstance is the condition of the coins. By the morphology of the terrain, the sediment from which the cape is made up is strongly calcareous. It consists of small fossils and sediments that are in the early stages of crystallization. In most cases, this layer has a white or light grey loose feature. It has a clear basic character, mixed with amounts of sodium chloride (due to its proximity to the sea). This condition makes the environment highly hostile to metal finds. It is especially corrosive to objects made of iron, copper, and their alloys. Bronze, regardless of its composition - tin, lead or zinc impurity is strongly corroded. Due to the inability to form a patina, the reduction and corrosive processes are highly destructive to the entire surface of objects, and sometimes in-depth, to their core. Hellenistic coins suffer severely from these values, as they have remained in this environment the longest. For those reasons, most of the coins have a completely erased relief. The number of such coins is 17. A large part of the other identified coins has an approximate interpretation due to the erasure of the details on the coin field<sup>44</sup>. Despite interventions and attempts to

---

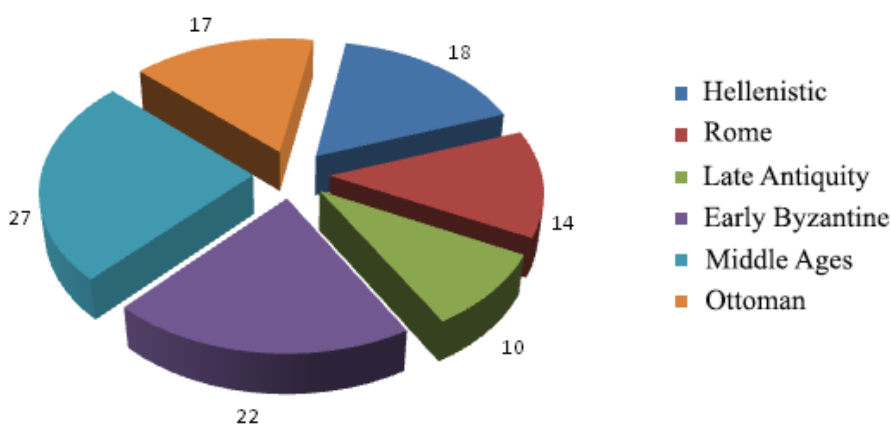
<sup>43</sup> YORDANOV 1982, p. 57-59.

<sup>44</sup> Depersonalized coins, as well as those with an uncertain date are not included in the catalogue.

stabilize and protect them, the information extracted from these portable monuments is low in comparison to other objects in the interior, or those located on the beach, but with soil with a stable Ph.

The total number of coins is 125. The number of identified coins is 108. They are divided into six chronological groups as follows: Hellenistic – 18 (PI. 4), Rome – 14 (PI. 5), Late Antique – 10 (PI. 6), Early Byzantine – 22 (PI. 7 & 7A), Middle Ages – 27 (PI. 8 & 8A), Ottoman – 17 (PI. 9). Due to this distribution, it becomes apparent that two main periods can be distinguished – Early Byzantine and Middle Ages. However, given that coin production over the centuries is not of the same intensity, a period-by-period comparison is likely to be less effective. It is therefore more reasonable to compare the quantities from the same periods with other similar settlements and geographically similar sites. Quantitatively follow the Hellenistic, Ottoman, Roman, and at least the Late Antique coins.

Distribution by historical periods



This result seems unusual for sites that have existed for a long time in present-day Bulgaria. The Late Antique period is one of the richest in empirical material, especially in the large city centers such as Serdica, Philippopolis, Nicopolis ad Istrum, where the number of coins of the 4<sup>th</sup> and 5<sup>th</sup> centuries significantly exceeds those of other periods. In comparison, the supply of coins from those centuries, in one of the nearby located to Bizone fortress, Cape Kaliakra, is similar<sup>45</sup>.

The total number of so far discovered coins from the Hellenistic period is 18. Unfortunately, a large portion of the coins is severely damaged. Most of them bear mainly the seals of the Scythian rulers – Sariak, Kanit, Akroza, and others. At this stage, no large denominations with Dioscuri and the Protome of a horse have

<sup>45</sup> At the very beginning of the 5<sup>th</sup> century, large conflicts took place in the region. The revolt of Vitelien against Anastasius I, began in 513–515. Vitelialis was a Scythian or a Goth, born in Zaldapa – Lower Moesia. One of his bases was presumably Kaliakra. Thus, it seems unexpected that there is an absence of these coins in the strata of these sea forts.

been found. Most commonly, the front part is occupied by a depiction of Apollo's head. Certainly, there are exceptions among them, which came through the usual business activity as demonstrated by the hawks of Philip II and the Diadoch Lysimachus. Several of the coins bear additional countermarks. D. Draganov dates their circulation to the 2<sup>nd</sup> – 1<sup>st</sup> century BC. The Black Sea long-range relations have also provided an autonomous coin from distant Thessaloniki with a specific symbol - a goat, on the reverse side. It dates from 187 to 31 BC (FIN 25-2017, **Pl. 4**)<sup>46</sup>. The coins of the Scythian rulers are dated to the 3<sup>th</sup> – 1<sup>st</sup> century BC, and their area of distribution is concentrated between Dionysopolis and Kaliakra, i.e. exclusively in the aquatorium of Bizone. So far, this large number of coins practically proves the assumptions made by D. Draganov who, in his study of Scythian coins, suggested that these monuments were intended more for local use in the Black Sea centers of Histria, Tomis, and Kallatis, and their concentration intensifies from north to south. Therefore, the biggest part of such coins was found in Kallatis and the smallest number in Histria<sup>47</sup>.

The coins from the Principate are the next ones in chronological order. There are 14 coins in total, and only one of them is made out of silver – antoninianus of Emperor Gordian III (238–244). The other 13 are made of bronze and copper. The predominant coins are of larger size and consist of 5 assarii produced in the mints of the local cities in Thrace and Lower Moesia. The leading city in this production is the capital of Moesia – Marcianopolis. Coins from Odessos and Deultum were discovered as well. The period is characterized by artifacts from the end of the 2<sup>nd</sup> and the beginning of the 3<sup>th</sup> century. Two of the coins were produced in Rome, and they are the oldest in the group – one sestercius of Vespasian and As of Trajan, highly used up by continuous usage. From the end of the 1<sup>st</sup> to the beginning of the 2<sup>nd</sup> century, the coins bear images of the emperors Caracalla, Elagabalus, Diadumenian, Gordian III, and Philip II the Arab. The chronologically latest coin belongs to Philip II the Arab (244–249) (FIN 17-2017, **Pl. 5**).

There are only 10 coins from the Late Antique period. These are copper numus, from the period of the Constantine dynasty, Constantine II, Constance, and Constantius II, issued after 330 AD, with a continuation by Arcadius, in the early 5<sup>th</sup> century to the middle of this century (in the time of Theodosius II). During this period, until the reform of Anastasius, the smallest denominations, the so-called minima, prevailed. We have already pointed out that this part of the coins makes up the largest part of ancient coins issued and discovered within the present-day borders of Bulgaria. Settlements of federates who do not use the optimal resource of coins are concentrated in these parts of the Eastern Roman Empire. This may help to explain their unusually small number.

During the turbulent times of early Byzantium, the economic significance of the cape seemed to increase again, as the number of coins circulating increased to 22. Furthermore, the detailed sample at hand cannot be considered representative, which is usually the case in large urban centers that are dominated by coins from the long reign of Justinian I and Justin II. In the current research, their names are

<sup>46</sup> FIN = Field inventory number.

<sup>47</sup> DRAGANOV 2015, p. 148-149.

found on merely four coins. Two post-reform coins of Anastasius were found as well. The most surprising are those from the time of Phocas (602–610), from the very beginning of the 7<sup>th</sup> century. Although some of them are severely damaged, we assume that their number reaches 9 pieces. Only one coin of his predecessor Mauricius Tiberius (582–602) was found. The tendency is for the intensive inflow of coin material to exist after the middle of the 6<sup>th</sup> century, or more specifically at the very beginning of the 7<sup>th</sup> century. In recent years, it has turned out that these dates are not so unusual. It was established that the entire Black Sea coast was conquered by the Avar–Slavic in the time of Heraclius, sometime after the first decade of the 7<sup>th</sup> century<sup>48</sup>, after which the use of coins and imported items in present-day Bulgarian lands were almost completely stopped for a long period of time<sup>49</sup>.

The coins reappeared only in the second half of the 14<sup>th</sup> century. This is probably a result of the rapid economic rise of the Dobrudzha despotate after despot Dobrotitsa assumed the throne around 1360. He moved the capital from Karvuna to Kaliakra. The period is characterized by a particular intensity, filled with many large-scale events. Some of them are the plague epidemic that broke out in the middle of the century and took the lives of a third, and in some parts, even 50% of the population, as well as the attack of the Green Count – Amedeo of Savoy, on a large part of the western Pontic Bulgarian cities in 1366. Despite these obstacles, there was advancement in both commercial and political aspects. Cape Chirakman's close proximity to Kaliakra determines its use as an alternative center and a convenient port. The study of the coin material revealed that the coast of South Dobrudzha was rarely inhabited in the 13<sup>th</sup> and the beginning of the 14<sup>th</sup> century<sup>50</sup>. On the plateau of Cape Chirakman, no coins from the 13<sup>th</sup> century were discovered. However, coins from the 14<sup>th</sup> century of the Second Bulgarian kingdom, Byzantium, Venice, Moldova, Wallachia, the Golden Horde, and Hungary were found.

The Bulgarian coins are three pieces of Tsar Ivan Alexander and Theodora with a monogram. A large number of imitations are also circulating, presumably produced in Cherven or in another settlement. Moldova is represented by three silver groschen and one copper coin, Wallachia by 4 billon small coins from the time of Mircea the Elder, dating from the end of the 14<sup>th</sup> century. Two Hungarian coins were found, one of which is a silver dinar from the attack of Vladislav Varnenchik in 1444. Venice is represented by two small copper coins, one of the Athenian Duchy of Ioan de Gravina and several coins without any indication.

The same situation roughly repeats in the capital Kaliakra, where the finds consist of singular coins most of which belong to despot Dobrotitsa and his successor Ivanko. Cape Chirakman was a full-fledged prosperous city in the Late Middle Ages, with its own significance.

Last in chronological order are the coins of the Ottoman emirs and sultans. They are represented by 17 coins. The main difference is that the predominant

---

<sup>48</sup> Similar dates were published about Serdica as well. A few years back it was considered, that the last coinage found in the vicinity of Sofia was from the time of Phocas, ALADZHOVA 2022, p. 47-49.

<sup>49</sup> PEEVSKI 2015, p. 16.

<sup>50</sup> LAZARENKO 2020, p. 271-287.

coins are the silver ones - akçe. They make up 10 pieces of the group, two of which cannot be identified as they are used up. The oldest coins are dated to the period of Bayezid Yıldırım (1389–1402). Murad II (1421–1451) is represented by two copper mangır and one akçe. Most coins are in the name of Sultan Mehmed II Fatih (1444–1481) – 5 silver coins and 3 copper ones. The coin circulation of the plateau of the cape ends with this ruler. After him, the settlement of Chirakman was probably abandoned and has not been restored to this day. Presumably, the rest of the population formed the present-day town of Kavarna.

### Hellenistic amphora stamps

During the excavations at Cape Chirakman in 2016–2021, 56 amphora stamps were found: 3 Knidian (5.36%), 13 Rhodian (23.21%), 3 Thasian (5.36%), 23 from the `Herakleian circle` (41.07%) and 14 Sinopean (25.00%).<sup>51</sup> They date from the end of the 4<sup>th</sup> century BC to the second half of the 2<sup>nd</sup> century BC. Of them 43 stamps are found in Medieval layers, 9 – into an old trench dug into the Hellenistic layers and 4 – at the base of Cape Chirakman (Sector 6), right below the Hellenistic monumental building excavated in the 1970s.

The 3 Knidian stamps from Cape Chirakman belong to a time span of almost two centuries. The earliest example is a monogram stamp with ligature ΕΠ(-) which dates to the end of the 4<sup>th</sup> – the beginning of the 3<sup>rd</sup> century BC. The latest Knidian stamp is of the eponym Τιμασικράτης<sup>52</sup> from Period VI after V. Grace, ca. 146–108 BC<sup>53</sup> and to Group VI after N. Jefremow, ca. 146–115 BC.<sup>54</sup>

The 13 Rhodian stamps from Cape Chirakman present almost 24% of all the stamps found. Of them 4 examples belong to eponyms, 5 – to fabricants and 4 could not be determined. They cover a long term from Period Ib up to Period IVa after Finkielsztejn's chronology, i.e. from ca. 270 to ca. 160 BC.<sup>55</sup> The eponym stamps are from Periods Ic (Τιμοκλῆς I, ca. 244–236 BC), IIa (Εὐκλῆς II, ca. 233–220 BC; Φιλοκράτης, ca. 233–220 BC) and IVa (Πεισίστρατος, ca. 160 BC). Some of the Rhodian amphora producers, attested at Cape Chirakman, work in more than one chronological period. The date of the stamps with names of fabricants is provided by their association with names of eponyms on one stamp, or on one amphora.<sup>56</sup> The producer stamps from Cape Chirakman date as it follows: Βοῖσκος (Period Ib, 270–265 BC); Ζήνωνος (Periods Ic-IIb, ca. 235–211 BC); Διογένης I (Period IIa, ca. 233–220 BC); Μίκυθος II (Periods IIa-IIb, ca. 233–210 BC); Δῖος I (Period IIIa-IIIe, 195–164/162 BC). The state of preservation of the rest 4 Rhodian stamps from Cape Chirakman does not allow to identify the eponyms and producers to whom they belong, but they can be dated by other features. According to the shape of the handle three of the unidentifiable stamps could be dated to the second half of the 3<sup>rd</sup> century BC.

<sup>51</sup> On the amphora stamps found at Bizone cf. MADZHAROV 2022, with literature.

<sup>52</sup> This is the latest stamp found during the excavations in 2016-2021.

<sup>53</sup> GRACE 1985, p. 31, 34.

<sup>54</sup> JEFREMOW 1995, p. 76.

<sup>55</sup> FINKIELSZTEJN 2001.

<sup>56</sup> The association of the producers with eponyms and their absolute date is after CANCARDEŞ-ŞENOL 2017, p. 187-262.

From the three Thasian stamps found at Cape Chirakman in 2016–2021 only one of the official Σκύμνος II (250s BC) could be identified. Although the name of the official is not preserved on the second stamp, it could be dated from the 260s BC to the 220s BC on the base of the lunate *sigma* in the ethnicon Θασίων.<sup>57</sup>

The stamps from the 'Herakleian circle' present 41% of all the examples found.<sup>58</sup> From 23 pieces discovered at Cape Chirakman in 2016–2021, 21 are identified and two are undeterminable. The most numerous are the stamps of Ἀριστοκράτης (9 ex.), datable from the 280s to the 220s BC. In the period from the end of the first quarter to the end of the second quarter of the 3<sup>rd</sup> century BC could be dated the stamps of Ἡρα(-) (3 ex.) and Σωκράτης (2 ex.). To the second and the third quarter of the 3<sup>rd</sup> century BC belong the stamps of Ἡρακλέοντος, Μένιππος, Μενίσκος and Νικόστρατος. The stamps of Φιλότημος (2 ex.) could be dated to the third quarter of the 3<sup>rd</sup> century BC and the stamp of Μένης – to the second half of the 3<sup>rd</sup> century BC.

From 14 Sinopean stamps discovered at Cape Chirakman in 2016–2021, 13 are identified. After the chronology of Y. Garlan they belong to groups: V B (Ἀντίμαχος II Θευπέιθου, ca. 266–261 BC; Εὐχάριστος II Δημητρίου, ca. 266–261 BC; Αἰσχίνης V Ἴφιους, ca. 258–256 BC), VI B (fabricant Διονύσιος III, stamped in the term of the astynome Απολλόδωρος III Διονυσίου, ca. ca. 248–244 BC, Απολλόδωρος III Διονυσίου, ca. 248–244 BC; Ἰκέσιος III Βακχίου – 2 ex., 243–239 BC; Μαντίθεος II Πρωταγόρου – 2 ex., ca. 243–239 BC), VI C2 (Φήμιος III Θεοπέιθου – 2 ex., ca. 227–222 BC) and VI D (Διονύσιος VI Διονυσίου τοῦ Κλειταγόρου, ca. 216–215 BC; Πόσις III Στρατονίκου, ca. 204–203 BC) and date between ca. 268 BC and ca. 217 BC.<sup>59</sup>

<sup>57</sup> cf. GARLAN 2004-2005, p. 325-327, tabl.; TZOCHEV 2016, tabl. 2.

<sup>58</sup> The centre which produces the amphorae with englyphic stamps is controversial. In the last hundred years different scholars have stated different hypotheses about the origin of these amphorae – Rhodes, Kallatis, Chersonesos, Korinth, Apollonia Pontike, but most numerous are these, sharing the opinion of their Herakleian provenance (FEDOSEEV 2016, p. 16-18, with literature). I. Zest hypothesized the existence of production centres, whose amphorae imitate the shape of the jars of Herakleia Pontike (ZEEST 1960, p. 101). S. Monahov distinguished a group of amphorae with englyphic stamps, called 'Pseudoherakleian', whose shape differs from that of the vessels of Herakleia Pontike. He attested the production of this group of amphorae to unknown yet South Pontic centre, which seals its vessels with englyphic stamps, under the strong influence of Herakleia Pontike (MONACHOV 2009). The wide spread of the stamps of Ἀριστοκράτης in Northeastern Thrace, especially in the area of Bizone (at least 164 ex.), and their scanty diffusion in the Northern Pontic area, gave grounds to N. Fedoseev to associate them with the so-called 'Herakleian circle' and to propose their West Pontic origin (FEDOSEEV 2016, p. 220-221). With the same arguments to the 'Herakleian circle' could be added some more series of englyphic stamps from the 3<sup>rd</sup> century BC with the names Γέροντος, Ἡρακλέοντος, Κράτωνος, Μένης, Μένιππος, Μενίσκος, Σένωνος, Νικόστρατος, Σωκράτης, Φιλότημος etc. The stratigraphic contexts from Satu Nou and Albești clearly prove that the stamps of Ἀριστοκράτης are synchronous to those of Γέροντος, Μένης, Μένιππος, Νικόστρατος, Σωκράτης and Φιλότημος (CONOVICI & IRIMIA 1991, p. 140-143; BUZOIANU & BĂRBULESCU 2008, p. 141-142, n. 137; CONOVICI *et alii* 2012, p. 81). In a pit at Mlada Gvardia an amphora stamped by Ἀριστοκράτης is found together with an amphora stamped by Κράτωνος (LAZAROV 1973, p. 36).

<sup>59</sup> GARLAN 2004, p. 96-98, tabl. VI.



**RHODES**

*Eponym stamps*

4. **FIN 95/2018 (Pl. 10 & 14).** Sector 88, sq. 82. Trench 1, southern extension. Handle of a Rhodian amphora with rectangular stamp:

Ἐπ' [ιεϞ]-  
 έω[ς]  
 Τιμο[κ]-  
 λε<ι>υς sic!

Eponym Τιμοκλής I. G. Finkielsztej: Period Ic, ca. 244–236 BC.<sup>66</sup>; G. Jöhrens: ca. 236 BC.<sup>67</sup> Cursive *omega*. Exact parallel: Alexandria. <sup>68</sup> Preserved height of the stamp: 1.7 cm, preserved width of the stamp: 1.9 cm. Cross-section from exterior to interior: 10YR 8/3 very pale brown (slip), 7.5YR 7/4 pink, 5YR 7/4 pink (core).

5. **FIN 26/2020 (Pl. 10 & 14).** Sector 88, sq. 83. Handle of a Rhodian amphora with rectangular stamp, sealed twice:

Ἐπὶ Εὐκλεῦς

Eponym Εὐκλής II. G. Finkielsztej: Period IIa, ca. 233–220 BC.<sup>69</sup>; G. Jöhrens: ca. 232 BC.<sup>70</sup> Height of the stamp: 1.8 cm, width of the stamp: 3.2 cm. Cross-section from exterior to interior: 10YR 7/3 very pale brown (slip), 5YR 7/4 pink.

6. **FIN 84/2018 (Pl. 10 & 14).** Sector 87, sq. 86. Handle of a Rhodian amphora with rectangular stamp:

Ἐπὶ Φιλο-  
 κράτευσ

Eponym Φιλοκράτης. G. Finkielsztej: Period IIa, ca. 233–220 BC.<sup>71</sup>; G. Jöhrens: ca. 226 BC.<sup>72</sup> Height of the stamp: 1.3 cm, width of the stamp: 2.4 cm. Cross-section from exterior to interior: 10YR 8/3 very pale brown (slip), 7.5YR 7/4 pink, 5YR 7/4 pink (core).

7. **FIN 21/2018 (Pl. 10 & 14).** Sector 88, sq. 91. Handle of a Rhodian amphora with rectangular stamp:

head of Ἐπὶ Π(ε)ισι- sic!  
 Helios στράτου

Eponym Πεισίστρατος. G. Finkielsztej: Period IVa, ca. 160 BC.<sup>73</sup>; J. Lund: ca. 165/164 BC.<sup>74</sup>; N. Badoud: ca. 160 BC.<sup>75</sup> Height of the stamp: 1.2 cm, width of the stamp: 4.3 cm. Cross-section from exterior to interior: 10YR 8/3 very pale brown (slip), 7.5YR 7/4 pink, 5YR 7/4 pink (core).

*Fabricant stamps*

8. **FIN 86/2020 (Pl. 10 & 14).** Sector 88, sq. 94. Handle of a Rhodian amphora with rectangular stamp:

<sup>66</sup> FINKIELSZTEJN 2001, p. 188, tabl. 17.

<sup>67</sup> JÖHRENS 2005, 97, Abb 10.

<sup>68</sup> CANCARDEŞ-ŞENOL 2017, p. 106, ALEX MGR 1103.29.

<sup>69</sup> FINKIELSZTEJN 2001, p. 191, tabl. 19.

<sup>70</sup> JÖHRENS 2005, p. 97, Abb. 10.

<sup>71</sup> FINKIELSZTEJN 2001, p. 191, tabl. 19.

<sup>72</sup> JÖHRENS 2005, p. 97, Abb. 10.

<sup>73</sup> FINKIELSZTEJN 2001, p. 193, tabl. 20.

<sup>74</sup> LUND 2011, p. 278, fig. 4.

<sup>75</sup> BADOUD 2015, p. 257.

## Βοΐσκου

Fabricant Βοΐσκος. Period Ib, 270–265 BC.<sup>76</sup> Height of the stamp: 1.8 cm, width of the stamp: 2.4 cm. Cross-section from exterior to interior: 10YR 8/3 very pale brown (slip), 5YR 7/4 pink.

**9. FIN 109/2019 (Pl. 10 & 14).** Sector 88, sq. 73. Handle of a Rhodian amphora with circular stamp:

centre: rose

periphery: Ζήνωνος

Fabricant Ζήνων I. Periods Ic-IIb, ca. 235–211 BC.<sup>77</sup> Diameter of the stamp: 2.8–3.0 cm. Cross-section from exterior to interior: 10YR 8/3 very pale brown (slip), 7.5YR 7/4 pink, 5YR 7/4 pink (core).

**10. FIN 82/2020 (Pl. 10 & 14).** Sector 88, sq. 84. Handle of a Rhodian amphora with rectangular stamp:

Διογένης

Διόσθου

Fabricant Διογένης I. Period IIa, ca. 233–220 BC.<sup>78</sup> Month Διόσθου (november/december).<sup>79</sup> Height of the stamp: 1.2 cm, width of the stamp: 2.7 cm. Cross-section from exterior to interior: 10YR 8/3 very pale brown (slip), 7.5YR 7/4 pink.

**11. FIN 52/2018 (Pl. 10 & 14).** Sector 88, sq. 72. Handle of a Rhodian amphora with rectangular stamp:

Μικύθου

Πανάμου

Δευτέρου

Fabricant Μικνθος II. Periods IIa-IIb, ca. 233–210 BC.<sup>80</sup> Month Πάναμος Δεύτερος (intercalary).<sup>81</sup> Height of the stamp: 1.5 cm, width of the stamp: 2.5 cm. Cross-section from exterior to interior: 10YR 8/3 very pale brown (slip), 7.5YR 7/4 pink, 5YR 7/4 pink (core).

**12. FIN 16/2020 (Pl. 10 & 14).** Sector 88, sq. 93. Handle of a Rhodian amphora with rectangular stamp:

Δίου

Fabricant Δίος I. Period IIIa-IIIe, 195–164/162 BC.<sup>82</sup> Height of the stamp: 1.6 cm, width of the stamp: 4.3 cm. Cross-section from exterior to interior: 10YR 7/3 very pale brown (slip), 7.5YR 7/4 pink.

*Unidentified stamps*

**13. FIN 96/2018 (Pl. 10 & 15).** Sector 88, sq. 82. Trench 1. Handle of a Rhodian amphora with partially preserved circular stamp:

Ἀρι[...] or Ἀμ[...]

<sup>76</sup> CANCARDEŞ-ŞENOL 2017, p. 224.

<sup>77</sup> CANCARDEŞ-ŞENOL 2017, p. 227.

<sup>78</sup> CANCARDEŞ-ŞENOL 2017, p. 225.

<sup>79</sup> BADOUD 2015, p. 16, fig.11.

<sup>80</sup> CANCARDEŞ-ŞENOL 2017, p. 231.

<sup>81</sup> BADOUD 2015, p. 19.

<sup>82</sup> CANCARDEŞ-ŞENOL 2017, p. 226.

According to the shape of the handle could be dated to the second half of the 3<sup>rd</sup> century BC.<sup>83</sup> Diameter of the stamp: 2.4-2.5 cm. Cross-section from exterior to interior: 10YR 8/3 very pale brown (slip), 7.5YR 7/4 pink.

**14. FIN 10/2019 (Pl. 10 & 15).** Sector 88, sq. 71. Handle of a Rhodian amphora with partially preserved circular stamp:

centre: rose

periphery: [...]ov

According to the shape of the handle could be dated to the last quarter of the 3<sup>rd</sup> century BC (Periods IIb-IIc).<sup>84</sup> Diameter of the stamp: ca. 2.5-2.7 cm. Cross-section from exterior to interior: 10YR 8/3 very pale brown (slip), 7.5YR 7/4 pink, 5YR 7/4 pink (core).

**15. FIN 41 2017 (Pl. 10 & 15).** Sector 6. Hellenistic building. Handle of a Rhodian amphora with part of rectangular stamp:

[.....]α

According to the shape of the handle could be dated to the second half of the 3<sup>rd</sup> century BC.<sup>85</sup> Height of the stamp: 1.5 cm; preserved width of the stamp 1.1 cm. Cross-section from exterior to interior: 10YR 8/3 very pale brown (slip), 7.5YR 7/4 pink.

**16. FIN 87/2020 (Pl. 11 & 15).** Sector 88, sq. 74. Handle of a Rhodian amphora with small part of a rectangular stamp. The inscription has been in the middle of the field of the stamp, but is not preserved. Preserved height of the stamp 0.8 cm, width of the stamp: 3.4 cm. Cross-section from exterior to interior: 10YR 8/3 very pale brown (slip), 5YR 7/4 pink.

## THASOS

**17. FIN 36/2017 (Pl. 11 & 15).** Sector 87, Sq. 94. Handle of a Thasian amphora with a stamp:

Θασίων

torch ←

Σκύμνο[ς]

Annual official Σκύμνος II. Lunate *sigma*. Y. Garlan: Group X, ca. 266–259 BC<sup>86</sup>; Ch. Tzochev 2009: Group X, Subgroup with pythos, ca. 263–259 BC<sup>87</sup>; M. Debidour: Group X, Subgroup with pythos, ca. 261–256 BC<sup>88</sup>; Ch. Tzochev 2016: Period VIII, ca. 254 BC<sup>89</sup>; A. Avram: ca. 251 BC<sup>90</sup>; Exact parallels: Thasos,<sup>91</sup> Histria,<sup>92</sup> Kallatis.<sup>93</sup> Height of the stamp: 2.4 cm, preserved width of the stamp: 3.5

<sup>83</sup> cf. LUND 2019, p. 219, fig. 2; p. 220, fig. 4.

<sup>84</sup> cf. LUND 2019, p. 219, fig. 2; p. 220, fig. 4.

<sup>85</sup> cf. LUND 2019, p. 219, fig. 2; p. 220, fig. 4.

<sup>86</sup> GARLAN 2004-2005, p. 326, tabl.

<sup>87</sup> TZOCHEV 2009, p. 66, tabl. 3.

<sup>88</sup> DEBIDOUR 2011, p. 51, tabl.

<sup>89</sup> TZOCHEV 2016, tabl. 2.

<sup>90</sup> AVRAM 1996, tabl. 1.

<sup>91</sup> BON & BON 1957, p. 385, no. 1575.

<sup>92</sup> AVRAM 1996, p. 149, no. 492, pl. XXXVII/492.

<sup>93</sup> AVRAM & POENARU BORDEA 1988, p. 31. no. 73, pl. 4/73.

cm. Cross-section from exterior to interior: 7.5YR 6/6 reddish yellow (surface), 5YR 6/6 reddish yellow, 7.5YR 6/6 reddish yellow (core).

**18. FIN 69/2018 (Pl. 11 & 15).** Sector 88, sq. 72. Two fragments of a Thasian amphora handle with a stamp:

Θ[α]σίων

ladle→↓

[.....]

Lunate *sigma*. Preserved height of the stamp: 1.7 cm, width of the stamp: 3.2 cm. Cross-section from exterior to interior: 7.5YR 6/6 reddish yellow (surface); 5YR 6/6 reddish yellow, 7.5YR 6/6 reddish yellow (core).

**19. FIN 32/2017 (Pl. 11 & 15).** Sector 87, Sq. 95. A handle of a Thasian amphora with a small part of a stamp. Preserved height of the stamp: 1.0 cm, preserved width of the stamp: 1,4 cm. Cross-section from exterior to interior: 7.5YR 6/6 reddish yellow (surface), 5YR 6/6 reddish yellow (core).

### HERAKLEIAN CIRCLE

**20. FIN 37/2017 (Pl. 11 & 15).** Sector 87, Sq. 94. Fragment of the neck of an amphora from the Herakleian circle with englyphic stamp:

Ἀρ[ισ]το -

κράτης

Fabricant Ἀριστοκράτης. V. Kac: Late fabricants group, end of the 4<sup>th</sup> century BC – end of the first quarter of the 3<sup>rd</sup> century BC<sup>94</sup>; E. Teleagă: 300–260 BC.<sup>95</sup> The stratigraphic position of the stamps with the name Ἀριστοκράτης at Satu Nou and Albești dates them from the 280s to the 220s BC.<sup>96</sup> Height of the stamp: 1.7 cm, width of the stamp: 3.2 cm. Cross-section from exterior to interior: 5YR 6/6 reddish yellow.

**21. FIN 42/2017 (Pl. 11 & 15).** Sector 6. Hellenistic building. The rim with part of the neck and part of the handle of an amphora from the Herakleian circle. On the neck there is an englyphic stamp:

Ἀρι[στο]

κρά[της]

Fabricant Ἀριστοκράτης. Height of the stamp: 1.5 cm, preserved width of the stamp: 2.0 cm. Cross-section of the handle from exterior to interior: 2.5YR 5/8 red (surface), 5YR 6/6 reddish yellow (core). Cross-section of the wall: 2.5YR 5/8 red.

**22. FIN 124/2019 (Pl. 11 & 15).** Sector 88, sq. 94. Fragment of the neck of an amphora from the Herakleian circle with englyphic stamp:

Ἀριστ[ο] -

[κράτεος]

Fabricant Ἀριστοκράτης. Height of the stamp: 1.7 cm, preserved width of the stamp: 3.0 cm. Clay: 2.5YR 6/6 light red.

**23. FIN 45/2018 (Pl. 11 & 15).** Sector 88, sq. 71. A handle of an amphora from the Herakleian circle with englyphic stamp:

<sup>94</sup> KAC 2003, p. 277; KAC 2007, p. 430, Annex 5.

<sup>95</sup> TELEAGĂ 2008, p. 95.

<sup>96</sup> CONOVICI & IRIMIA 1991, p. 140-141; BUZOIANU & BĂRBULESCU 2008, p. 140-142; CONOVICI & LUNGU 2007, p. 39.

Ἀριστο-  
κράτεος

Fabricant Ἀριστοκράτης. Preserved height of the stamp: 1.4 cm, width of the stamp: 2.9 cm. Cross-section from exterior to interior: 5YR 6/6 reddish yellow (surface), 7.5 YR 6/6 reddish yellow (core).

**24. FIN 66/2018 (Pl. 11 & 15).** Sector 88, sq. 82. Trench 1. A handle of an amphora from the Herakleian circle with englyphic stamp:

Ἀριστο-  
κράτεος

Fabricant Ἀριστοκράτης. Height of the stamp: 1.7 cm, width of the stamp: 4.1 cm. Cross-section from exterior to interior: 5YR 5/8 yellowish red (surface), 5YR 7/3 pink, 7.5YR 6/2 pinkish gray (core).

**25. FIN 148/2019 (Pl. 11 & 16).** Sector 88, sq. 72, A handle of an amphora from the Herakleian circle with englyphic stamp:

Ἀριστ[ο] -  
[κράτ[ης]

Fabricant: Ἀριστοκράτης. Height of the stamp: 1.6 cm, preserved width of the stamp: 2,4 cm. Cross-section from exterior to interior: 10YR 7/3 very pale brown (slip), 5YR 6/6 reddish yellow.

**26. FIN 67/2018 (Pl. 11 & 16).** Sector 88, sq. 82. Trench 1, southern extension. Part of the rim with part of the neck and the base of the handle of an amphora from the Herakleian circle. On the neck there is a partially sealed englyphic stamp:

Ἀριστ[ο]-  
κράτ[εος]

Fabricant Ἀριστοκράτης. Found in a context with a Rhodian stamp of the eponym Τιμοκλῆς I and a Sinopian stamp of the astynome Αἰσχίνης V Ἴφιος. Stamped twice. Height of the stamp: 1.5 cm, preserved width of the stamp: 3.1 cm. Cross-section from exterior to interior: 5YR 6/8 reddish yellow (outer surface), 7.5YR 6/6 reddish yellow, 5YR 6/8 reddish yellow (inner surface).

**27. FIN 75/2018 (Pl. 11 & 16).** Sector 88, sq. 72. A handle of an amphora from the Herakleian circle with partially sealed stamp in a rectangular frame with letters in relief:

Ἀριστ[ο]-  
[κράτεος]

Fabricant Ἀριστοκράτης. Preserved height of the stamp: 0.9 cm, preserved width of the stamp: 2.8 cm. Cross-section from exterior to interior: 7.5YR 6/6 reddish yellow (outer surface), 5YR 6/6 reddish yellow, inner surface (7.5YR 6/6 reddish yellow).

**28. FIN 68/2021 (Pl. 11 & 16).** Sector 88, sq. 84. A handle of an amphora from the Herakleian circle with partially sealed stamp in a rectangular frame with letters in relief:

[Ἀρι]σ[το]-  
κράτε[ος]

Preserved height of the stamp: 1.0 cm, preserved width of the stamp: 2.8 cm. Cross-section from exterior to interior: 10YR 7/3 very pale brown (slip), 5YR 6/6 reddish yellow (core).

**29. FIN 149/2019 (Pl. 11 & 16).** Sector 88, sq. 72. Part of the rim with part of the neck of an amphora from the Herakleian circle. On the neck there is a partially sealed englyphic stamp in a rectangular frame:

Ἡρα(-)

Fabricant Ἡρα(-). The stratigraphic position of the stamps with the name Ἡρα(-) at Satu Nou and Albești dates them from the end of the first quarter to the end of the second quarter of the 3<sup>rd</sup> century BC.<sup>97</sup> Preserved height of the stamp: 1.5 cm, width of the stamp: 3.0 cm. Cross-section from exterior to interior: 7.5YR 6/6 reddish yellow (outer surface), 7.5YR 7/2 pinkish gray, 7.5YR 6/6 reddish yellow (inner surface).

**30. FIN 38/2021 (Pl. 11 & 16).** Sector 88, sq. 72. Part of the rim with part of the neck of an amphora from the Herakleian circle. On the neck there is a partially preserved englyphic stamp:

Ἡρ[α]

Fabricant Ἡρα(-). Preserved height of the stamp: 0.5-0.9 cm, preserved width of the stamp: 1.6 cm. Clay: 5YR 6/6 reddish yellow.

**31. FIN 99/2018 (Pl. 12 & 16).** Sector 88, sq. 92. Part of the rim with part of the neck of an amphora from the Herakleian circle. On the neck there is a partially preserved englyphic stamp:

Ἡρ[α]

Fabricant Ἡρα(-). Preserved height of the stamp: 1.0 cm, width of the stamp: 3.0 cm. Cross-section from exterior to interior: 5YR 6/4 light reddish brown (outer surface), 2.5YR 6/6 light red, 5YR 6/4 light reddish brown (inner surface).

**32. FIN 94/2018 (Pl. 12 & 16).** Sector 88, sq. 82. Trench 1, southern extension. Upper part of an amphora. The rim, the neck as well as both handles are entirely preserved. Under the rim there is a stamp in a rectangular frame with letters in relief:

Ἡρακλ(έοντος)

Fabricant Ἡρακλέοντος. Found together with a Rhodian stamp of the eponym Τιμοκλῆς I and a Sinopian stamp of the astynome Αἰσχίνης V Ἴφιος. According to the context the stamp of Ἡρακλ(έοντος) should be dated from the beginning of the 250s BC to the middle of the 230s BC. Height of the stamp: 1.4 cm, width of the stamp: 4.5 cm. Cross-section: 5YR 6/6 reddish yellow.

**33. FIN 87/2019 (Pl. 12 & 16).** Sector 88, sq. 93. Fragment of the neck of an amphora from the Herakleian circle with englyphic stamp:

Μένη(ς)

Fabricant Μένης. V. Kac dates the stamps of Μένης to the end of the 4<sup>th</sup> century BC – end of the first quarter of the 3<sup>rd</sup> century BC (Late fabricants group).<sup>98</sup> This date could not be accepted. The data about the stamps with the name Μένης clearly shows that they date to the second half of the 3<sup>rd</sup> century

<sup>97</sup> STOYANOV *et alii* 2017, p. 197, with bibliography.

<sup>98</sup> KAC 2003, p. 277; KAC 2007, p. 430, Annex 5.

BC.<sup>99</sup> Exact parallels: 3 stamps from Bizone,<sup>100</sup> Kallatis,<sup>101</sup> Albești.<sup>102</sup> Height of the stamp: 0.8-1.1 cm, preserved width of the stamp: 2.8 cm. Clay: 5YR 7/6 reddish yellow.

**34. FIN 81/2020 (Pl. 12 & 16).** Sector 88, sq. 95. Part of the rim with parts of the neck and the handle of an amphora from the Herakleian circle. On the handle there is a stamp in a rectangular frame with letters in relief and in retrograde:

Μενίπ- ←

που ←

Fabricant Μένιππος. V. Kac: Late fabricants group, end of the 4<sup>th</sup> century BC – end of the first quarter of the 3<sup>rd</sup> century BC.<sup>103</sup> The stratigraphic position of the stamps with the name Μένιππος at Satu Nou dates them to the second and the third quarter of the 3<sup>rd</sup> century BC.<sup>104</sup> Exact parallels: 4 stamps from Bizone,<sup>105</sup> 2 stamps from Albești,<sup>106</sup> Kallatis, <sup>107</sup> Satu Nou.<sup>108</sup> Height of the stamp: 1.6 cm, width of the stamp: 4.3 cm. Cross-section from exterior to interior: 7.5YR 7/3 pink (slip), core (5YR 7/4 pink).

**35. FIN 63/2020 (Pl. 12 & 16).** Sector 88, sq. 73. A handle of an amphora from the Herakleian circle with partially sealed stamp with letters in relief and in retrograde:

[Με]νίσ[κου]←

Fabricant Μένισκος. Exact parallels: 2 stamps from Bizone.<sup>109</sup> Preserved height of the stamp: 1.3 cm, preserved width of the stamp: 2.2 cm. Cross-section from exterior to interior: 5YR 5/6 yellowish red (surface), 7.5YR 602 pinkish gray (core).

---

<sup>99</sup> At Albești stamp of Μένης is found together with a stamp of the Rhodian eponym Ἀγέστροτος I (BUZOIANU & BĂRBULESCU 2008, p. 141-142; CONOVICI *et alii* 2012, p. 82) dated to Period Ib (262-247 BC) (FINKIELSZTEJN 2001, p. 188, tabl. 17). N. Badoud juxtaposed the lists of the Rhodian priests of Helios with the data from the epigraphic monuments at Rhodes and the list of the Rhodian eponyms on the amphora stamps. On this ground he managed to date some of the Rhodian eponyms in an exact year. Among them is Ἀγέστροτος I, dated to 248 BC (BADOUD 2015, p. 254). Another stamp of Μένης from Albești is found in a context with a stamp of the Knidian eponym Ἀρχιππίδας (BUZOIANU & BĂRBULESCU 2008, p. 164). According to the chronology of the Knidian stamps by N. Jefremow Ἀρχιππίδας belongs to Group III (JEFREMOW 1995, p. 119-120), dated to the period 255/250-215 BC (JEFREMOW 1995, 67). At Olbia a stamp of Μένης is found in a context dated to the second half of the 3<sup>rd</sup> century BC (LAWALL *et alii* 2010, p. 382).

<sup>100</sup> MIRCHEV 1958, p. 55, no. 260, tabl. XXXIII/6 – on the neck of entirely preserved amphora; MIRCHEV *et alii* 1962, p. 41, no. 15, tabl. II/3; LAZAROV 1973, p. 37, no. 166, tabl. XVI/166; tabl. XXII/166 – on the neck of entirely preserved amphora.

<sup>101</sup> BUZOIANU 1979, p. 88, no. 23, pl. II/2.

<sup>102</sup> BUZOIANU & BĂRBULESCU 2008, p. 276, S 65-66, pl. XI/S 65.

<sup>103</sup> KAC 2003, p. 277; KAC 2007, p. 430, Annex 5.

<sup>104</sup> CONOVICI & IRIMIA 1991, p. 142.

<sup>105</sup> Unpublished.

<sup>106</sup> BUZOIANU & BĂRBULESCU 2008, p. 277, S 74-75, pl. XI/S 74-75.

<sup>107</sup> AVRAM 1988, p. 312, no. 134/fig. 12/7.

<sup>108</sup> CONOVICI & IRIMIA 1991, p. 142, no. 41, fig. 2/41.

<sup>109</sup> MIRCHEV 1958, p. 60, nos. 296-297, tabl. XXXVIII/2-3.

**36. FIN 68/2018 (Pl. 12 & 16).** Sector 88, sq. 82, Trench 1, southern extension. A fragment of the neck of an amphora from the Herakleian circle with englyphic stamp in a rectangular frame:

[N]ικοστράτου

Fabricant Νικόστρατος. V. Kac: Late fabricants group, end of the 4<sup>th</sup> century BC – end of the first quarter of the 3<sup>rd</sup> century BC.<sup>110</sup> Found together with a Rhodian stamp of the eponym Τιμοκλῆς I and a Sinopian stamp of the astynome Αἰσχίνης V Ἴφιως. According to the context the stamp of Ἡρακλ(έοντος) should be dated from the beginning of the 250s BC to the middle of the 230s BC. Lunate *sigma*. Exact parallel: 1 stamp from Bisone.<sup>111</sup> Height of the stamp: 1.1 cm, preserved width of the stamp: 5.2 cm. Cross-section from exterior to interior: 10YR 7/4 very pale brown (outer surface), 5YR 6/6 reddish yellow, 10YR 7/4 very pale brown (inner surface).

**37. FIN 40/2021 (Pl. 12 & 17).** Sector 88, sq. 72. Part of the rim with part of the neck of an amphora from the Herakleian circle. On the neck there is a partially sealed englyphic stamp in a rectangular frame with letters written in retrograde:

[C]ωκρ(άτης)←

Fabricant Σωκράτης. V. Kats: Late fabricants group, end of the 4<sup>th</sup> century BC – end of the first quarter of the 3<sup>rd</sup> century BC.<sup>112</sup> An exact parralel from Satu Nou is found in a context dated to the second quarter of the 3<sup>rd</sup> century BC.<sup>113</sup> Exact parallels: 7 stamps from Bizone,<sup>114</sup> Albești,<sup>115</sup> Satu Nou.<sup>116</sup> Height of the stamp: 1.6 cm, preserved width of the stamp: 2.6 cm. Clay: 7.5YR 7/4 pink.

**38. FIN 81/2021 (Pl. 12 & 17).** Sector 88, sq. 73. A fragment of the neck of an amphora from the Herakleian circle with englyphic stamp in a rectangular frame:

[Cω]κρά(της)

Fabricant Σωκράτης. Lunate *sigma*, cursive *omega*. Exact parallels: 2 stamps from Bizone,<sup>117</sup> Albești,<sup>118</sup> Roseți.<sup>119</sup> Height of the stamp: 1.7 cm, preserved width of the stamp: 2.9 cm. Clay: 5YR 6/6 reddish yellow.

**39. FIN 45/2020 (Pl. 12 & 17).** Sector 88, sq. 83. A fragment of the neck of an amphora from the Herakleian circle with partially preserved englyphic stamp:

[Φι]λο-  
τίμου

Fabricant Φιλότιμος. V. Kac: Late fabricants group, end of the 4<sup>th</sup> century BC – end of the first quarter of the 3<sup>rd</sup> century BC.<sup>120</sup> According to its stratigraphic position at

<sup>110</sup> KAC 2003, p. 277; KAC 2007, p. 430, Annex 5.

<sup>111</sup> MIRCHEV 1958, p. 56, no. 262, tabl. XXXIII/8.

<sup>112</sup> KAC 2003, p. 277; KAC 2007, p. 430, Annex 5.

<sup>113</sup> CONOVICI & IRIMIA 1991, p. 142.

<sup>114</sup> MIRCHEV 1958, p. 56, no 264, tabl. XXXIV/2 and six unpublished stamps, kept at HM-Kavarna.

<sup>115</sup> BUZOIANU & BĂRBULESCU 2008, p. 278, S 93, pl. XI/S 93.

<sup>116</sup> CONOVICI & IRIMIA 1991, p. 142-143, no. 48, fig. 2/48.

<sup>117</sup> MIRCHEV 1958, p. 61, no. 304, tabl. XXXIX/2 and one unpublished stamp, kept at HM-Kavarna.

<sup>118</sup> BUZOIANU & BĂRBULESCU 2008, p. 278 S 92, pl. XI/S 92.

<sup>119</sup> GLODARIU 1974, pl. XV/A85; XVII/A85 = MĂNDESCU 2010, p. 136, no. 546, pl. 242/8 – upon the neck of an entirely preserved amphora.

Satu Nou the stamps with the name Φιλότημος are dated to the third quarter of the 3<sup>rd</sup> century BC.<sup>121</sup> Exact parallels: 7 stamps from Albești,<sup>122</sup> 3 from Satu Nou,<sup>123</sup> 3 from Schitu,<sup>124</sup> 1 from Kallatis.<sup>125</sup> Preserved height of the stamp: 1.6 cm, preserved width of the stamp: 2.9 cm. Clay: 5YR 7/6 reddish yellow.

**40. FIN 46/2021 (Pl. 12 & 17).** Sector 88, sq. 72. A fragment of the neck of an amphora from the Herakleian circle with englyphic stamp:

[Φι]λο(τίμου)

Fabricant Φιλότημος. Exact parallels: 3 stamps from Albești.<sup>126</sup> Height of the stamp: 1.2 cm, preserved width of the stamp: 4.3 cm. Cross-section from exterior to interior: 5YR 6/6 reddish yellow (outer surface), 5YR 6/2 pinkish gray (core), 5YR 6/6 reddish yellow (inner surface).

**41. FIN 55/2018 (Pl. 12 & 17).** Sector 88, sq. 72. Fragment of the neck and the rim of an amphora with badly sealed englyphic stamp:

[.....]

Preserved height of the stamp: 0.6 cm, preserved width of the stamp: 2.7 cm. Cross-section from exterior to interior: 5YR 6/6 reddish yellow (outer surface), 7.5YR 6/3 light brown, 5YR 6/6 reddish yellow (core), 7.5YR 6/3 light brown, 5YR 6/6 reddish yellow (inner surface).

**42. FIN 97/2018 (Pl. 12 & 17).** Sector 88, sq. 82. Trench 1. Upper part of an amphora. The rim, the neck as well as both handles are entirely preserved. Under the rim there is a partially stamped englyphic stamp in relief:

N[...] or H[...]

Preserved height of the stamp: 0.9 cm, preserved width of the stamp: 2.1 cm. Cross-section from exterior to interior: 10YR 7/3 very pale brown (outer surface), 2.5YR 6/6 light red, 7.5YR 6/4 light brown (inner surface).

## SINOPE

**43. FIN 18/2016 (Pl. 12 & 17).** Sector 87, sq. 12. Handle of a Sinopian amphora with a partially preserved stamp:

Διον[ύσιος] head of Herakles↑→

Fabricant Διονύσιος III. Stamped in the term of the astynome Απολλόδωρος III Διονυσίου.<sup>127</sup> N. Conovici: Subroup Vb, ca. 252-250 BC.<sup>128</sup> Y. Garlan: Group VIB, ca. 248-244 BC.<sup>129</sup> Height of the stamp 3.5 cm, maximum width of the stamp 2.5 cm. Cross-section from exterior to interior: 5YR 7/3 pink (surface), 7.5 YR 6/2 pinkish gray (core).

<sup>120</sup> KAC 2003, p. 277; KAC 2007, p. 430, Annex 5.

<sup>121</sup> CONOVICI & IRIMIA 1991, p. 143.

<sup>122</sup> BUZOIANU & BĂRBULESCU 2008, p. 278, S 95-102, pl. XI/S 96-97; pl. XII/S 101-102.

<sup>123</sup> CONOVICI & IRIMIA 1991, p. 143, nos. 50-52, fig. 2/50.

<sup>124</sup> GRAMATOPOL & POENARU BORDEA 1969, p. 265, nos. 1159-1160; AVRAM 1988, p. 312, no. 138/fig. 13/3.

<sup>125</sup> ICONOMU 1968, p. 251, no. 3b, p. 252, fig. 21.

<sup>126</sup> BUZOIANU & BĂRBULESCU 2008, p. 278, S 103-105. pl. XII/S 103, 105.

<sup>127</sup> cf. GARLAN 2004, p. 191-192, nos. 358-363, pl. XLI/358-362.

<sup>128</sup> CONOVICI 1998, p. 48.

<sup>129</sup> GARLAN 2004, p. 97, tableau VI.

**44. FIN 41/2020 (Pl. 12 & 17).** Sector 88, sq. 74. Handle of a Sinopian amphora with a partially preserved stamp:

Τιμόλ[εως] [cornucopia↓]  
 ἀστυνόμ[ου]  
 Αντιμάχου

Astynome Ἀντίμαχος II Θευπεΐθου, fabricant Τιμόλεως. N. Conovici: Group IV, ca. 265 BC<sup>130</sup>; Y. Garlan: Subgroup V B, ca. 266–261 BC.<sup>131</sup> Exact parallels: Histria,<sup>132</sup> Panticapaeum.<sup>133</sup> Height of the stamp 2.1 cm, width of the stamp 4.1 cm. Cross-section from exterior to interior: 7.5YR 7/3 pink (slip), 5YR 6/4 light reddish brown, 7.5YR 6/2 pinkish gray (core).

**45. FIN 50/2020 (Pl. 12 & 17).** Sector 88, sq. 74. Handle of a Sinopian amphora with a partially preserved stamp:

ἄσ[τυνόμου]  
 Εὐχαρίστου  
 Μνήσις flower↑

Astynome Εὐχάριστος II Δημητρίου, fabricant Μνήσις. N. Conovici: Group IV, ca. 261 BC<sup>134</sup>; Y. Garlan: Subgroup V B, ca. 266–261 BC.<sup>135</sup> Height of the stamp 1.7 cm, width of the stamp 4.8 cm. Cross-section from exterior to interior: 10YR 7/3 very pale brown (slip), 7.5YR 7/3 pink, 5YR 6/2 pinkish gray, 5YR 7/2 pinkish gray (core).

**46. FIN 92/2018 (Pl. 13 & 17).** Sector 88, sq. 82. Trench 1, southern extension. Handle of a Sinopian amphora with a stamp:

ἀστυνόμο[υ]  
 Αἰσχίνου grape↓  
 του Ἴφιους  
 Δίος

Astynome Αἰσχίνης V Ἴφιους, fabricant Δίος. N. Conovici: Group IV, ca. 264 BC<sup>136</sup>; Y. Garlan: Subgroup V B, ca. 258–256 BC.<sup>137</sup> Lunate *sigma*. Exact parallels: Histria,<sup>138</sup> Sinope.<sup>139</sup> Maximum height of the stamp: 2.1 cm, maximum width of the stamp 4.3 cm. Cross-section from exterior to interior: 7,5 YR 7/3 pink (surface), 10YR 7/2 light gray (core).

**47. FIN 126/2019 (Pl. 13 & 17).** Sector 87, sq. 83. Handle of a Sinopian amphora with a partially preserved stamp:

[ἄσ]τυνόμου  
 [Ἄπο]λλοδώρου  
 [τοῦ Δι]ονυσίου

<sup>130</sup> CONOVICI 1998, p. 39.

<sup>131</sup> GARLAN 2004, p. 97, tabl. VI.

<sup>132</sup> CONOVICI 1998, p. 89, nos. 185-186, pl. XIV/185.

<sup>133</sup> PRIDIK 1917, p. 97, no. 745.

<sup>134</sup> CONOVICI 1998, p. 39.

<sup>135</sup> GARLAN 2004, p. 97, tableau VI.

<sup>136</sup> CONOVICI 1998, p. 39.

<sup>137</sup> GARLAN 2004, p. 97, tableau VI.

<sup>138</sup> CONOVICI 1998, p. 90, no. 193, pl. XIV/193.

<sup>139</sup> GARLAN 2004, p. 178, no. 301.

Astynome Ἀπολλόδωρος III Διονυσίου. N. Conovici: Subgroup Vb, ca. 252–250 BC<sup>140</sup>; Y. Garlan: Subgroup VI B, ca. 248–244 BC.<sup>141</sup> Height of the stamp: 1.7 cm, preserved width of the stamp 2.6 cm. Cross-section from exterior to interior: 10YR 7/2 light gray (slip), 5YR 7/4 pink, 2.5YR 6/2 pale red (core).

**48. FIN 83/2020 (Pl. 13 & 17).** Sector 88, sq. 94. Handle of a Sinopian amphora with a partially preserved stamp:

ἀ[στυ]νόμου  
Ἰκεσίου τοῦ proue↑→  
Βακχίου  
Θεό[δ]ωρο[ς]

Astynome Ἰκέσιος III Βακχίου, fabricant Θεόδωρος. N. Conovici: Subgroup Vb, ca. 247 BC<sup>142</sup>; Y. Garlan: Subgroup VI B, ca. 243–239 BC.<sup>143</sup> Exact parallels: Satu Nou,<sup>144</sup> Albești.<sup>145</sup> Height of the stamp 1.8 cm, width of the stamp 5.0 cm. Cross-section from exterior to interior: 10YR 7/3 very pale brown (slip), 7.5YR 7/3 pink, 5YR 7/2 pinkish gray, 5YR 7/2 pinkish gray (core).

**49. FIN 88/2020 (Pl. 13 & 18).** Sector 6. Hellenistic building. Handle of a Sinopian amphora with a partially preserved stamp:

ἀστυνομοῦν[τος]  
[Ἰκ]εσίου τοῦ  
Βα[κ]χίου  
Μνήσις [proue↑→]

Astynome Ἰκέσιος III Βακχίου, fabricant Μνήσις. N. Conovici: Subgroup Vb, ca. 247 BC.<sup>146</sup> Y. Garlan: Subgroup VI B, ca. 243–239 BC.<sup>147</sup> Exact parallels: Satu Nou,<sup>148</sup> Histria.<sup>149</sup> Height of the stamp 2.6 cm, preserved width of the stamp 5.7 cm. Cross-section from exterior to interior: 7.5YR 7/4 pink (slip), 7.5YR 6/4 light brown, 7.5YR 6/1 gray (core).

**50. FIN 73/2018 (Pl. 13 & 18).** Sector 88, sq. 82. Trench 1. Handle of a Sinopian amphora with a partially sealed stamp:

[ἀστυνόμου]  
[Μαν]τιθέου το- lion↑→  
ὑ Πρωταγόρου  
Εὐνικός

Astynome Μαντίθεος II Πρωταγόρου, fabricant Εὐνικός. N. Conovici: Subgroup Vb, ca. 243 BC<sup>150</sup>; Y. Garlan: Subgroup VI B, ca. 243–239 BC.<sup>151</sup> Similar

<sup>140</sup> CONOVICI 1998, p. 48.

<sup>141</sup> GARLAN 2004, p. 97, tabl. VI.

<sup>142</sup> CONOVICI 1998, p. 48.

<sup>143</sup> GARLAN 2004, p. 97, tabl. VI.

<sup>144</sup> CONOVICI & IRIMIA 1991, p. 147, no. 94, fig. 5/94.

<sup>145</sup> BUZOIANU & BĂRBULESCU 2008, p. 293, S 248, pl. 15/S 248.

<sup>146</sup> CONOVICI 1998, p. 48.

<sup>147</sup> GARLAN 2004, p. 97, tabl. VI.

<sup>148</sup> CONOVICI & IRIMIA 1991, p. 148, no. 97, fig. 5/97.

<sup>149</sup> CONOVICI 1998, p. 123, no. 419, pl. XXIX.

<sup>150</sup> CONOVICI 1998, p. 48.

<sup>151</sup> GARLAN 2004, p. 97, tabl. VI.

die with the same fabricant upon tile: Sinope.<sup>152</sup> Preserved height of the stamp 1.6 cm, width of the stamp 5.2 cm. Cross-section from exterior to interior: 10YR 7/3 very pale brown (traces of slip on the handle and the outer side of the wall), 7,5 YR 7/4 pink, 5YR 7/4 pink, 5YR 7/2 pinkish gray (core).

**51. FIN 25/2016 (Pl. 13 & 18).** Sector 6. Hellenistic building. Handle of a Sinopian amphora with a partially preserved stamp:

ἄσ[τυνόμου]  
Μαν[τίθεος του]  
Πρωτ[αγόρου]  
Ἡφαίσ[τιος] [lion←↑]

Astynome Μαντίθεος II Πρωταγόρου, fabricant Ἡφαίστιος. N. Conovici: Subgroup Vb, ca. 243 BC<sup>153</sup>; Y. Garlan: Subgroup VI B, ca. 243–239 BC.<sup>154</sup> Exact parallel: Sinope.<sup>155</sup> Maximum height of the stamp 2.4 cm, maximum width of the stamp 2.2 cm. Cross-section from exterior to interior: 7.5 YR 7/3 pink (surface), 10YR 7/2 light gray (core).

**52. FIN 32/2021 (Pl. 13 & 18).** Sector 88, sq. 72. Handle of a Sinopian amphora with a partially preserved stamp:

[ἄσ]τυνόμου  
[Φη]μίου  
[το]ῦ Θεοπέι- male figure,  
[θο]υ pressing grape↑

Astynome Φήμιος III Θεοπέιθου. N. Conovici: Subgroup Vc, ca. 235–229 BC<sup>156</sup>; Y. Garlan: Subgroup VI C2, ca. 227–222 BC.<sup>157</sup> Height of the stamp 2.3 cm, preserved width of the stamp 3.4 cm. Cross-section from exterior to interior: 7.5YR 8/2 pinkish white (slip), 5YR 7/6 reddish yellow, 5YR 7/2 pinkish gray (core).

**53. FIN 31/2017 (Pl. 13 & 18).** Sector 87, Sq. 96. Handle of a Sinopian amphora with a partially preserved stamp:

ἄστυνόμου  
Φημίου τοῦ  
[Θεοπέιθου]  
Δ[.....]

Astynome Φήμιος III Θεοπέιθου. N. Conovici: Subgroup Vc, ca. 235–229 BC<sup>158</sup>; Y. Garlan: Subgroup VI C2, ca. 227–222 BC.<sup>159</sup> Possible parallel: Panticapaeum.<sup>160</sup> Preserved height of the stamp 2.8 cm, preserved width of the stamp 4.8 cm. Cross-section from exterior to interior: 2.5YR 7/4 light reddish brown (slip), 7.5YR 7/3 pink.

<sup>152</sup> GARLAN 2004, p. 200, no. 397, pl. XLV/397.

<sup>153</sup> CONOVICI 1998, p. 48.

<sup>154</sup> GARLAN 2004, p. 97, tabl. VI.

<sup>155</sup> GARLAN 2004, p. 200, no. 398, pl. XLV/398.

<sup>156</sup> CONOVICI 1998, p. 49.

<sup>157</sup> GARLAN 2004, p. 98, tabl. VI.

<sup>158</sup> CONOVICI 1998, p. 49.

<sup>159</sup> GARLAN 2004, p. 98, tabl. VI.

<sup>160</sup> PRIDIK 1917, 80, no. 374 with fabricant Δημοσθένης

**54. FIN 47/2021 (Pl. 13 & 18).** Sector 88, sq. 74. Handle of a Sinopian amphora with a partially preserved stamp:

ἀ[στυνομοῦντος]  
 Διονυσίου τ[οῦ]  
 Διονυσίου τ[οῦ] lebes upon  
 [ΚΛ]ειτ[αγόρου] trepid↑  
 [Εὐκλής]

Astynome Διονυσίος VI Διονύσιου τοῦ Κλειταγόρου, fabricant Εὐκλής. N. Conovici: Subgroup Ve, ca. 210–190 BC<sup>161</sup>; Y. Garlan: Subgroup VI D, ca. 216–215 BC.<sup>162</sup> Exact parallels: Histria,<sup>163</sup> Sinope,<sup>164</sup> Mogila.<sup>165</sup> Preserved height of the stamp: 1.8 cm, preserved width of the stamp 3.8 cm. Cross-section from exterior to interior: 5YR 6/6 reddish yellow (slip), 5YR 7/6 reddish yellow, 5YR 7/2 pinkish gray, 5YR 6/2 pinkish gray (core).

**55. FIN 19/2021 (Pl. 13 & 18).** Sector 88, sq. 84. Handle of a Sinopian amphora with a partially preserved stamp:

ἀστυνομοῦν[τος]  
 [Π]ό[σ]ιος  
 τοῦ Στρατονίκου female head↑→  
 [Ε]ὐκλής

Astynome Πόσις III Στρατονίκου, fabricant Εὐκλής. N. Conovici: Subgroup Vd, ca. 213–211 BC<sup>166</sup>; Y. Garlan: Subgroup VI D, ca. 204–203 BC.<sup>167</sup> Exact parallel: Sinope.<sup>168</sup> Height of the stamp: 2.2 cm, preserved width of the stamp 4.3 cm. Cross-section from exterior to interior: 2.5YR 6/6 light red (slip), 5YR 7/4 pink, 5YR 6/2 pinkish gray, 5YR 7/2 pinkish gray (core).

**56. FIN 50/2019 (Table 13 & 18).** Sector 88, sq. 93. Handle of a Sinopian amphora with a partially preserved stamp:

[ἀσ]τυνόμου	[ἀσ]τυνόμου
[.....]ος grape↓ or branch↓	[Πόσι]ος grape↓
[.....]τιο	[τοῦ Ἀσ]τίου[υ]
[.....]	[.....]

Possible identification of the astynome: Αἰσχίνης V Ἴφιος,<sup>169</sup> Ἴφις Ζωπύρου;<sup>170</sup> Πόσις II Δαῖσκου or Πόσις IV Ἀστίου.<sup>171</sup> Preserved height of the

<sup>161</sup> CONOVICI 1998, p. 49.

<sup>162</sup> GARLAN 2004, p. 98, tabl. VI.

<sup>163</sup> CONOVICI 1998, p. 153-154, nos. 589-590, pl. XLI/589.

<sup>164</sup> GARLAN 2004, p. 226, no. 510.

<sup>165</sup> Unpublished. A chance find, from Mogila, Shumen Region, Northeastern Bulgaria, kept at Regional History Museum – Shumen. We express our gratitude to Stanimir Stoichev for the opportunity to work with the stamp.

<sup>166</sup> CONOVICI 1998, p. 49.

<sup>167</sup> GARLAN 2004, p. 98, tabl. VI.

<sup>168</sup> GARLAN 2004, p. 237, no. 557, pl. LXII/557.

<sup>169</sup> cf. CONOVICI 1998, p. 92, no. 207, pl. XV/207; BUZOIANU & BĂRBULESCU 2008, p. 289, S 203-209, pl. XIV/ 203-206, 208.

<sup>170</sup> cf. CONOVICI 1998, p. 109-110, no. 338, pl. XXIV/338.

<sup>171</sup> cf. GARLAN 2004, p. 244, nos. 601-603, pl. LXVIII/601-603.

stamp 2.1 cm, preserved width of the stamp 4.0 cm. Cross-section from exterior to interior: 5YR 7/3 pink (surface), 5YR 7/1 pinkish gray (core).

### BIBLIOGRAPHY

ALADZHOVA 2022 – D. Aladzhova, *Serdika v VI-VII vek, Parichno obrashtenie, Tezhesti, Pechati, Razkopki i prouchvaniya* 47 (2022), p. 47-49.

AVRAM 1988 – A. Avram, *Amfore și țigle ștampilate din colecția „Dr. Horia Slobozianu”*, SCIVA 39 (1988) 3, p. 287-313.

AVRAM 1996 – A. Avram, *Les timbres amphoriques, 1 Thasos*, Histria VIII, Bucarest - Paris, 1996.

AVRAM & POENARU-BORDEA 1988 – A. Avram, G. Poenaru-Bordea *Noweaux timbres amphoriques thasiens de Callatis*, Dacia N.S. 32 (1988), p. 27-36.

BADOUD 2015 – N. Badoud, *Le temps de Rhodes. Une chronologie des inscriptions de la cité fondée sur l'étude de ses institutions*, Vestigia, Beiträge zur alten Geschichte 63, München 2015.

BANEV, LAZOV & SALKIN 1985 – K. Banev, R. Lazov, A. Salkin, *Timbres amphoriques de Sinope dans le musée de la ville de Kavarna*, Deuxième symposium international „Le littoral Thrace et son rôle dans le monde ancien”, Sozopol, 4-7 Octobre 1982, (Thracia Pontica 2), 1985, p. 29-33.

BOBCHEVA 1973 – L. Bobcheva, *Arheologicheska karta na Tolbuhinski okrag*, Sofia, 1973.

BOBCHEVA & SALKIN 1973 – L. Bobcheva, A. Salkin, *Srednovekoven nekropol v s. Balgarevo*, Izvestiya na Okrazhniya istoricheski muzei i Balgarskoto istorichesko druzhestvo, Tolbuhin I, 1973, p. 173-182.

BOEV *et alii*. 1982 – P. Boev, N. Kondova, S. Cholakov, *Antropologichno prouchvane na srednovekovni nekropoli*, in: V. Vasilev, M. Velev (eds.), *Chirakman – Karvuna – Kavarna*, Sofia, 1982, p. 62-65.

BOEV *et alii*. 1989 – P. Boev, N. Kondova, S. Cholakov, *Demografska struktura, zabolyavaniya i rasova tipologiya na naselenieto na Kavarna prez kasnoto srednovekovie (po dannii ot nekropola na Chirakman)*, Izvestiya na Narodnia muzei Varna 25 (1989), p. 156-166.

BON & BON 1957 – A.-M. Bon, A. Bon (avec la collab. de Virginia Grace), *Les timbres amphoriques de Thasos*, Études Thasiennes IV, Paris, 1957.

BONEV *et alii*. 2021 – V. Bonev, E. Vasileva, K. Madzharov, Y. Dimitrova, *Antichna i srednovekovna krepost nos Chirakman*, Arheologicheski otkritiya i razkopki prez 2020 g., Sofia, 2021, p. 1055-1059.

BOSHNAKOV 2004 – K. Boshnakov, *Pseudo-Skymnos (Semos von Delos?)*, Palingenesia, Bd. 82, Stuttgart, 2004.

BUZOIANU 1979 – L. Buzoianu, *Noi ștampile pe amfore descoperite la Callatis*, Pontica 12 (1979), p. 77-95.

BUZOIANU & BĂRBULESCU 2008 – L. Buzoianu, M. Bărbulescu, *Albești. Monografie arheologică I*, Constanța, 2008.

CANCARDEȘ-ȘENOL 2015 – G. Cancardeș-Șenol, *Early Cnidian Amphora Exports to Alexandria, Egypt*, Recent Studies on the Archaeology of Anatolia. BAR International Series 2750, Oxford, 2015, p. 169-192.

CANCARDEȘ-ȘENOL 2016 – G. Cancardeș-Șenol, *Lexicon of Eponym Dies on Rhodian Amphora Stamps*, Volume 3, Eponyms L to Σ, Études Alexandrines 37, Alexandrie, 2016.

CANCARDEȘ-ȘENOL 2017 – G. Cancardeș-Șenol, *Lexicon of Eponym Dies on Rhodian Amphora Stamps*, Volume 4, Eponyms T to X, Études Alexandrines 39, Alexandrie, 2017.

CHOLAKOV *et alii*. 1982 – S. Cholakov, M. Mihaylov, M. Neykova, *Prouchvane na kasnosrednovekevniiya nekropol na nos Chirakman pri gr. Kavarna*, Arheologicheski otkritiya i razkopki prez 1981 g., Mihailovgrad, 1982, p. 109.

CHRISTOSKOV *et alii*. 1995 – L. Christoskov, D. Gergova, I. Iliev, V. Rizzo. *Thraces of Seismic Effects on Archaeological Sites in Bulgaria*, *Annali di Geofizica* 38 (1995) 5-6, p. 907-918.

CONOVICI 1998 – N. Conovici, *Les timbres amphoriques, 2, Sinope (tuiles timbrées comprises)*, *Histria VIII*, Bucarest - Paris, 1998.

CONOVICI & IRIMIA 1991 – N. Conovici, M. Irimia, *Timbres amphoriques et autres inscriptions céramiques découverts à Satu Nou (comm. d'Oltina, dép. de Constantza)*, *Dacia N.S.* 35 (1991), p. 139-175.

CONOVICI & LUNGU 2007 – N. Conovici, V. Lungu, *Timbres amphoriques du Musée Municipal de Bucarest*, *SCIVA* 58 (2007) 1-2, p. 33-54.

CONOVICI *et alii* 2012 – N. Conovici, A. Ganciu, M. Irimia, V. Zirra, *Repere cronologice pentru nivelurile de locuire getice timpurii de la Satu Nou – „Valea lui Voicu” (com. Oltina, jud. Constanța)*, *Thraco-Dacica S.N. II–III, 2010-2011* (2012), p. 139-175.

DEBIDOUR 2011 – M. Debidour, *Étudier le commerce des amphores thasiennes: quelques remarques à propos des trouvailles autour du Pont-Euxin (IV<sup>e</sup>-II<sup>e</sup> s. av. J.-C.)*, in: Ch. Tzochev, T. Stoyanov, A. Bozhkova (eds.) *Production and Trade of Amphorae in the Black Sea, II*, Sofia, 2011, p. 35-53.

DRAGANOV 2015 – D. Draganov, *The coinage of the Skythian kings in the west pontic area*, Sofia, 2015, p. 148-149.

FEDOSEEV 2016 – N. F. Fedoseev. *Keramicheskie kleima Gerakleya Pontiiskaya (Iz sobrania vostochno-krimskogo istoriko-kulturnogo myzeya-zapovednuka, vol. II)*, Kerch, 2016.

FINKIELSZTEJN 2001 – G. Finikielsztein, *Chronologie détaillée et révisée des éponymes amphoriques rhodiens, de 270 à 108 av. J.-C. environ*, *BAR International Series* 990, Oxford, 2001.

GARLAN 2004 – Y. Garlan, *Les timbres céramiques sinopéens sur amphores et sur tuiles, trouvés à Sinope. Présentation et catalogue*, Paris, 2004.

GARLAN 2004-2005 – Y. Garlan, *En visitant et revisitant les ateliers amphoriques de Thasos*, *BCH* 128-129 (2004-2005) 1, p. 269-329.

GATEV 2007 – Y. Gatev, *Terenni obhozhvaniya na teritoriyata na obshtina Kavarna prez 2006 g.* Arheologicheski otkritiya i razkopki prez 2006 g., Sofia, 2007, p. 597-598.

GERGOVA 2016 – D. Gergova, *The Southern Group of Tumuli of the Eastern Necropolis in the Sboryanovo Reserve. Greek Amphorae and a Getic Royal burial*, in: *Late Prehistory and Protohistory: Bronze Age and Iron Age. Proceedings of the XVII UISPP World Congress (1-7 September 2014, Burgos, Spain)*, Volume 9 / Sessions A3c and A16a, Oxford, 2016, p. 197-209.

GLODARIU 1974 – I. Glodariu, *Relații comerciale ale Daciei cu lumea elenistică și romană*, Cluj, 1974.

GRACE 1985 – V. Grace, *The Middle Stoa Dated by Amphora Stamps*, *Hesperia* 54 (1985) 1, p. 1-54.

GRAMATOPOL & POENARU BORDEA 1969 – M. Gramatopol, G. Poenaru Bordea, *Amphora Stamps from Callatis and South Dobrogea*, *Dacia N.S.* 13 (1969), p. 127-282.

ICONOMU 1968 – C. Iconomu, *Cercetări arheologice la Mangalia și Neptun*, *Pontice* 1 (1968), p. 235-268.

JEFREMOW 1995 – N. Jefremow, *Die Amphorenstempel des hellenistischen Knidos*, München, 1995.

JÖHRENS 2005 – G. Jöhrens, *Der Pergamon-Komplex, die rhodische Stempelchronologie und das Gründungsdatum von Tanais*, *Eurasia Antiqua* 11 (2005), p. 87-101.

KAC 2003 – V. I. Kac, *A New Chronology for the Ceramic Stamps of Herakleia Pontike*, in: P. Guldager Bilde, J.M. Højte and V.F. Stolba (eds), *The Cauldron of Ariantas, Studies Presented to A. N. Ščeglov on the Occasion of his 70-th Birthday*, Black Sea Studies 1, Aarhus, 2003, p. 261-278.

KAC 2007 – V. I. Kac, *Grecheskie keramicheskie kleyma epohi klassiki i ellinizma (opyt kompleksnogo izucheniya)* Bosporskie issledovaniya 18, Simpheropol – Kerch, 2007.

KITOV 1973 – G. Kitov, *Trakiiska mogilna grobnitsa krai Kavarna*, Rezyumeta na otcheti za razkopani obekti prez 1972 godina, Sofia, 1973, p. 37.

KITOV 1990 – G. Kitov, *Kupolnite grobnitsi na nos Kaliakra i nos Chirakman krai Kavarna*, Terra Antiqua Balcanica 6 (1990), p. 116-121.

KITOV *et alii* 1987 – G. Kitov, A. Petkov, A. Salkin, *Arheologiya i geofizika v prouchvaneto na trakiiska nadgrobna mogila krai s. Balgarevo, Tolbuhinski okrag*, Arheologicheski otkritiya i razkopki prez 1986 g., Razgrad, 1987, p. 101.

KONDOVA *et alii* 1981 – N. Kondova, P. Boev, S. Cholakov, *Antropologichno prouchvane na srednovekoven nekropol, otkrit pri krepostnata stena na nos Chirakman krai gr. Kavarna*, Interdistsiplinarni izsledvaniya 7-8 (1981), p. 123-134.

KUZMANOV & SALKIN 1981 – G. Kuzmanov, A. Salkin, *Kolektsiyata ot antichni lampi v muzeya na Kavarna*, Izvestiya na Narodniya muzei Varna 17 (32) (1981), p. 50-63.

KUZMANOV & SALKIN 1992 – G. Kuzmanov, A. Salkin, *Antichni amfori ot akvatoriyata na Chernomorskoto kraibrezhie na Yuzhna Dobrudzha*, Izvestiya na Narodniya muzey Varna 28 (43) (1992), p. 27-61.

LAWALL *et alii*. 2010 – M. Lawall, N. Lejpunskaja, P. Diatroptov, T. Samojlova. *Transport amphoras*, in: N.A. Lejpunskaja, P.G. Bilde, J.M. Højte, V.V. Krapivina, S.D. Kryžickij (eds.) *The Lower City of Olbia (Sector NGS) in the 6<sup>th</sup> Century BC to the 4<sup>th</sup> Century AD*, Vol. I (Black Sea Studies 13), Aarhus, 2010, p. 355–405.

LAZARENKO 2006 – I. Lazarenko, *Spasitelni arheologicheski razkopki na podmogilno grobno saorazhenie ot elinisticheskiya nekropol pri s. Bozhurets, obshtina Kavarna*, Arheologicheski otkritiya i razkopki prez 2005 g., Sofia, 2006, p. 223-225.

LAZARENKO 2020 – I. Lazarenko, *Nablyudeniya za monetnata tsirkulatsiya po Chernomorskoto kraiybrezhie na Yuzhna Dobrudzha prez XIII- nachaloto na XIV v., Vladetel, darzhava i tsarkva na Blakanite prez Srednovekovieto, Sbornik s dokladi ot mezhdunarodna nauchna konferentsiya, posvetena na 60-godishninata na prof. dr Plamen Pavlov*, 2020, p. 271-287.

LAZARENKO *et alii*. 2007 – I. Lazarenko, E. Mircheva, D. Dobrev, *Arheologicheski prouchvaniya na nadgrobna mogila pri s. Bozhurets, obshtina Kavarna, prez 2006 g.*, Arheologicheski otkritiya i razkopki prez 2006 g., Sofia, 2007, p. 326-329.

LAZAROV 1973 – M. Lazarov, *Antichni amfori (VI–I v. pr. n. e.) ot balgarskoto Chernomorie*, Izvestiya na Narodniya muzey Varna 9 (24) 1973, p. 3-52.

LAZAROV 1975 – M. Lazarov, *Nepublikovani antichni amfori i amforni pechati ot balgarskoto Chernomorie*, Izvestiya na Narodniya muzey Varna 11 (26), 1975, p. 128-136.

LAZAROV 1998 – M. Lazarov, *Notizen zur griechischen Kolonisation am westlichen Schwarzen Meer. Schriftquellen und archäologische Denkmäler*, in: G. Tsetschladze, (ed.), *The Greek Colonisation of the Black Sea Area. Historical Interpretation of Archaeology*, Stuttgart, 1998, p. 85-96.

LAZAROV 2000 – M. Lazarov, *Balgarskoto Chernomorie prez arhaichniya period. Sastoyanie na prouchvaniyata*, Izvestiya na Narodniya muzey Burgas 3. Studia in memoriam Ivani Galabov, 2000, p. 23-41.

LUND 2011 – J. Lund, *A New Sequence of the Eponyms Named on Rhodian Amphora Stamps in the first Half of the Second Century BC as Established through Seriation*, *Acta Archaeologica* 82 (2011), p. 271-290.

LUND 2019 – J. Lund, *The Typology of the Rhodian Amphora Handle*, in: N. Badoud, A. Marangou (éd.), *Analyse et exploitation des timbres amphoriques grecs*, Rennes, 2019, p. 217-223.

MADZHAROV 2022 – K. Madzharov, *The Rhodian import at Bizone and North-Eastern Thrace (3<sup>rd</sup> – 1<sup>st</sup> century BC)*, in: *Papers in honour of the 65th anniversary of professor Totko Stoyanov*, Sofia (in print).

MĂRCULESCU 1934 – O. Mărculescu, *Bizone – Portul Cavarna*, *Analele Dobrogei* 15 (1934), p. 145-162.

MĂRCULESCU 1935 – O. Mărculescu, *Descoperiri arheologice dobrogene*, *Analele Dobrogei* 16 (1935), p. 119-129.

MINČEV 1980 – A. Mincev, *Ein verschwundener thrakischer Schatz aus Kavarna und einige Bemerkungen über die Goldschmiedekunst Thrakiens in IV.-III. Jh. v. u. Z.*, *Pulpudeva* 4 (1980), p. 310-323.

MINCHEV 1980 – A. Minchev, *Edno izchezvalo trakiysko sakrovishte ot Kavarna*, *Izkustvo* 10 (1980), p. 15-19.

MIRCHEV 1958 – M. Mirchev, *Amfornite pečati ot muzeya vav Varna*, Sofia 1958.

MIRCHEV *et alii*. 1962 – M. Mirchev, G. Toncheva, D. Dimitrov, *Bizone – Karvuna*, *Izvestiya na Varnenskoto arheologicheskoto druzhestvo* 13 (1962), p. 21-109.

MONACHOV 2009 – S. Y. Monachov, *New Series of Amphorae from Southern Pontic Poleis, 4<sup>th</sup> – First Third of the 3<sup>rd</sup> centuries B.C.*, in: D. Kassab Tezgör, N. Inaishvili (eds.), *Production and Trade of Amphorae in the Black Sea I*, Paris, p. 23-27.

PEEVSKI 2015 – R. Peevski, *Problemi na prouchvaniyata – „Terminus post quem“ ili „priemstvenost“ v VII v., XI natsionalni studentski nauchni cheteniya – "Evropeisko kulturno-istoricheskoto nasledstvo" (17-18.X.2015 g.)*, 2015.

POROZHANOV 1989 – K. Porozhanov, *Datirovka na kamennite kotvi s otvori ot balgarskoto Chernomorie – postizheniya i problemi*, *Arheologiya* 31 (1989), p. 6-15.

POROZHANOV *et alii*. 2006 – K. Porozhanov, A. Salkin, A. Stoev, *Akustichno-geodezichno prouchvane i arheologicheskoto razuznavane v akvatoriyata na gr. Kavarna i arheologicheskoto izsledvane na skalno-izsecheno svetilishte v m. Yaylata*, *Arheologicheski otkritiya i razkopki prez 2005 g.*, Sofia, 2006, p. 248-251.

PRIDIK 1917 – E. M. Pridik, *Inventarnii katalog kleim na amfornih ruchkah i gorlyah i na cherepitsah Ermitazhnogo sobrania*, Petrograd, 1917.

SALKIN 1982 – A. Salkin, *Sledi ot Antichnostta*, in: V. Vasilev, M. Velev (eds.), *Chirakman – Karvuna – Kavarna*, Sofia, 1982, p. 29-35.

SALKIN 1984 – A. Salkin, *Kavarna i raionat prez drevnostta (II hil. pr. n. e. – IV v. ot n. e.)*, Kavarna ot drevnostta do Osвобождението, Sofia 1984, p. 44-61.

SALKIN 1986 – A. Salkin, *Evidence for the earlier foundation of Bizone colony*, *Thracia Pontica* 3 (1986), p. 251-255.

SALKIN 1987 – A. Salkin, *Podvodni arheologicheski prouchvaniya „Kavarna – 86“*, *Arheologicheski otkritiya i razkopki prez 1986 g.*, Razgrad 1987, p. 281.

SALKIN 1989 – A. Salkin, *Dva trakiiski groba ot okolnostite na Bizone*, *Izvestiya na Narodniya muzey Varna*, 25 (40), (1989), p. 9-12.

SALKIN 1996 – A. Salkin, *Podvodna arheologicheska ekspeditsiya „Kavarna-95“*, Arheologicheski otkritiya i razkopki prez 1995 g., Sofia 1996, p. 114.

SALKIN 2007 – A. Salkin, *Bizone* in: V., Grammenos, E. Petropoulos (eds.), *Ancient Greek Colonies in the Black Sea*, Volume 1, BAR International Series 1675, Oxford 2007, p. 37-50.

SALKIN & ANGELOVA 1988 – A. Salkin, H. Angelova, *Podvodni arheologicheski prouchvaniya „Kavarna – 87“*, Arheologicheski otkritiya i razkopki prez 1987 g., Blagoevgrad 1988, p. 225.

SALKIN & GEORGIEV 2004 – A. Salkin, P. Georgiev, *Podvodna arheologicheska ekspeditsiya „Kavarna – 2003“*, Arheologicheski otkritiya i razkopki prez 2003 g., Sofia, 2004, p. 119-120.

SALKIN & GEORGIEV 2006 – A. Salkin, P. Georgiev, *Podvodna arheologicheska ekspeditsiya – „Kavarna – 2005“*, Arheologicheski otkritiya i razkopki prez 2005 g., Sofia, 2006, p. 254-255.

SALKIN & ORACHEV 1989 – A. Salkin, A. Orachev, *Podvodna arheologicheska ekspeditsiya „Kavarna – 88“*, Arheologicheski otkritiya i razkopki prez 1988 g., Razgrad, 1989, p. 121; 172.

SALKIN *et alii*. 2004 – A. Salkin, P. Georgiev, D. Dobrev, *Obhodna terenma ekspeditsiya „Kavarna-Shabla 2003“*, Arheologicheski otkritiya i razkopki prez 2003 g., Sofia, 2004, p. 119.

SHKORPIL 1934 – K. Shkorpil, *Pechati varhu amfori ot Chernomorskoto kraibrezhie*, *Izvestiya na Balgarskiya arheologicheski institut* 8 (1934), p. 24-43.

SOTIROV & GATEV 1996 – I. Sotirov, Y. Gatev, *Spasitelni razkopki na kasnoantichen nekropol – Kavarna*, Arheologicheski otkritiya i razkopki prez 1995 g., Sofia, 1996, p. 78.

SOTIROV & GATEV 2005 – I. Sotirov, Y. Gatev, *Razkopki na nos Chirakman, antichniya Bizone*, Arheologicheski otkritiya i razkopki prez 2004 g., Sofia, 2005, p. 202-203.

SOTIROV & GATEV 2006 – I. Sotirov, Y. Gatev, *Razkopki na nos „Chirakman“*, *antichniya Bizone*, Arheologicheski otkritiya i razkopki prez 2005 g., Sofia, 2006, p. 255-257.

SOTIROV *et alii*. 1990 – I. Sotirov, D. Toptanov, B. Petrunova, A. Salkin, *Razkopki na nos Chirakman krai gr. Kavarna*, Arheologicheski otkritiya i razkopki prez, Kyustendil 1990, p. 162-164.

STOYANOV *et alii*. 2017 – T. Stoyanov, K. Madzharov, A. Bozhkova, *Sboryanovo, Volume IV. The Economic Relations of the Getic Capital Helis According to the Transport Amphorae. Part One. The Amphora Stamps*, Sofia, 2017.

TELEAGĂ 2008 – E. Teleagă, *Griechische Importe in den Nekropolen an der unteren Donau*, 6, Jh., *Anfang des 3. Jhs. v. Chr.*, Rahden / Westf., 2008.

THEODOSIEV 1994 – N. Theodosiev, *Thracian tumulus near the town of Kavarna, Helis 3* (1994), p. 109-122.

TODOROVA *et alii*. 2011. H. Todorova, K. Yordanov, V. Velkov, S. Torbatov, *Istoria na Dobrudzha 1*, Sofia 2011.

TONCHEVA & RAFAILOV 1980 – G. Toncheva, I. Rafailov, *Terakotite ot Bizone*, *Vekove* (1980) 2, p. 53-58.

TONCHEVA 1964 – G. Toncheva, *Potanalni pristanishta*, Varna, 1964.

TONCHEVA 1982 – G. Toncheva, *Terakotite ot Bizone*, in: V. Vasilev, M. Velev (eds.) *Chirakman – Karvuna – Kavarna*, Sofia, 1982, p. 36-39.

TONKOVA & SALKIN 2005 – M. Tonkova, A. Salkin, *Balgaro-frenski projekt za arheologicheskoto prouchvane na ostankite ot Bizone na yuzhnite terasi na nos Chirakman, Kavarna*, Arheologicheski otkritiya i razkopki prez 2004 g., Sofia, 2005, p. 136-137.

TONKOVA *et alii.* 2004 – M. Tonkova, A. Salkin, K. Land, *Balgaro-frenski proekt za arheologicheski prouchvaniya na ostankite ot Bizone na yuzhnite terasi na nos Chirakman, Kavarna*, Arheologicheski otkritiya i razkopki prez 2003 g., Sofia, 2004, p. 69.

TOPTANOV 1984 – D. Toptanov, *Kavarna i Kavarnenskiyat kraj po vremeto na Rannovizantiiskata imperiya (V-VI v.) i Parvoto balgarsko tsarstvo (VII-XI v.)*, in: V. Vasilev *et alii.* (eds.), *Kavarna ot drevnostta do osvobozhdenieto*, Sofia, 1984, p. 62-84.

TORBATOV 2002 – S. Torbatov, *Ukrepitelnata sistema na provintsiya Skitiya (kraya na III-VII v.)*, Veliko Tarnovo, 2002.

TZOCHEV 2009 – C. Tzochev, *Notes on the Thasian Amphora Stamps Chronology*, *Archaeologia Bulgarica* 13 (2009) 1, p. 55-72.

TZOCHEV 2016 – C. Tzochev, *Amphora Stamps from Thasos*, The Athenian Agora, XXXVII, Princeton - New Jersey 2016.

VASILEV 1984 – V. Vasilev, *Razkopki na nos Chirakman do Kavarna*, Arheologicheski otkritiya i razkopki prez 1983 g., Smolyan, 1984, p. 145.

VASILEV 1985 – V. Vasilev, *Chirakman*, *Vekove* 14 (1985) 3, p. 13-23.

VASILEV *et alii.* 1973 – V. Vasilev, G. Kitov, G. Kuzmanov, I. Sotirov, A. Salkin, *Prouchvania na nos „Charakman“ pri Kavarna*, XVIII Natsionalna arheologicheska konferentsiya, Sofia 1973, p. 58-59.

VASILEV *et alii.* 1976 – V. Vasilev, A. Salkin, I. Sotirov, *Razkopki pri nos „Charakman“ pri gr. Kavarna*, XXI Natsionalna arheologicheska konferentsiya, Smolyan, 1976, p. 79-80.

VASILEV *et alii.* 1977 – V. Vasilev, A. Salkin, V. Gerasimova, I. Sotirov, S. Cholakov, *Razkopki na nos Chirakman pri gr. Kavarna*, Arheologicheski otkritiya i razkopki prez 1976 g., Sofia, 1977, p. 135-137.

VASILEV *et alii.* 1978 – V. Vasilev, A. Salkin, V. Gerasimova, I. Sotirov, S. Cholakov, *Razkopki na nos Chirakman pri gr. Kavarna*, Arheologicheski otkritiya i razkopki prez 1977 g., Sofia, 1978, p. 137-138.

VASILEV *et alii.* 1979 – V. Vasilev, A. Salkin, I. Sotirov, S. Cholakov, N. Kondova, *Razkopki na Chirakman*, Arheologicheski otkritiya i razkopki prez 1978 g., Sofia, 1979, p. 183-184.

VASILEV *et alii.* 1981 – V. Vasilev, M. Mihaylov, G. Radichkov, M. Neykova, S. Cholakov, N. Kondova-Cholakova, *Razkopki na nos Chirakman pri gr. Kavarna*, Arheologicheski otkritiya i razkopki prez 1980 g., Sofia, 1981, p. 153-154.

VASILEV *et alii.* 1985 – V. Vasilev, M. Mihaylov, S. Cholakov, *Razkopki na nos Chirakman*, Arheologicheski otkritiya i razkopki prez 1984 g., Sliven, 1985, p. 248-250.

VASILEV *et alii.* 1986 – V. Vasilev, M. Mihaylov, S. Cholakov, S. Goshev, *Razkopki na nos Chirakman*, Arheologicheski otkritiya i razkopki prez 1985 g., Veliko Tarnovo 1986, p. 189-192.

VASILEVA *et alii.* 2017 – E. Vasileva, V. Bonev, K. Madzharov, Y. Gatev, *Arheologicheskoproouchvane na nos Chirakman, obshtina Kavarna*, Arheologicheski otkritiya i razkopki prez 2016 g., Sofia, 2017, p. 591-594.

VASILEVA *et alii.* 2018 a – E. Vasileva, V. Bonev, K. Madzharov, *Arheologicheskoproouchvane na nos Chirakman, obshtina Kavarna*, Arheologicheski otkritiya i razkopki prez 2017 g., Sofia, 2018, p. 518-522.

VASILEVA *et alii.* 2018 b – E. Vasileva, V. Bonev, K. Madzharov, S. Stoychev, D. Dobrev, B. Totev, *Terenni izdirvaniya v obshtina Kavarna*, Arheologicheski otkritiya i razkopki prez 2017 g., Sofia, 2018, p. 599-601.

VASILEVA *et alii*. 2019 – E. Vasileva, V. Bonev, K. Madzharov, *Arheologichsko prouchvane na antichna i srednovekovna krepost nos Chirakman, gr. Kavarna*, Arheologicheski otkritiya i razkopki prez 2018 g., Sofia, 2019, p. 498-500.

VASILEVA *et alii*. 2020 – E. Vasileva, V. Bonev, K. Madzharov, Y. Dimitrova, *Antichna i srednovekovna krepost nos Chirakman*, Arheologicheski otkritiya i razkopki prez 2019 g., Sofia, 2020, p. 1155-1159.

YORDANOV 1982 – I. Yordanov, *Moneti ot Chirakman*, in: V. Vasilev, M. Velev (eds.), *Chirakman – Karvuna – Kavarna*, Sofia, 1982, p. 56-59.

YOUROUKOVA 1977 – Y. Youroukova, *Nouvelles données sur la chronologie des rois scythes en Dobroudja*, *Thracia* 4 (1977), p. 105-121.

ZEEST 1960 – I. B. Zeest, *Keramicheskaya tara Bospora*, *MIA* 83, Moskva, 1960.

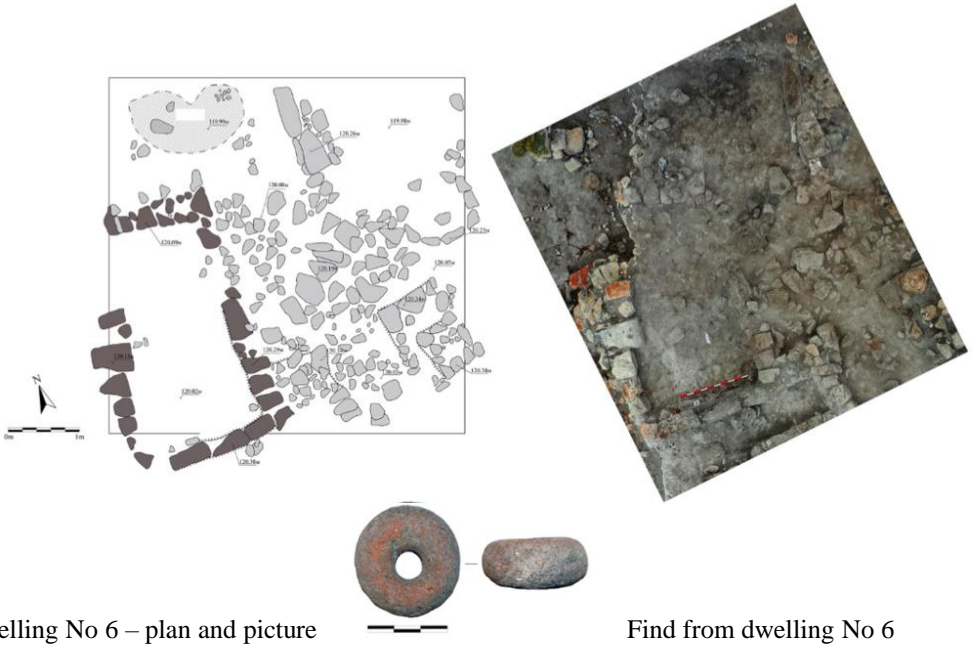


Fig. 1. Map of Dobruzha in the 12<sup>th</sup> – 1<sup>st</sup> century BC;

🏛️ - Greek colony; ● - settlement; ▲ - settlement from the Early Iron Age.







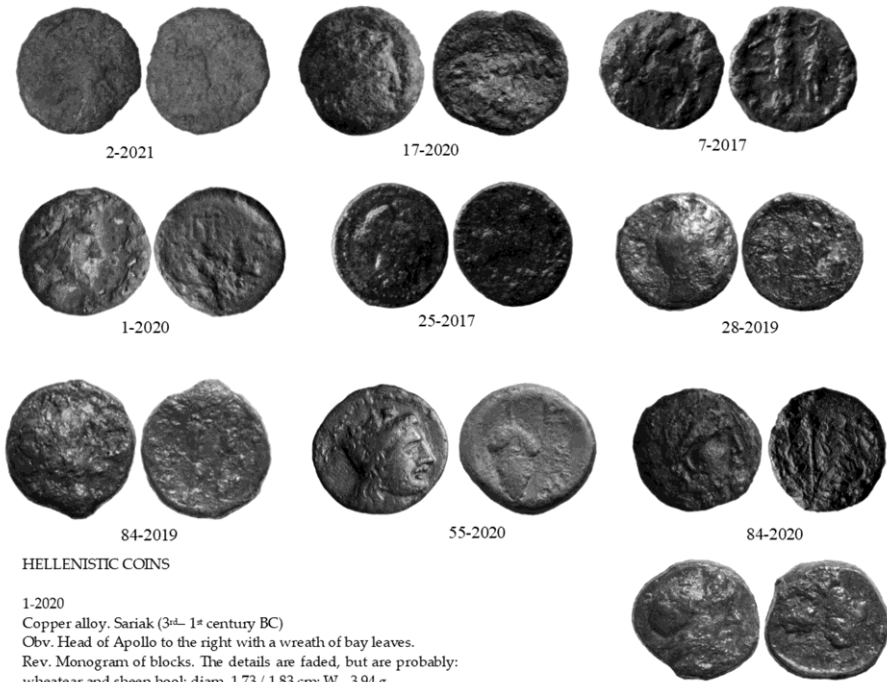
Dwelling No 6 – plan and picture

Find from dwelling No 6



Finds from dwelling No 7

Pl. 3



HELLENISTIC COINS

1-2020

Copper alloy. Sariak (3<sup>rd</sup>- 1<sup>st</sup> century BC)  
 Obv. Head of Apollo to the right with a wreath of bay leaves.  
 Rev. Monogram of blocks. The details are faded, but are probably:  
 wheatear and sheep hool; diam. 1.73 / 1.83 cm; W - 3.94 g.



104-2019

2-2021

Copper alloy. Highly faded. Probably part of the coinage of the Scythian rulers. 2<sup>nd</sup> - 1<sup>st</sup> century BC; diam. 16.2 / 17.5 mm; W - 3.04 g.  
 Rev. torch and wheat class. Monogram between them; diam. 1.92 / 2.02 cm; W - 6.07 g.

7-2017

Copper alloy. Scythian king - Sariak. 3<sup>rd</sup>- 1<sup>st</sup> century BC.  
 Obv. Head of Apollo on the right.  
 Rev. (BAEIAE) in the case- faded / Σ [APIA] (.  
 Wheat ear and curve in vertical position. Draganov 2010, 46. № 69;  
 diam. 1.6 / 1.7 cm; W - 4.3 g.

55-2020

Copper alloy AE (1<sup>st</sup> century BC - 1<sup>st</sup> century AD) Dionysopolis.  
 Obv. Dionysus - head to the right with a wreath.  
 Rev. DIO... a bunch of grapes; diam. 1.6 / 1.7 cm; W - 3.15 g.

17-2020

Copper alloy. AE (1<sup>st</sup> century BC - 1<sup>st</sup> century BC) Dionysopolis.  
 Obv. Dionysus - head to the right with a wreath.  
 Rev. DIONY. The details are faded, but probably a bunch of grapes;  
 diam. 1.6 / 1.65 cm;  
 W - 4.67 g.

84-2019

Copper alloy. Hellenism, part of the so-called group of "Scythian kings" 3<sup>rd</sup>- 1<sup>st</sup> century BC; diam. 1.65 / 1.80 cm; W - 4.04 g.

25-2017

Copper alloy. Hellenistic period. Thessaloniki-Macedonia. (187-31 BC).  
 Obv. Head to the right of young Dionysus with a wreath of ivy. in a grainy circle.  
 Rev. ..ΕΞΕΑ .. Goat to the right. The details are faded. BMC 16;  
 diam. 1.74 / 1.85 cm; W - 5.1 g.

84-2020

Copper alloy, AE. Probably Dionysopolis.  
 Obv. Dionysus - head to the right with a wreath.  
 Rev. probably sawdust and the inscription DIONY to the right of the sawdust. The inscription is illegible; 4th century BC; diam. 1.40 / 1.50 cm; W - 2.17 g.

28-2019

Copper alloy AE 21. Hellenistic - Scythian kings, Kanit.  
 Obv. Demeter's head on the right.

114-2019

Copper alloy. Hellenism. According to the marks on the obverse, the coin belongs to Kanit (210-195 BC); diam. 1.3 / 1.4 cm; W - 2.84 g.



## ROMAN COINS

17-2017

Copper alloy. Almost completely faded by burning.  
Obv. Bust to the right of the mantle.

Rev. COL... Homonoia or Zeus on the throne to the left.  
Probably an edition of Deultum. From the time of Philip II (247–249); diam. 2.05 / 2.10 cm; W - 3.8 g.

17-2018

Copper alloy. Roman Provincial, AE-24, Gordian III (238–244).  
Obv. AVT KM ANTO GORDIANOC. Head to the right with a laurel wreath.

Rev. ODHCCETION. Demeter and Persephone. They hold a torch and fruit. (Varbanov 3516); diam. 2.3 / 2.4 cm; W - 6.7 g.

24-2018

Copper alloy, AE-28, Gordian III, (238–244).

Obv. Gordian and Serapis bust each other.

Father Athena standing on a shield and inverted spear. MinW - Marcianopol. Faded details; diam. 2.7 / 2.8 cm; W - 12.9 cm.

30-2017

Copper alloy, AE26. Pentaasaria of Marcianopol. Macrinus and Diadumenian

Cut off in 217-8 L. AD. AVT K OPPE CEVH MAKPINOC, K M OPPEL ANTWNINOC DIADOMEN. Two busts facing each other. The inscription is difficult to read.

Rev. VP PONTIANOV MAPKIANOΠOΛEITΩN, Tyube right to the left, holding the helm and the horn of plenty. Is on the left in the field; diam. 2.60 / 2.72 cm; W - 11.63 g.

47-2016

Copper alloy. Provincial coinage. Pentaasarius on behalf of Elagabalus and his wife Julia Maesa (218–222).

Obv.... AVP ANTONINEINOC AVG... ..

Rev. ...IOYL ANT SELEYKOY MA .....  
Marcianopol - Julius Anthony Seleucus. Legacy consular in the city in 220-221.

Zeus is straight with his head to the left holding a pater and a scepter. Varbanov 1270; diam. 2.6 / 2.7 cm; W - 10.1 g.

67-2020

Copper alloy. Colonial copper alloy AE-26. On the reverse there is a temple with 4 columns and a goddess in the center. Probably Marcianopol. 2<sup>nd</sup> – 3<sup>rd</sup> century; diam. 2.50 / 2.70 cm; W - 7.38 g.

77-2020

Copper alloy. AE 26. 1/3 of the coin is highly corroded. Probably from the 3<sup>rd</sup> century; diam. 2.54 / 2.60 cm; W - 8.29 g.

103-2018

Copper alloy, sesterc. Highly faded due to usage. Probably Emperor Vespasian (69–79); diam. 3.38 / 3.40 cm; W - 22.5 g.

127-2019

Copper alloy. Probably an ace of Trajan or Adrian. End of 1<sup>st</sup> – beginning of 2<sup>nd</sup> century. Hole for attachment as an anulet or apotropaic near the periphery; diam. 2.75 / 2.80 cm;

W - 8.62 g.



LATE ANTIQUE COINS

16-2021

Copper alloy. Numus from the 5<sup>th</sup> century.

Obv. head to the right.

Rev. block monograms

Probably Theodosius II (425–450); diam. 7.8 / 8.2 mm; W - 0.54 g.

23-2019

Copper alloy AE- 4. Type of soldiers with standard. Issued by Constantine and his family, Constantine II, Constance and Constantius II after 330; diam. 1.30 / 1.40 cm; W - 1.55 g.

27-2017

Copper alloy, minimum from the 5<sup>th</sup> century. Probably Theodosius II.

Obv. Bust to the right.

Rev. crown around the abbreviation VOTV; diam. 1.3 / 1.2 cm; W - 1.4 g.

35-2021

Copper alloy. Numus on Arkady (383–408).

Obv. DN ARCADEVS P F AVG. Head with tiara on the right.

Rev. VIRIVS EXERCIII The emperor crowned by Victory.

MinW - Constantinople; diam. 16.7 / 17.2 mm; W - 2.28 g.

68-2020

Copper alloy. Minimum from the 5<sup>th</sup> century. A small block monogram can be seen on the reverse. Probably Marcian (450–457); diam. 0.70 / 0.90 cm; W - 0.62 g.



Pl. 7

EARLY BYZANTINE COINS

5-2020

Copper alloy. Folis of 40 numias.  
Tiberius II Constantine (578-582). MinW - Nicomedia. Year of cut 4, (581-582) SB 441; diam. 3.0 / 3.1 cm; W - 12.92 g.

11-2017

Copper alloy. Folis, 40 numi.  
Phocas (602-610).

Obv. Bust of the emperor opposite. the details are faded.  
Rev. large characters XXXX, top ANNO. Mint faded. Office B; diam. 3.05 / 3.3 cm. W - 10.7 g.

15-2020

Copper alloy. 10 Numias. Justinian I (527-565).  
Obv. Bust right with drapery.  
Rev. big I ANNO from the left NIKO below the line. MinW - Nicomedia, SB 205; diam. 1.43 / 1.54 cm; W - 3.68 g.

18-2019

Copper alloy. AE folis 10 numia. Justinian I (527-565).  
Obv. bust of the emperor with a diadem in armor and drapery on the right. The inscription is difficult to read.  
Rev. Large I. ANNO on the left, on the right XXXC (36). Below the CON line.  
Year of minting 563-564 MinW - Constantinople; diam. 1.7 / 1.9 cm; W - 4.60 gr.

21-2019

Copper alloy. Folis 40 numia (M).  
Justin II (565-578).  
Obv. Justin II and Sofia sat on thrones in fas. The inscriptions are faded.  
A. Large M, ANNO from left, cross above, X from right. Down B. Under the NIKO line.  
Year of felling 575-6. Office two.  
MinW - Nicomedia; diam. 2.89 / 2.93 cm; W - 10.91 g.

34-2019

Copper alloy. Folis ½. Justinian I (527-565).  
Obv. DN IVSTIN... Justinian I holds a globe and a shield in profile

next to his waist. With helmet and armor.

Rev. big K. ANNO from the left.  
Office of the above. III year 3 530-531; diam. 2.12 / 2.25 cm; W - 5.50 gr.

42-2020

Copper alloy. Probably early Byzantine (6<sup>th</sup> - 7<sup>th</sup> centuries). 20 numi, hexagonal cut blank Probably Phocas and Leontia (602-610). Constantinople; diam. 2.25 / 2.40 cm; W - 6.54 g.

52-2016

Copper alloy. Folis 20 numia.  
Phocas (602-610).  
Obv. Bust of the emperor opposite  
Rev. XX. Year of felling III (605-6)  
MinW - Nicomedia. Office 2; diam. 2.2 / 2.5 cm; W - 4.8 g.

69-2021

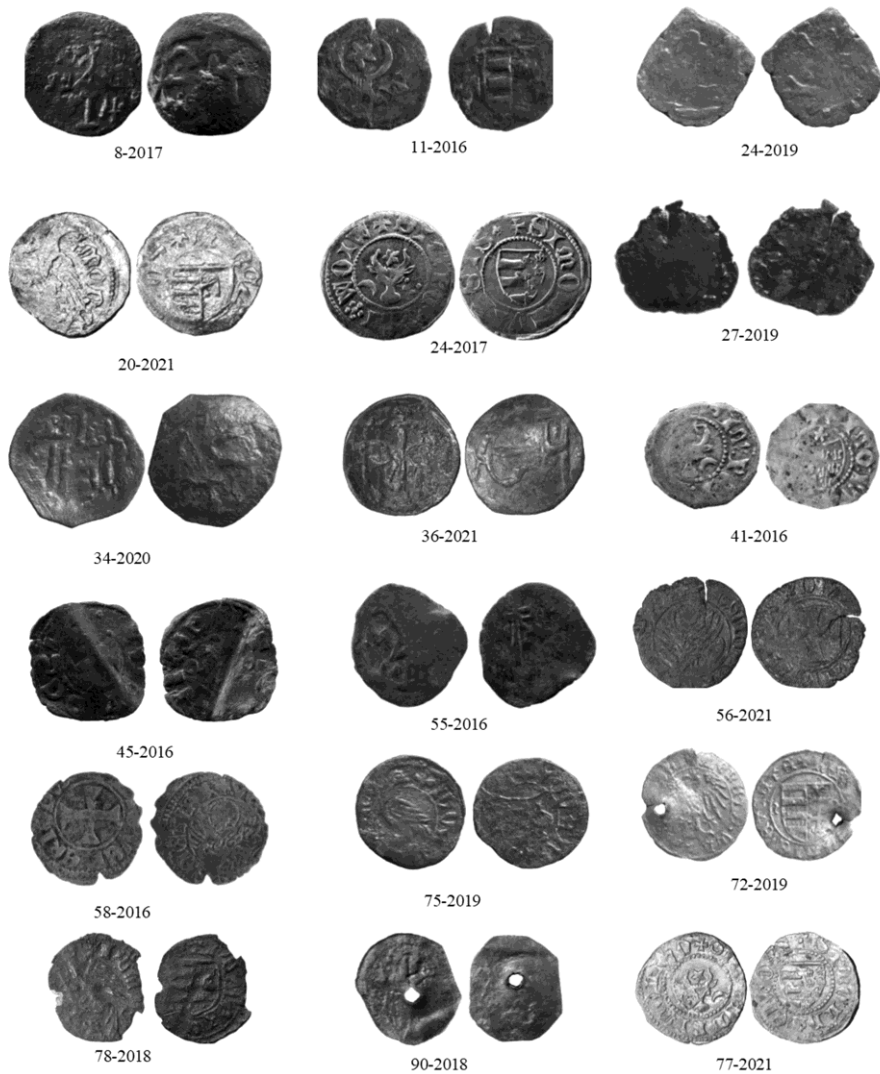
Copper alloy. Folis (40 numias) Justin II (565-578).  
Obv. The Emperor and Sofia stand on thrones.  
Rev. Big M. Year X, cut in 674-5. Office G. Mint of Theupolis - Antioch; diam. 28.2 / 29.8 mm; W - 11.72 g.

72-2021

Copper alloy. Folly of Phocas (602-610).  
Obv. Bust of the emperor opposite, with a crown map and a cross.  
Rev. large XXXX. Year II. Minted in 603-4 MinW - Constantinople. Office 5 (€); diam. 27.5 / 30.0 mm; W - 11.57 g.

92-2019

Copper alloy. Folis from 6<sup>th</sup> - 7<sup>th</sup> c. M. 40 numias of Anastasius (491-518). Office 5. MinW - Constantinople. Cut in the period 512-517; diam. 3.48 / 3.62 cm; W - 17.93 g.



MEDIEVAL COINS

8-2017

Copper alloy. Flat, Assary of Ivan Alexander (1331-1371); diam. 1.8 / 1.9 cm; W - 1.1 g.

11-2016

Silver alloy (bilon). Reduced penny of Molodova 14<sup>th</sup> century; diam. 1.5 / 1.6 cm; W - 0.75 g.

24-2019

Copper alloy. Denar of King Vladislav Vamenchuk (1386-1434); diam. 1.20 / 1.40 cm; W - 0.49 g.

20-2021

Silver. Wallachian ducat of Mircho I (1386-1418); diam. 12.2 / 11.5 mm; W - 0.19 g.

24-2017

Silver. Moldavian penny of Peter I Mushat? (1375-1391); diam. 1.8 cm; W - 0.92 g.

34-2020

Copper alloy. Stamina of Tsar Ivan Alexander (1331-1337). Imitation; diam. 1.8 / 1.9 cm; W - 1.04 g.

36-2021

Copper alloy. Imitation type: Tsar Ivan Alexander and Theodora (1341-1371); diam. 17.7 / 18.4 mm; W - 1.38 g.

41-2016

Silver. Money of Wallachia or Molodova, 14<sup>th</sup> century; diam. 1.7 / 1.8 cm; W - 0.9 g.

45-2016

Copper alloy. Athenian Duchy 13<sup>th</sup> - 14<sup>th</sup> centuries; diam. 1.8 / 2.0 cm; W - 1.0 g.

56-2021

Silver. Torneseolo of the Venetian Republic. Doge Andrea Contarini (1367-1382); diam. 15.5 / 16.0 mm; W - 0.61 g.

58-2016

Coin, silver. Torneseolo of the Venetian Republic. Doge Antonio Venier (1382-1400).

Obv.... VENERIO D.. Cross in a circle and circular inscription.

Rev.... VENETIAL +. A lion with a halo to the left, sitting in a circle with a circular inscription; diam. 1.6 / 1.7 cm; W - 0.5 g.

75-2019

Copper alloy. Probably Wallachia. Mircea I. (1386-1418); diam. 1.22 / 1.30 cm; W - 0.37 g.

72-2019

Silver. Denar of Vladislav Vamenchuk (1440-1444).

Obv. MONETA WLADISLAI DEL

Eagle with outstretched wings. Circular inscription part of it is faded.

Rev. REGIS VNGARIE ETCETE. Shield divided into two fields. Three horizontal lines on the left. On the right a double cross. Suspension hole near the periphery; diam. 1.70 / 1.74 cm; W - 0.67 g.

78-2018

Copper alloy. Wallachia. Mircho I (1355-1418); diam. 1.4 / 1.5 cm; W - 0.3 g.

90-2018

Copper alloy. Tsar Ivan Alexander and Theodora (1331-1371); diam. 1.7 / 2.0 cm; W - 1.0 g.

77-2021

Silver. Groschen from Moldova, Peter I (1375-1391); diam. 18.7 / 18.9 mm; W - 1.05 g.



## OTTOMAN COINS

2-2018

Silver, akçe. Mehmed II Fatih (1451-1481); diam. 1.02 / 1.1 cm; W - 0.8 g.

5-2018

Copper alloy, mangel. Murad II (1421-1444) (1446-1451); diam. 1.7 / 1.8 cm; W - 2.5 g.

10-2018

Silver, akçe. Bayazid Yıldırım (1389-1402); diam. 1.34 / 1.40 cm; W - 1.2 g.

14-2021

Silver, akçe. Mehmed II Fatih (1451-1481); diam. 10.1 / 10.6 mm; W - 0.97 g.

15-2021

Silver, akçe. Mehmed II (1444-1481); diam. 10.0 / 10.5 mm; W - 0.89 g.

18-2018

Silver, akçe. Bayazid Yeldaram (1389-1402); diam. 1.3 / 1.4 cm; W - 1.2 g.

19-2019

Silver, akçe. Murad II (1421-1451). Serres Mint; diam. 1.30 / 1.36 cm; W - 0.89 g.

23-2021

Silver, akçe. Mehmed II (1451-1481). Edime; diam. 10.9 / 11.3 mm; W - 0.87 gr.

42-2016

Silver, akçe. Mehmed II (1444-1481); diam. 1.0 / 1.1 cm; W - 0.8 g.

44-2021

Silver, akçe. Mehmed II Fatih (1451-1481); diam. 10.5 / 11.0 mm; W - 0.90 g.

63-2016

Copper alloy, mangel. Mehmed II (1444-1481); diam. 1.35 / 1.40 cm; W - 1.9 g.

73-2016

Silver, akçe. Mehmed II (1444-1481); diam. 1.1 cm; W - 0.9 g.

63-2016

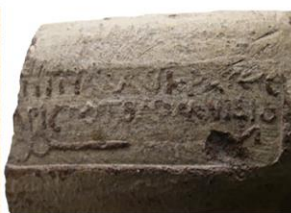
Copper alloy, mangel. Mehmed II (1444-1481); diam. 1.35 / 1.40 cm; W - 1.9 g.

73-2016

Silver, akçe. Mehmed II (1444-1481); diam. 1.1 cm; W - 0.9 g.



1. FIN 22/2016



2. FIN 20/2019



3. FIN 74/2018



4. FIN 95/2018



5. FIN 26/2020



6. FIN 84/2018



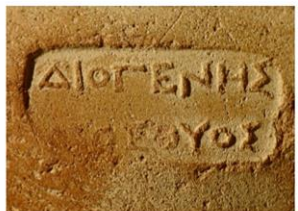
7. FIN 21/2018



8. FIN 86/2020



9. FIN 109/2019



10. FIN 82/2020



11. FIN 52/2018



12. FIN 16/2020



13. FIN 96/2018



14. FIN 10/2019



15. FIN 41/2017



16. FIN 87/2020



17. FIN 36/2017



18. FIN 69/2018



19. FIN 32/2017



20. FIN 37/2017



21. FIN 42/2017



22. FIN 124/2019



23. FIN 45/2018



24. FIN 66/2018



25. FIN 148/2019



26. FIN 67/2018



27. FIN 75/2018



28. FIN 68/2021



29. FIN 149/2019



30. FIN 38/2021



31. FIN 99/2018



32. FIN 94/2018



33. FIN 87/2019



34. FIN 81/2020



35. FIN 63/2020



36. FIN 68/2018



37. FIN 40/2021



38. FIN 81/2021



39. FIN 45/2020



40. FIN 46/2021



41. FIN 55/2018



42. FIN 97/2018



43. FIN 18/2016



44. FIN 41/2020



45. FIN 50/2020



46. FIN 92/2018



47. FIN 126/2019



48. FIN 83/2020



49. FIN 88/2020



50. FIN 73/2018



51. FIN 25/2016



52. FIN 32/2021



53. FIN 31/2017



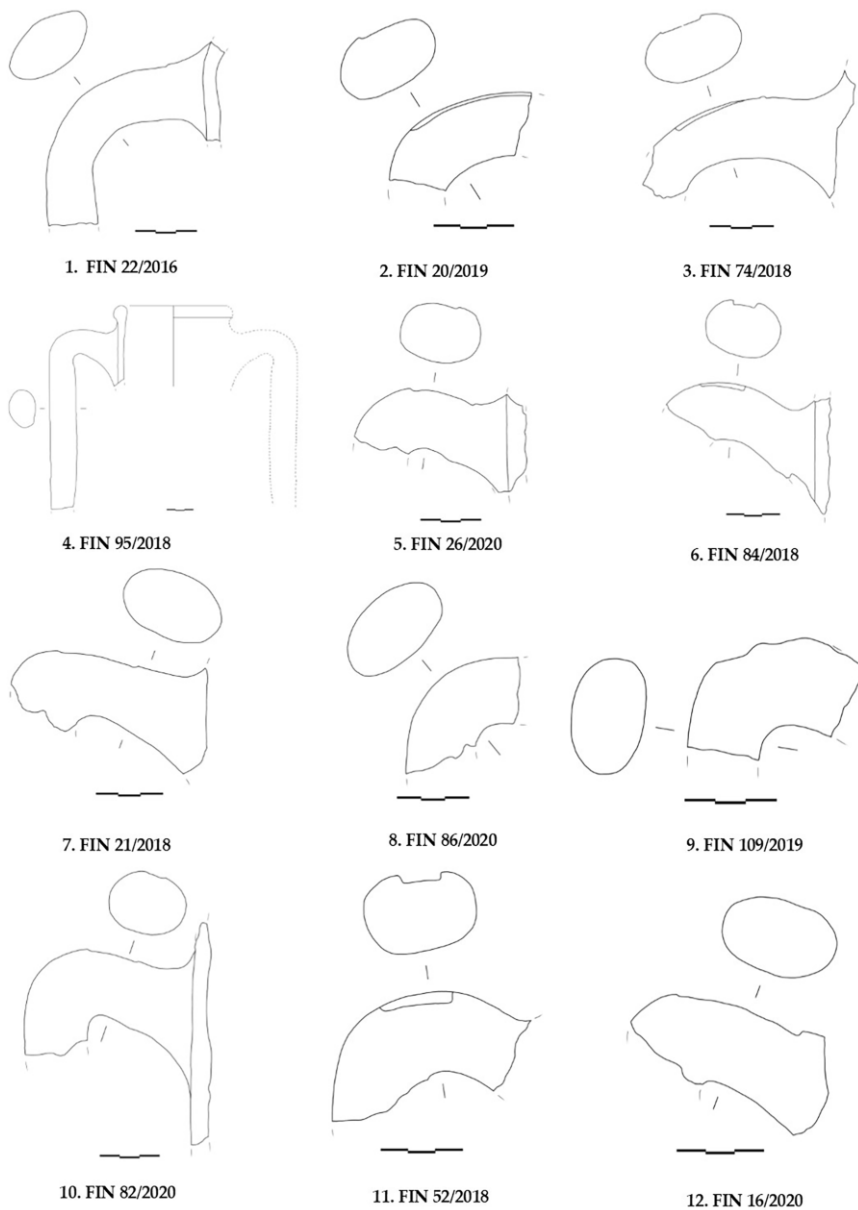
54. FIN 47/2021



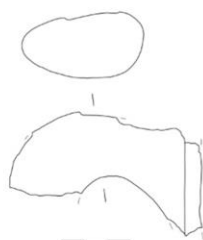
55. FIN 19/2021



56. FIN 50/2019



Pl. 14



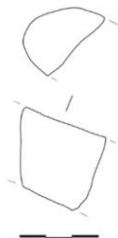
13. FIN 96/2018



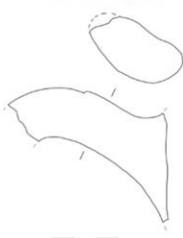
14. FIN 10/2019



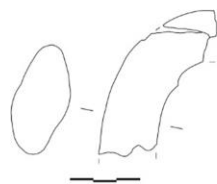
15. FIN 41/2017



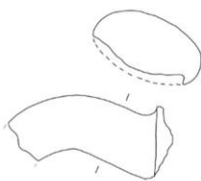
16. FIN 87/2020



17. FIN 36/2017



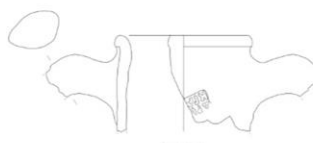
18. FIN 69/2018



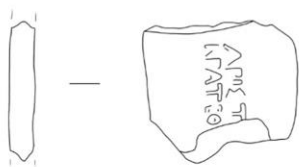
19. FIN 32/2017



20. FIN 37/2017



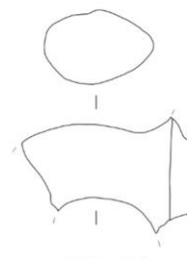
21. FIN 42/2017



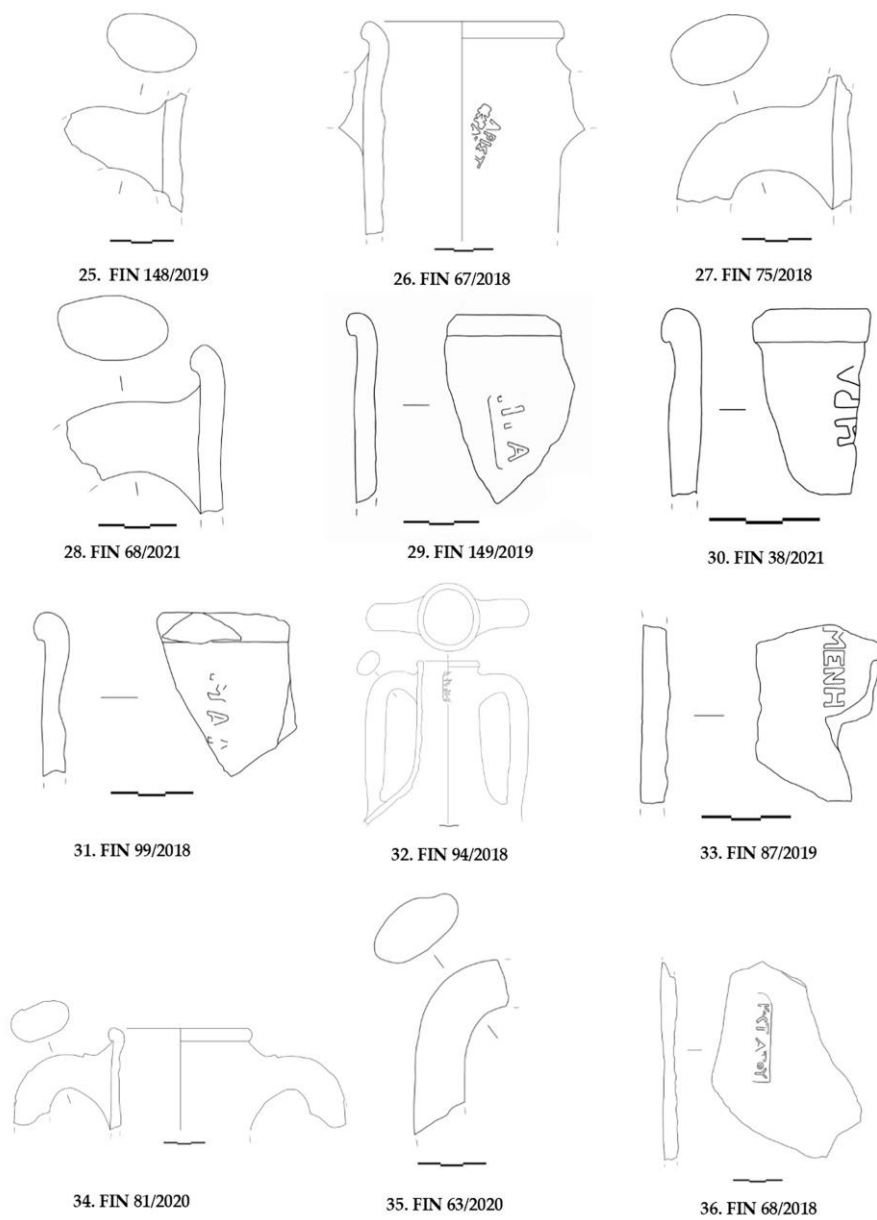
22. FIN 124/2019



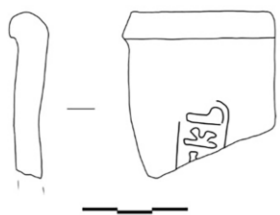
23. FIN 45/2018



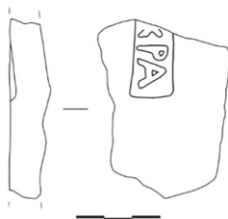
24. FIN 66/2018



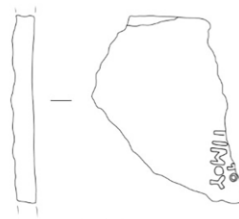
Pl. 16



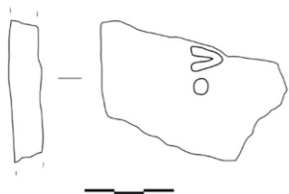
37. FIN 40/2021



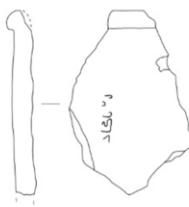
38. FIN 81/2021



39. FIN 45/2020



40. FIN 46/2021



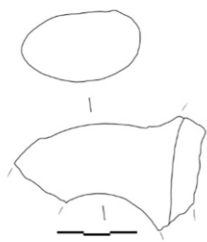
41. FIN 55/2018



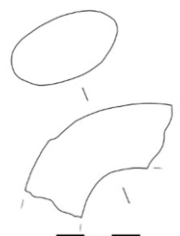
42. FIN 97/2018



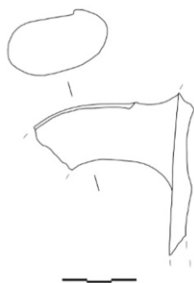
43. FIN 18/2016



44. FIN 41/2020



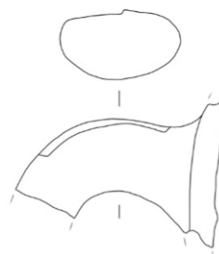
45. FIN 50/2020



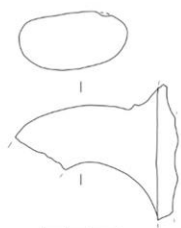
46. FIN 92/2018



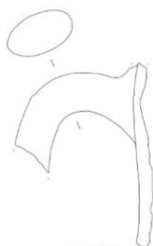
47. FIN 126/2019



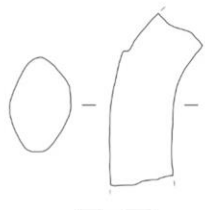
48. FIN 83/2020



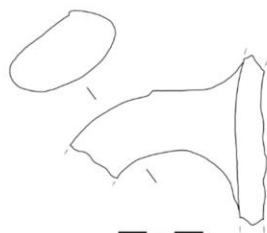
49. FIN 88/2020



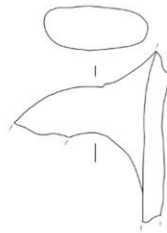
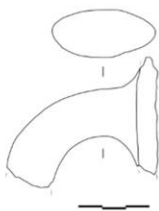
50. FIN 73/2018



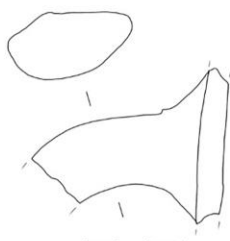
51. FIN 25/2016



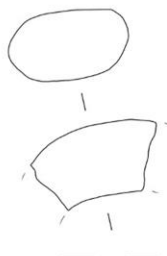
52. FIN 32/2021



54. FIN 47/2021



55. FIN 19/2021



56. FIN 50/2019